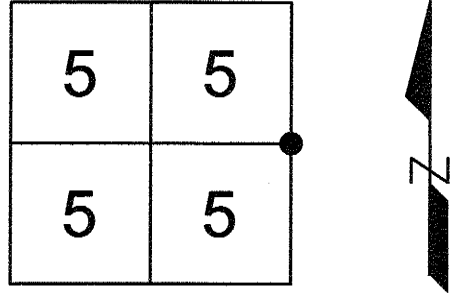


U.S. PUBLIC LAND SURVEY MONUMENT RECORD MONROE COUNTY, WISCONSIN.

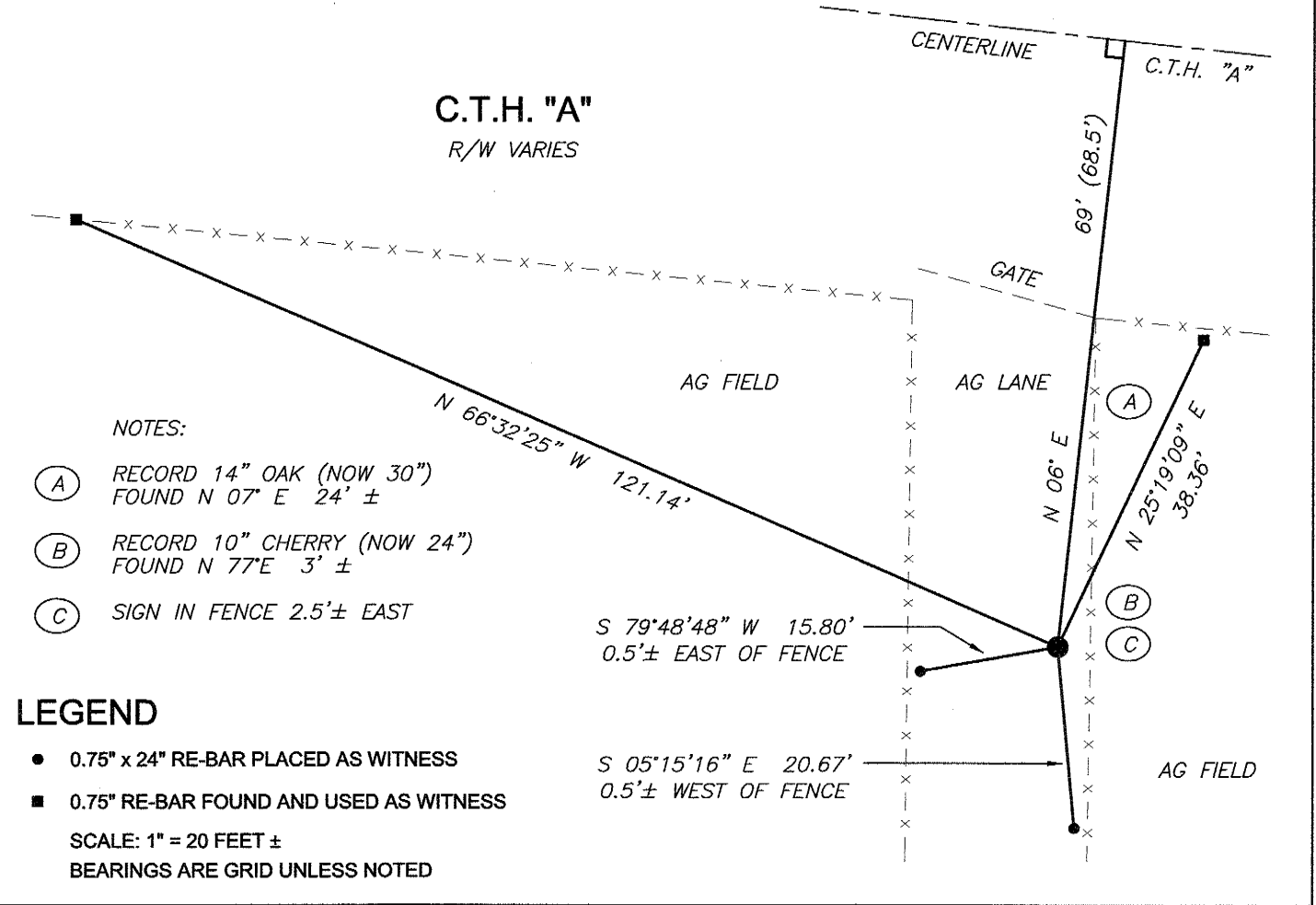
IN ACCORDANCE WITH WISCONSIN ADMINISTRATIVE CODE, CHAPTER A-E 7.08 (3) (A) - (I)

LOCATION: (A) THE IDENTITY OF THE CORNER, AS REFERENCED TO THE U.S. PUBLIC LAND SURVEY SYSTEM.

SECTION 5 - TOWN 16 N - RANGE 1 W
 TOWNSHIP OF WILTON
 TYPE OF CORNER EAST 1/4 CORNER
 TYPE OF MONUMENT HARRISON STANDARD CAST-IRON - EXISTING
 HORIZONTAL DATUM N/A
 NORTHING / LATITUDE N/A
 EASTING / LONGITUDE N/A
 VERTICAL DATUM N/A
 ELEVATION N/A



PLAN VIEW: (C) REFERENCE TO AT LEAST 4 WITNESS MONUMENTS. WITNESS MONUMENTS SHALL BE CONCRETE, OTHER THAN BEARING TREES; (D) A PLAN VIEW DEPICTING THE RELEVANT MONUMENTS AND REFERENCE TIES WHICH ARE SUFFICIENT IN DETAIL TO ENABLE ACCURATE RELOCATION OF THE CORNER MONUMENT IF THE CORNER MONUMENT IS DISTURBED; (E) A DESCRIPTION OF ANY MATERIAL DISCREPANCY BETWEEN THE LOCATION OF THE CORNER AS RESTORED OR REESTABLISHED AND THE LOCATION OF THAT CORNER AS PREVIOUSLY RESTORED OR REESTABLISHED;



SURVEYOR'S CERTIFICATE: CHAPTER 7.08 (3) (I)

THE UNDERSIGNED HEREBY CERTIFIES THAT THE U.S. PUBLIC LAND SURVEY MONUMENT RECORD SHOWN WAS DETERMINED BY THEM OR UNDER THEIR DIRECTION AND IS CORRECT TO THE BEST OF THEIR KNOWLEDGE AND BELIEF.



Matthew M. Filus

THE EXCELSIOR GROUP, LLC
 MATTHEW M FILUS, WISCONSIN REGISTERED LAND SURVEYOR S-2185

JUNE 27, 2012
 DATE CERTIFIED

U.S. PUBLIC LAND SURVEY MONUMENT RECORD MONROE COUNTY, WISCONSIN.

IN ACCORDANCE WITH WISCONSIN ADMINISTRATIVE CODE, CHAPTER A-E 7.08 (3) (A) - (I)

RECOVERY PROCEDURES:

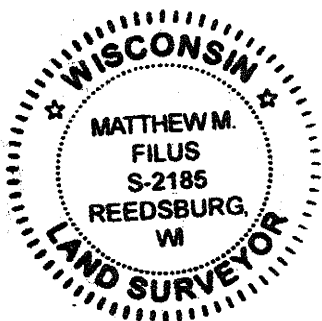
(B) A DESCRIPTION OF ANY RECORD EVIDENCE, MONUMENT EVIDENCE, OCCUPATIONAL EVIDENCE, TESTIMONIAL EVIDENCE OR ANY OTHER MATERIAL EVIDENCE CONSIDERED BY THE SURVEYOR, AND WHETHER THE MONUMENT WAS FOUND OR PLACED;
(F) WHETHER THE CORNER WAS RESTORED THROUGH ACCEPTANCE OF AN OBLITERATED EVIDENCE LOCATION OR A FOUND PERPETUATED LOCATION;
(G) WHETHER THE CORNER WAS REESTABLISHED THROUGH LOST-CORNER PROPORTIONATE METHODS;
(H) THE DIRECTIONS AND DISTANCES TO OTHER PUBLIC LAND SURVEY CORNERS WHICH WERE USED AS EVIDENCE OR USED FOR PROPORTIONING IN DETERMINING THE CORNER LOCATION;

HARLEY A. SIME REESTABLISHED THIS CORNER ON THE 17TH DAY OF AUGUST, 1981 AND PLACED A STANDARD HARRISON CAST-IRON MONUMENT AT IT'S LOCATION.

I HAVE FOUND THE STANDARD HARRISON CAST-IRON MONUMENT IN PLACE AS WELL AS TWO BEARING TREES STILL STANDING. AS THERE HAS BEEN SIGNIFICANT GROWTH OF THE TREES, THE NAILS PLACED BY MR. SIME WERE NOT EXPOSED, BUT THE TREES AGREE WITH HIS RECORD DISTANCE AS INDICATED ON SHEET ONE OF THIS DOCUMENT.

SURVEYOR'S CERTIFICATE: CHAPTER 7.08 (3) (I)

THE UNDERSIGNED HEREBY CERTIFIES THAT THE U.S. PUBLIC LAND SURVEY MONUMENT RECORD SHOWN WAS DETERMINED BY THEM OR UNDER THEIR DIRECTION AND IS CORRECT TO THE BEST OF THEIR KNOWLEDGE AND BELIEF.



A handwritten signature in black ink, appearing to read "Matthew M. Filus".

JUNE 27, 2012

THE EXCELSIOR GROUP, LLC
MATTHEW M FILUS, WISCONSIN REGISTERED LAND SURVEYOR S-2185

DATE CERTIFIED

I, Harley A. Sime, do hereby certify that on the twenty-eighth day of April 1981, I found ~~evidence~~ (no evidence) of the East 1/4 corner of Section 5, T16 N, R1 W Fourth Principal Meridian, and I re-established said corner according to the Wisconsin Statutes as shown and described hereon.

Dated this 17th day of August 1981.

Harley A. Sime

Monroe County Surveyor

Approved: HARLEY A. SIME
MONROE CO. SURVEYOR

Description of corner and witness monuments, references and accessories used to perpetuate the original or re-established location of this corner:

Witnesses to corner location:

Bryan H. Meyer

Gary L. Dechant

Carlton R. Pietz

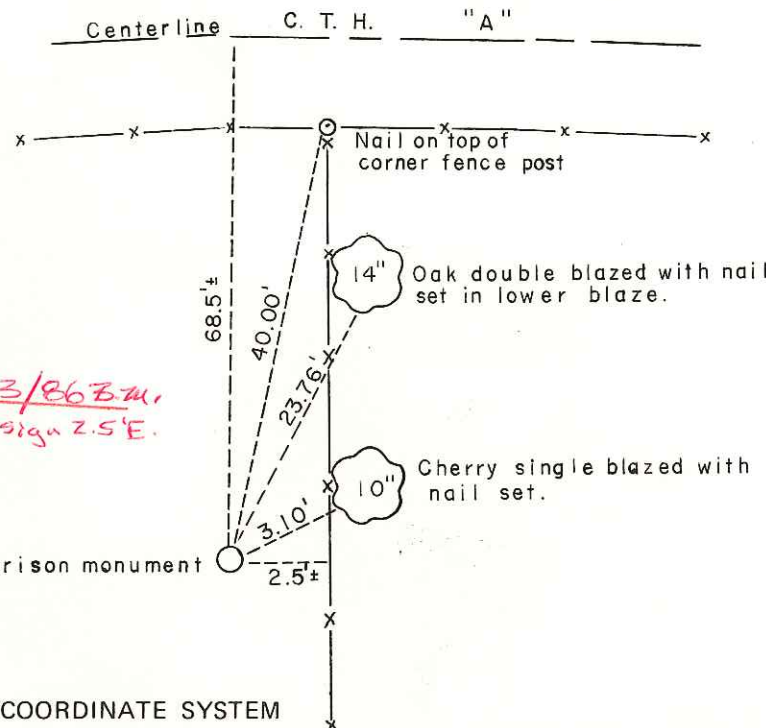
History of corner establishment since Original Government Survey

W.F. Schroeder was here in December of 1903 and set a 2" iron chisel.

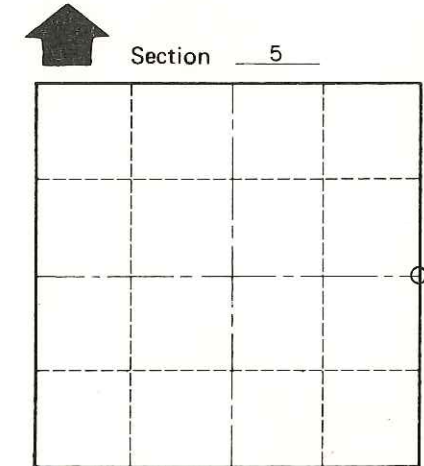
Description of corner evidence found:

Set on line with Southeast and Northeast corners and at proportionate distance according to the Original Notes as per law.

COUNTY SURVEYOR FORM NO. 1



NORTH



O = LOCATION CORNER

T 16 N R 1 W

WISCONSIN

SURVEY CONTROL ORDER

Horizontal	_____
Vertical	_____

WISCONSIN COORDINATE SYSTEM

Corner	East (X)	North (Y)	Elevation (Z)	Zone
Control Sta. Name				

~~City, Village or~~ Town of Wilton
 County of Monroe