

CERTIFICATE

CERTIFIED LAND CORNER

No. 28

21601040020

I, Garold A. Sime, do hereby certify that on the 7th day of July 1977, I found (evidence) (~~no evidence~~) of the S 1/4 corner of Section 4, T 16 N, R 1 W Fourth Principal Meridian, and I re-established said corner according to the Wisconsin Statutes as shown and described hereon.

History of original corner establishment:

Dated this 22nd day of Nov. 1977.

Description of corner evidence found:

W.F.Schroeder was at this corner in December, 1903 and said there was an iron rod at this corner, found same and accepted as the corner.

Garold A. Sime, R.L.S. 1261

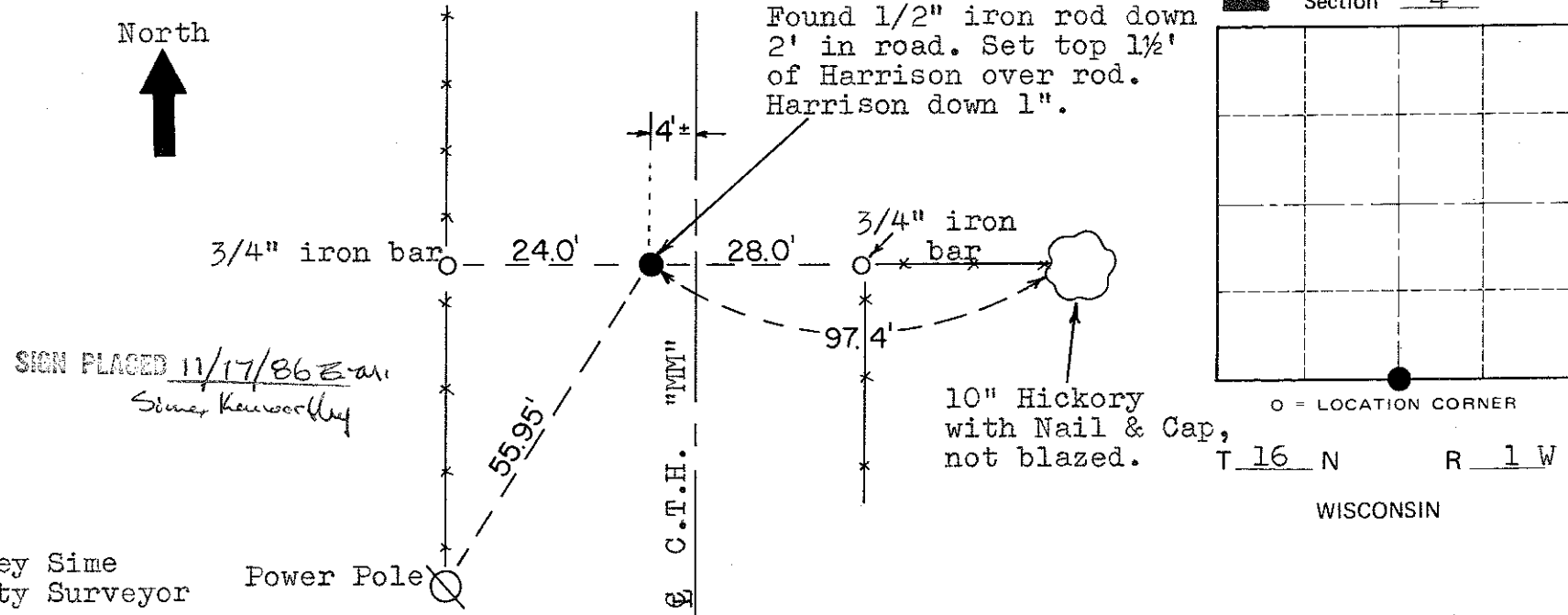
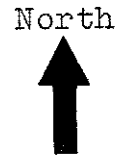
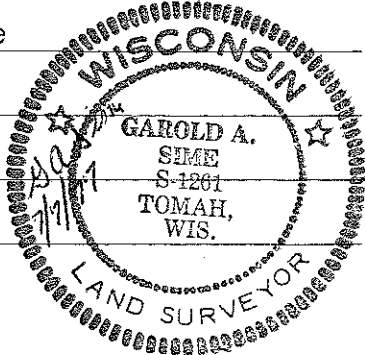
Crew Chief, County Surveyor's
Title Office

COUNTY SURVEYOR FORM NO. 1

Description of corner and witness monuments, references and accessories used to perpetuate the original or re-established location of this corner:

Witnesses to corner location:

G. A. Sime Garold A. Sime R.L.S.
D. C. Dade
B. Meyer



SIGN PLACED 11/17/86 E.A. Sime, Kauwauba

SURVEY CONTROL ORDER

Approved: Harley Sime
County Surveyor

Power Pole

Horizontal	_____
Vertical	_____

WISCONSIN COORDINATE SYSTEM

Corner	East (X)	North (Y)	Elevation (Z)	Zone
Control Sta. Name				

City, Village or Town Wilton

County of Monroe