

CERTIFICATE

CERTIFIED LAND CORNER

No. 22

21601010020

I, Bryan H. Meyer, do hereby certify that on the 18th day of August 1986, I found (evidence) ~~no evidence~~ of the North 1/4 corner of Section 12, T16 N, R1 W Fourth Principal Meridian, and I re-established said corner according to the Wisconsin Statutes as shown and described hereon.

History of corner establishment since Original Government Survey

Nothing recorded.

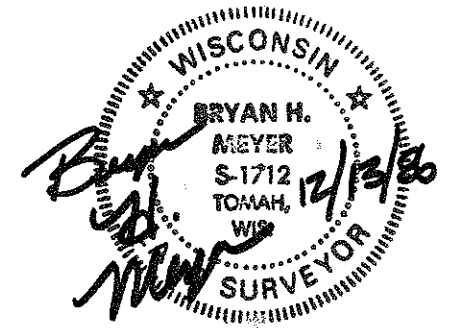
Description of corner evidence found:

I accepted the three-way fence corner as the best available evidence.

Dated this 13th day of Dec. 1986.

Bryan H. Meyer

Deputy County Surveyor
Title

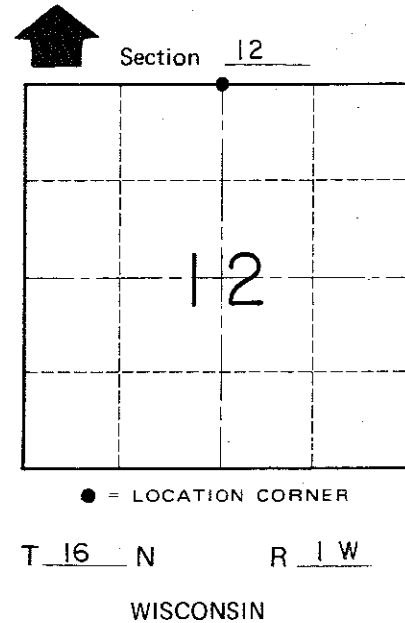
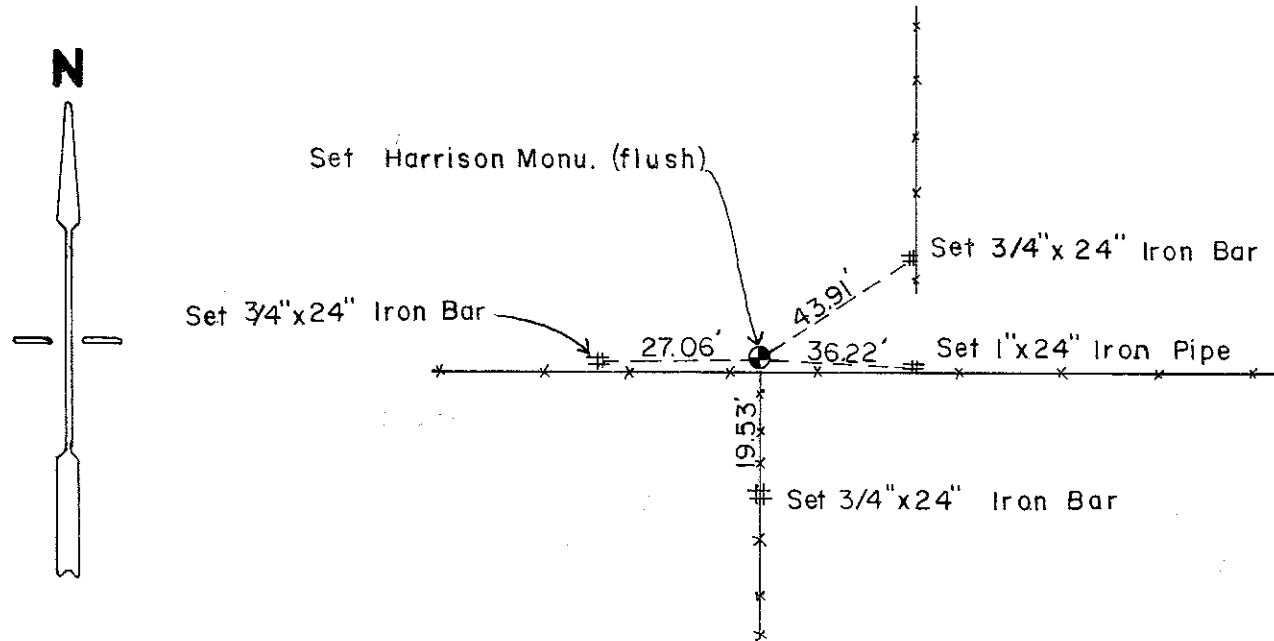


COUNTY SURVEYOR FORM NO. 1

Description of corner and witness monuments, references and accessories used to perpetuate the original or re-established location of this corner:

Crew: Wilhite, Tralmer
Date: August 18, 1986
Weather: Sunny, 70°+.
Witnesses to corner location:

Dallas Wilhite
Joel Tralmer
Bryan Meyer



SURVEY CONTROL ORDER

Horizontal	_____
Vertical	_____

WISCONSIN COORDINATE SYSTEM

Corner	East (X)	North (Y)	Elevation (Z)	Zone
Control Sta. Name				

~~City, Village or~~ Town of Wilton

County of Monroe