

127

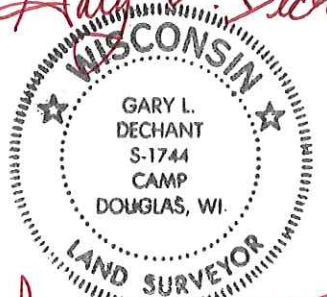
**U.S. PUBLIC LAND CORNER
MAINTENANCE**

**Corner ID : SE Sec.33, T16N-R1E
41601330000**

<u>DATE</u>	<u>CREW</u>	<u>MONUMENT TYPE</u> -----
June 12, 2015	Zachariah P. Dechant Gary L. Dechant	Harrison monument intact, 86' east of CTH "W" Survey sign 1' north

References:

	<u>Bearing</u>	<u>Distance</u>
1) Set 3/4"x24" round iron bar in field, down 14"	N36E	18.43'
2) Set 3/4"x24" round iron bar 3' NE of 10" Double Burr Oak	S53E	15.26'
3) Set 3/4"x24" round iron bar in field, down 14"	S31W	16.85'
4) Set 3/4"x24" round iron bar in field, down 12"	N56W	21.83'

Gary L. Dechant

June 12, 2015

CERTIFICATE

I, Harley A. Sime, do hereby certify that on the 28th day of July 1981, I found ~~(evidence)~~ (no evidence) of the Northwest corner of Section 3, T 15 N, R 1 E Fourth Principal Meridian, and I re-established said corner according to the Wisconsin Statutes as shown and described hereon.

Dated this 4th day of August 1981.

Harley A. Sime, R.L.S. 355

County Surveyor
Title

CERTIFIED LAND CORNER

No. 7

4160)330000

History of corner establishment since Original Government Survey

No known recorded history since the original government survey.

Description of corner evidence found:

Set on line and at proportionate distance between the northwest corner of Section 4 and the North 1/4 corner of Section 3.

See Reverse Side For Maintenance

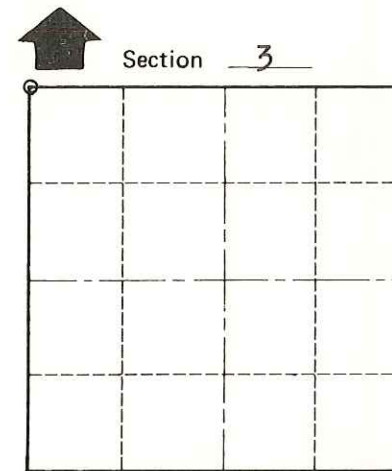
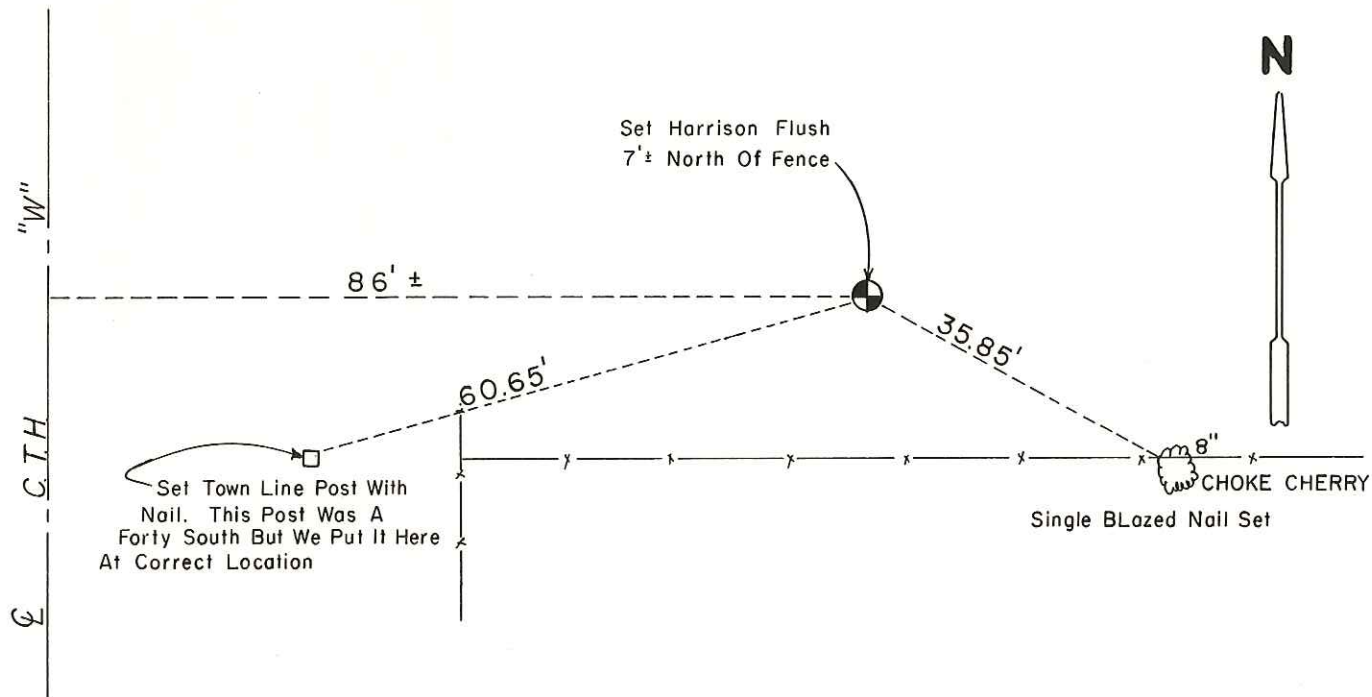
Description of corner and witness monuments, references and accessories used to perpetuate the original or re-established location of this corner:

Witnesses to corner location:

Dechant

Meyer

COUNTY SURVEYOR FORM NO. 1



O = LOCATION CORNER
T 15 N R 1 E
WISCONSIN

**Approved: HARLEY A. SIME
MONROE CO., SURVEYOR**

SURVEY CONTROL ORDER

Horizontal	_____
Vertical	_____

WISCONSIN COORDINATE SYSTEM

Corner	East (X)	North (Y)	Elevation (Z)	Zone
Control Sta. Name				

~~City, Village or~~ Town Glendale
County of Monroe
Wisconsin