

CERTIFICATE

I, Laurence E Johns III, do hereby certify that on the 10th day of June, 2009, I found (evidence) ~~(no evidence)~~ of the S 1/4 Corner of Section 32, T16N, R1E, Fourth Principle Meridian, and I re-established said corner according to the Wisconsin Statutes as shown and described hereon.

Dated this 10th day of June, 2009.

Laurence E. Johns III
Laurence E Johns III RLS 2804
Eagle Ridge Surveying
PO Box 213
Wilton, WI 54670

CERTIFIED LAND CORNER

History of corner establishment since Original Government Survey

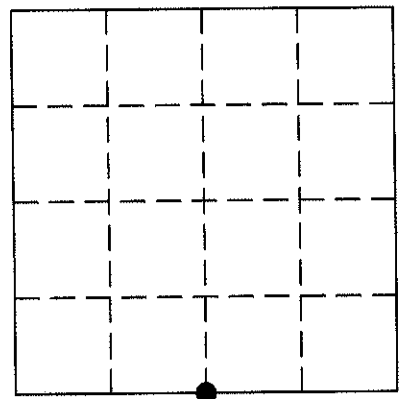
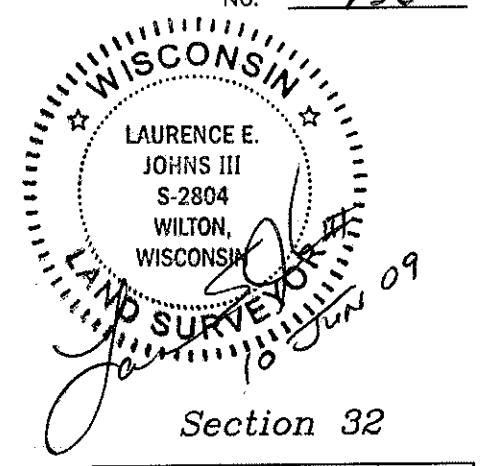
None since original government survey.

Description of corner evidence found:

Intersected the fences from the North and from the South with the straight line between the SE Corner and the SW Corner.

This location fell slightly North of the fence from the East and approximately 5' North of the fence.

Corner lands 9.7' West of the split.



● = LOCATION CORNER
T16N R1E
WISCONSIN

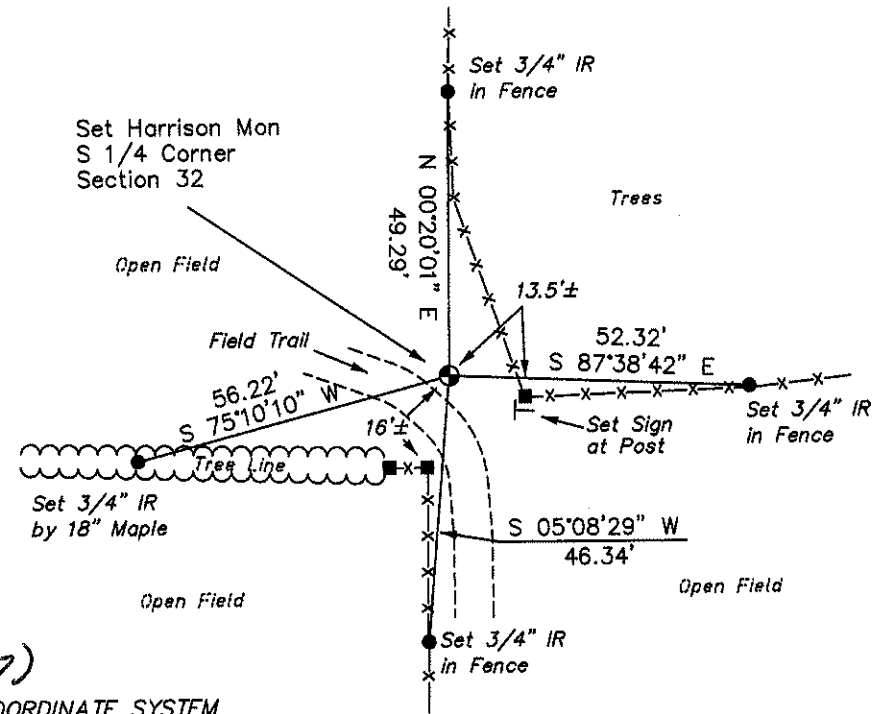
COUNTY SURVEYOR FORM NO. 1

Description of corner and witness monuments, references and accessories used to perpetuate the original or re-established location of this corner:

Witness to corner location:

Laurence E Johns III

Larry Handschy



SURVEY CONTROL ORDER

Horizontal
Vertical

NAD 83(07)
MONROE COUNTY COORDINATE SYSTEM

Corner	East (X)	North (Y)	Elevation (Z)	Zone
Corner	734258.394	332388.780		
Control Sta. Name				

City, Village or Town Clifton
County of _____