

96

**U.S. PUBLIC LAND CORNER
MAINTENANCE**

Corner ID : E¼ Sec.29, T16N-R1E

41601292000

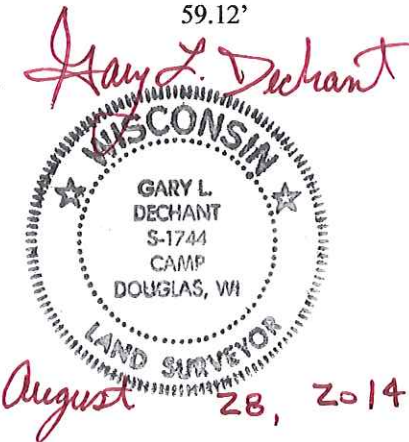
DATE	CREW	MONUMENT TYPE -----
August 28, 2014	Zachariah P.Dechant Gary L. Dechant	Found Harrison in centerline CTH "N" 29' south of culvert. 83' south of driveway fire no. 23388. On line with fences East and west.

References:

	Bearing	Distance
1) Existing 1¼" iron pipe leaning, straightened & set down 6" Survey sign 1' west	N80E	35.29'
2) Set ¾"x24" square iron bar, down 6" in line with north-south pasture fence	S47E	44.92'
3) Existing ¾" hexagon iron bar, leaning badly, straightened, set down 6" 2' east of angle iron and brace corner post	S86W	40.42'
4) Set ¾"x24" square iron bar, down 12" in field	N47W	59.12'

Reference markers 2 & 4 are on straight line with Harrison.

COORDINATES:



I, Bryan H. Meyer, do hereby certify that on the 18th day of July 1991, I found (evidence) no evidence of the East 1/4 corner of Section 29, T 16 N, R 1 E Fourth Principal Meridian, and I re-established said corner according to the Wisconsin Statutes as shown and described hereon.

Dated this 23rd day of July 1991.

Bryan H. Meyer
Deputy County Surveyor

History of corner establishment since Original Government Survey

No recorded history.

See Reverse Side For Maintenance

Description of corner evidence found:

I accepted the intersection of fence line projections from the East and West with the centerline of C.T.H. "N" as the best available evidence.



H. A. Sime and Associates
P. O. Box 705
Tomah, Wisconsin 54660
Phone: (608)-372-5392

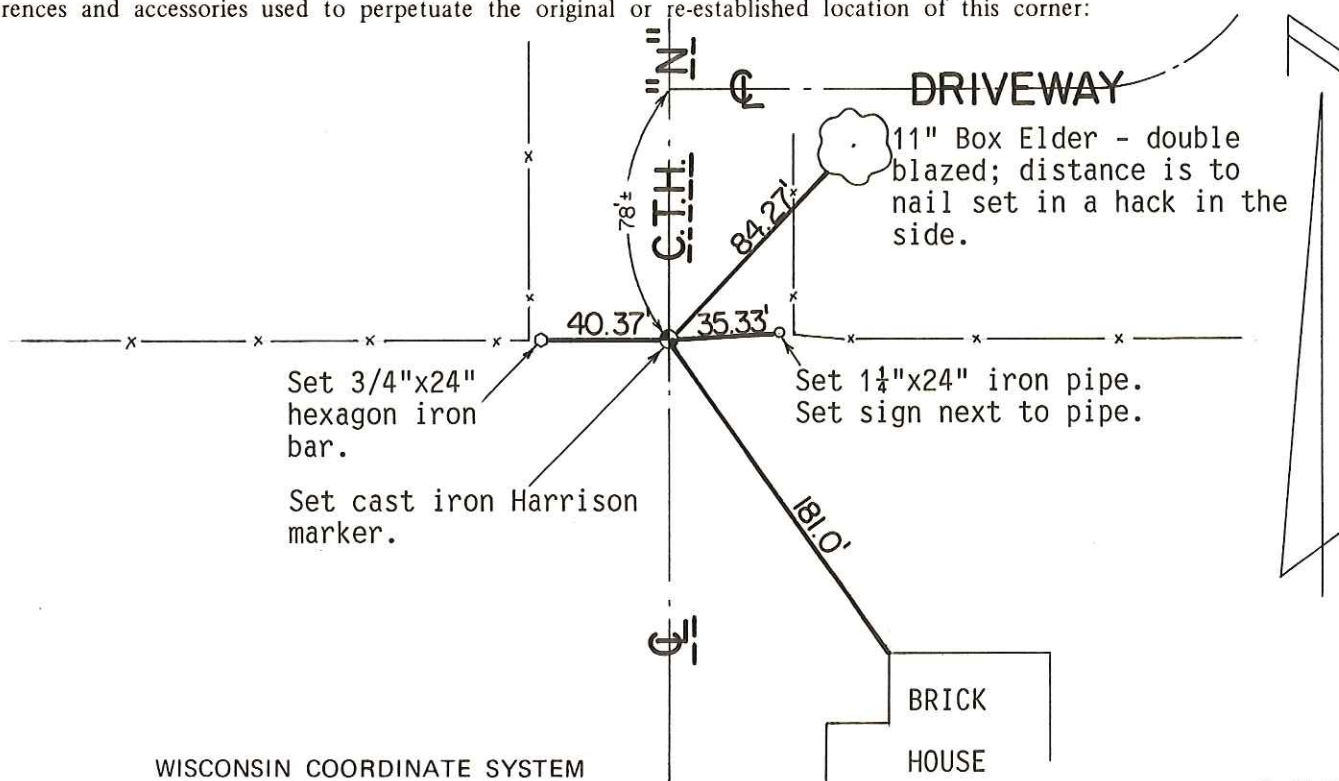
COUNTY SURVEYOR FORM NO. 1

Description of corner and witness monuments, references and accessories used to perpetuate the original or re-established location of this corner:

Crew: Meyer, Kenworthy
Date: July 18, 1991
Weather: HUMID, Sunny, 90°±
Witnesses to corner location:

John Kenworthy

Bryan H. Meyer



SURVEY CONTROL ORDER

Horizontal	_____
Vertical	_____

WISCONSIN COORDINATE SYSTEM				
Corner	East (X)	North (Y)	Elevation (Z)	Zone
Control Sta. Name				

BRICK HOUSE

~~City, Village or~~ Town of Clifton

County of Monroe