

CERTIFICATE

I, Laurence E Johns III, do hereby certify that on the 8th day of June, 2009, I found (evidence) ~~(no evidence)~~ of the N 1/4 Corner of Section 32, T16N, R1E, Fourth Principle Meridian, and I re-established said corner according to the Wisconsin Statutes as shown and described hereon.

CERTIFIED LAND CORNER

History of corner establishment since Original Government Survey

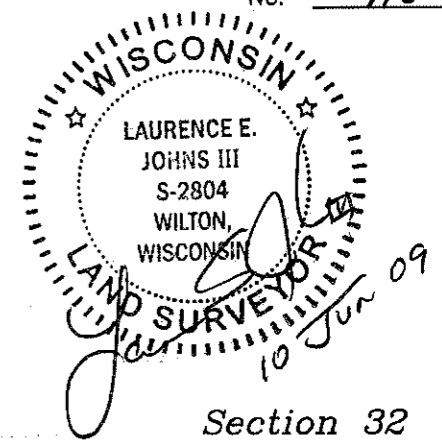
None since original government survey.

Dated this 10th day of June, 2009.

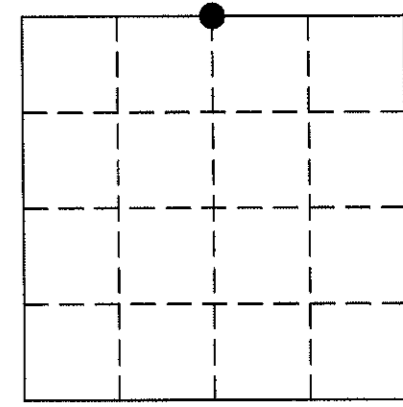
*Laurence E. Johns III*  
Laurence E Johns III RLS 2804  
Eagle Ridge Surveying  
PO Box 213  
Wilton, WI 54670

Description of corner evidence found:

The 3-way fence corner is 8' West and 6' South of the straight line split.  
Accepted the fence corner as the best available evidence of the original government corner.



Section 32



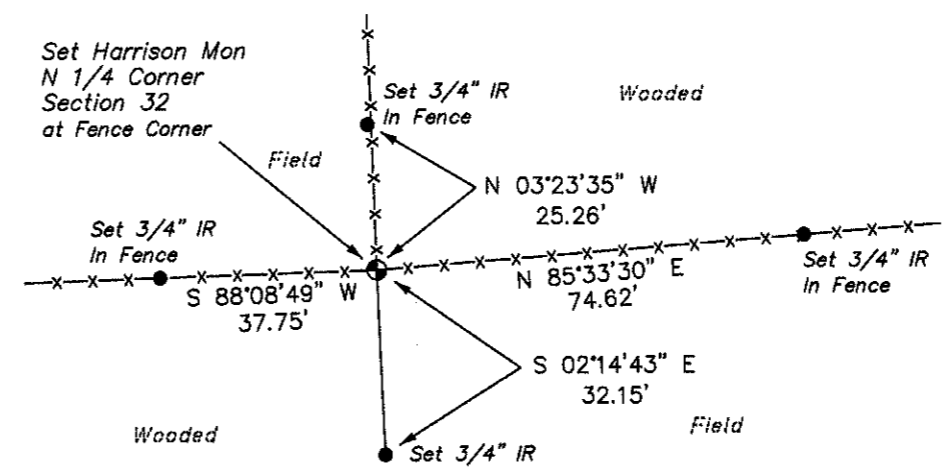
● = LOCATION CORNER  
T16N R1E  
WISCONSIN

COUNTY SURVEYOR FORM NO. 1

Description of corner and witness monuments, references and accessories used to perpetuate the original or re-established location of this corner:

Witness to corner location:

Laurence E Johns III  
Larry Handschy



SURVEY CONTROL ORDER

Table with 2 rows: Horizontal, Vertical

NAD 83 (07)

WISCONSIN COORDINATE SYSTEM

Table with 5 columns: Corner, East (X), North (Y), Elevation (Z), Zone. Values: 734289.668, 337670.573

City, Village or Town Clifton  
County of Monroe