

**U.S. PUBLIC LAND CORNER  
MAINTENANCE**

# 97

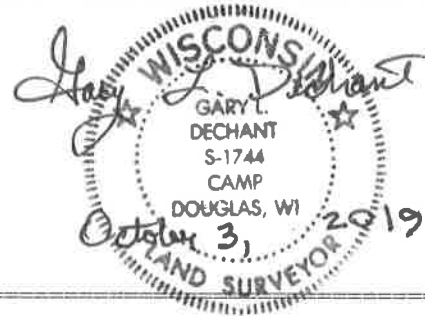
Corner ID: W1/4 Sec. 27, T16N-R1E

41601282000

<u>DATE</u>	<u>CREW</u>	<u>MONUMENT TYPE</u>
October 3, 2019	Zachariah P. Dechant Gary L. Dechant	Harrison intact at old down fence corner. Newer fence 40' south & 14' east. Set sign 1½' south.

References:

	<u>Bearing</u>	<u>Distance</u>
1) Set ¾"x24" round iron bar, down 4", SW side of rock, 3' west of newer fence	N40E	17.27'
2) Set ¾"x24" round iron bar, down 4", 3' NW of 3" Hickory	S60E	23.65'
3) Set ¾"x24" round iron bar, down 4", between four stones	S34W	33.69'
4) Set ¾"x24" round iron bar, down 4", west of stone, 3' north of 14" Black Oak with east-west wire N80W	N80W	12.22'



I, James J. Carroll, do hereby certify that on the 23rd day of May 1984, I found ~~(no evidence)~~ (no evidence) of the W 1/4 corner of Sec. 27, T 16 N, R 1E Fourth Principal Meridian, and I re-established said corner according to the Wisconsin Statutes as shown and described hereon.

Dated this 28 day of May 1984.

James J. Carroll  
RLS 5-606  
 Title

History of corner establishment since Original Government Survey

We ran an extensive EDM traverse of Section 27, T16N, R1E, tying together all the visible physical features that could be found. This corner was established and set by section construction by single proportionate measure from the existing calls found in the field.

Description of corner evidence found:

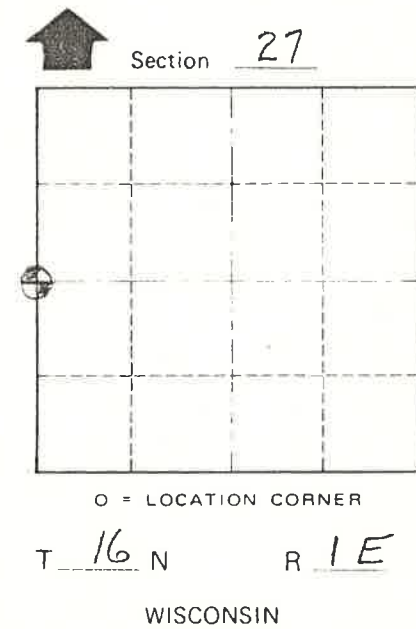
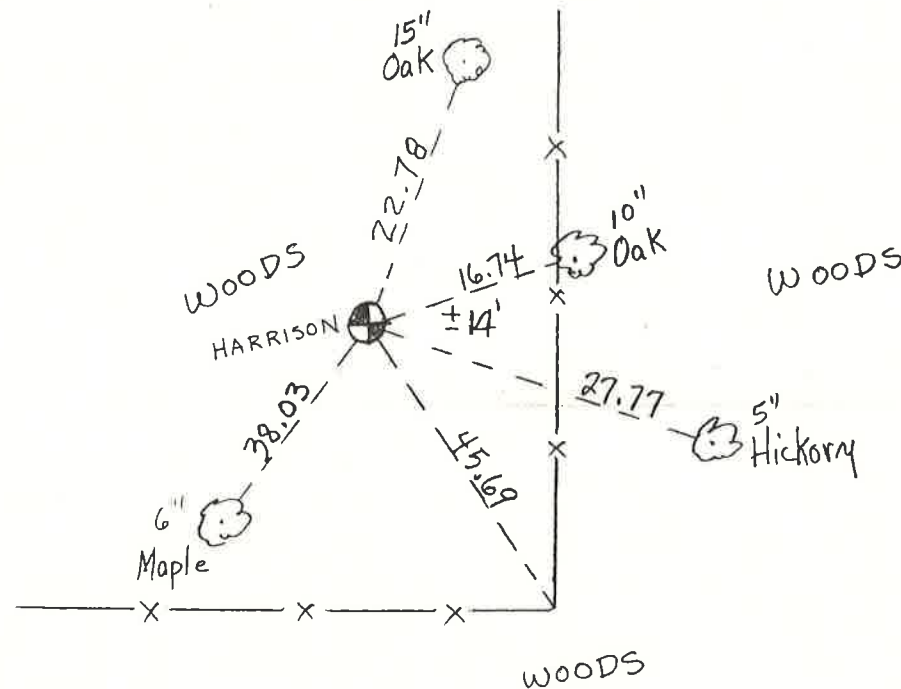
When we were digging for the monument placement we found old loop end wire as evidence that at some time there was a corner here.

**See Reverse Side For Maintenance**

Description of corner and witness monuments, references and accessories used to perpetuate the original or re-established location of this corner:

Witnesses to corner location:

Mike Carroll  
Dan Carroll  
Kevin Carroll



COUNTY SURVEYOR FORM NO. 1

SURVEY CONTROL ORDER

Horizontal	
Vertical	

WISCONSIN COORDINATE SYSTEM

Corner	East (X)	North (Y)	Elevation (Z)	Zone
Control Sta. Name				

City, Village or Town CLIFTON  
 County of MONROE