

CERTIFICATE

CERTIFIED LAND CORNER

41601262020

No. 98 B

I, Harley A. Sime, do hereby certify that on the 2 day of June 19 76, I found (evidence) (~~no evidence~~) of the C 1/4 corner of Section 26, T 16 N, R 1 E, Fourth Principal Meridian, and I re-established said corner according to the Wisconsin Statutes as shown and described hereon.

History of original corner establishment:

Description of corner evidence found:

Set corner by intersecting E-W and N-S 1/4 lines.

Dated this 7 day of Sept. 19 77.

County Surveyor

Title

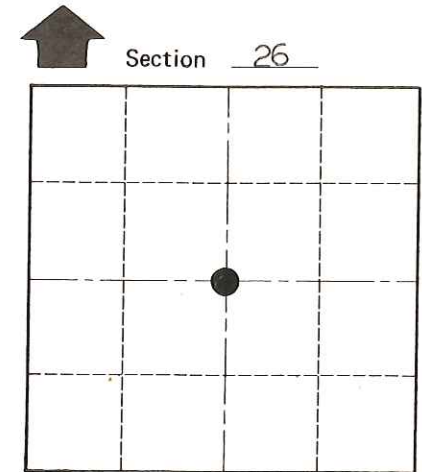
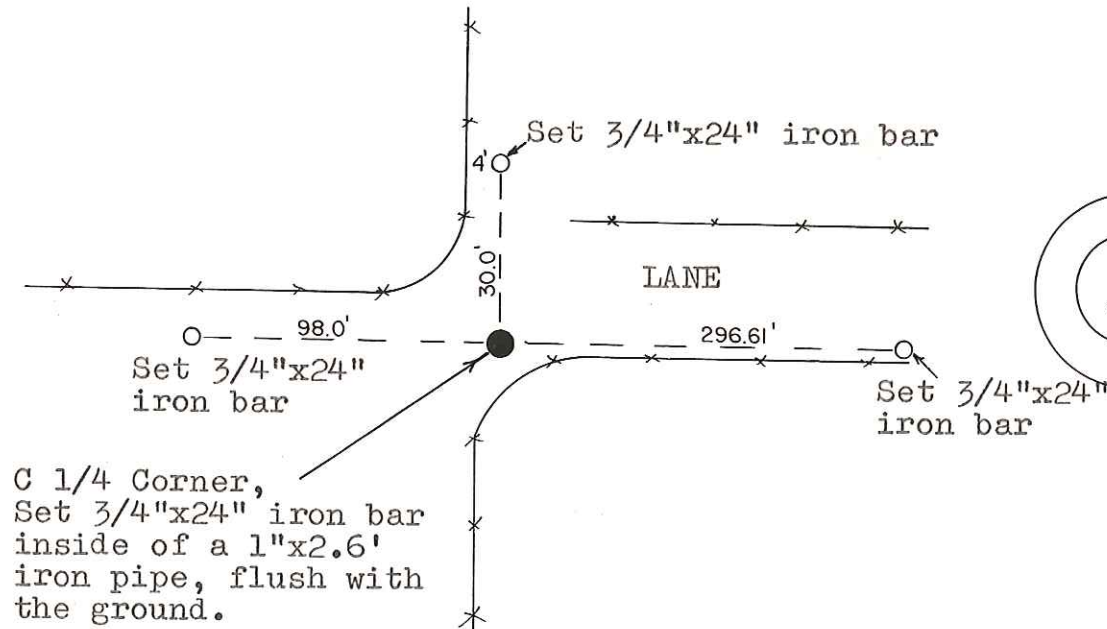
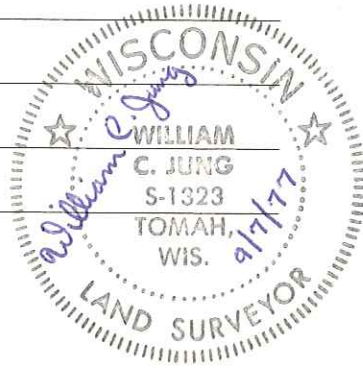
Approved: **HARLEY A. SIME**
MONROE CO. SURVEYOR

Description of corner and witness monuments, references and accessories used to perpetuate the original or re-established location of this corner:

Witnesses to corner location:

W. Jung - Crew Chief

G. Dechant



O = LOCATION CORNER
T 16 N R 1 E
WISCONSIN

SURVEY CONTROL ORDER

Horizontal	_____
Vertical	_____

WISCONSIN COORDINATE SYSTEM

Corner	East (X)	North (Y)	Elevation (Z)	Zone
Control Sta. Name				

City, Village or Town Clifton
County of Monroe

COUNTY SURVEYOR FORM NO. 1