

JUNEAU COUNTY SURVEY MONUMENT RECORD

CORNER NO. 101
SECTION 30
TOWN 16 N.
RANGE 2 E.

TYPE OF MONUMENT: MONROE COUNTY TCP MONUMENT FOUND

JUNEAU COUNTY COORDINATES NAD 83/91
NORTHING: 170,265.15
EASTING: 400,697.04

■ = CORNER MONUMENT RESTORED

BASIS FOR MONUMENT LOCATION
(USE REVERSE SIDE IF NECESSARY)

SHOW INFO SUCH AS: HISTORY OF CORNER, WITH REFERENCE TO VOLUME AND PAGE DATES, SURVEYOR; EXACT DESCRIPTION OF MONUMENT PLACED OR FOUND, IF LOCATION COMPUTED, BY TAPED OR EDM TRAVERSE; LANDOWNER REMARKS, ETC.

MONROE COUNTY TCP MONUMENT FOUND AS PER TIE SHEET DATED 5/10/96 BY GARY DECHANT.



LEGEND

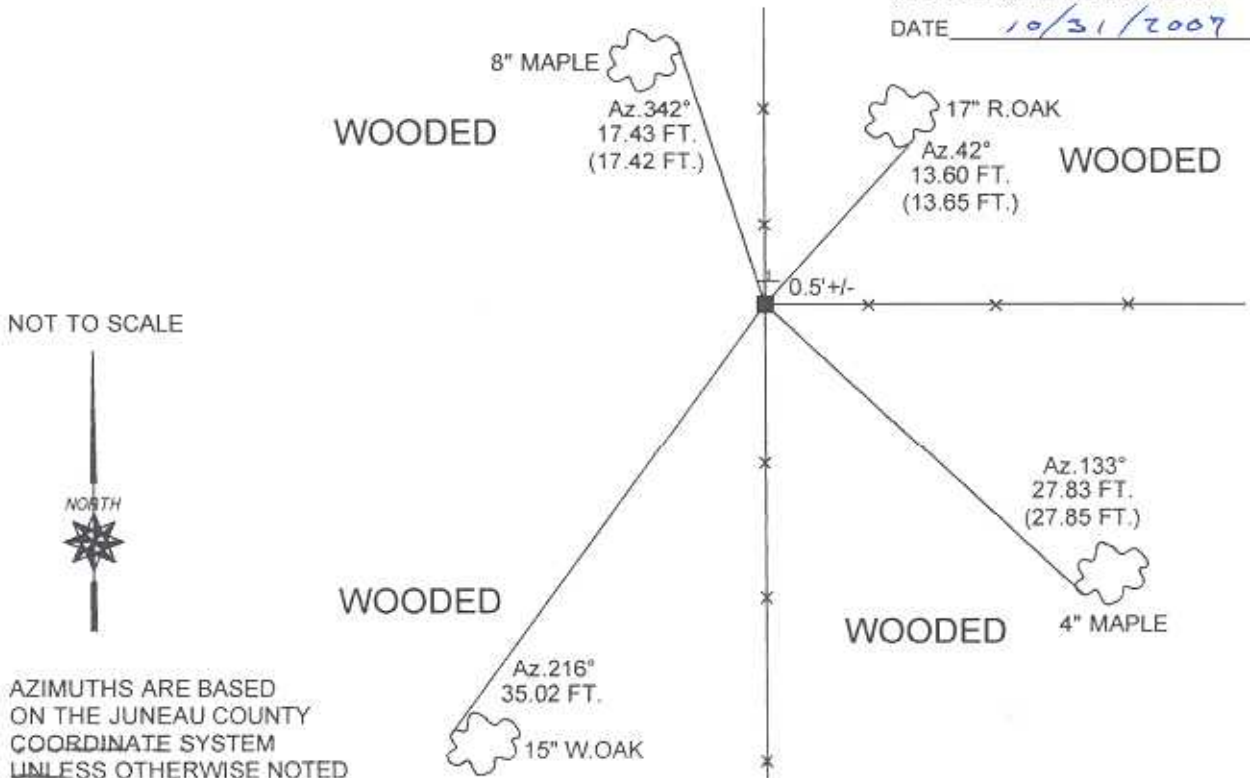
- = MONROE COUNTY TCP MONUMENT FOUND
- λ = GOVERNMENT SIGN
- TREE TIES ARE FOUND 40d NAILS
- AZIMUTHS ARE MAGNETIC



CERTIFIED CORRECT

Patrick J. Dederich
REGISTERED LAND SURVEYOR
DATE 10/31/2007

TIE SKETCH
(SHOW AT LEAST FOUR TIES)



CERTIFICATE

CERTIFIED LAND CORNER

No. 101

41601250000

I, Gary L. Dechant, do hereby certify that on the 3rd day of May 1996, I found (evidence) (~~no evidence~~) of the SE corner of Section 25, T 16 N, R 1 E Fourth Principal Meridian, and I re-established said corner according to the Wisconsin Statutes as shown and described hereon.

Dated this 10th day of May 1996.

Gary L. Dechant

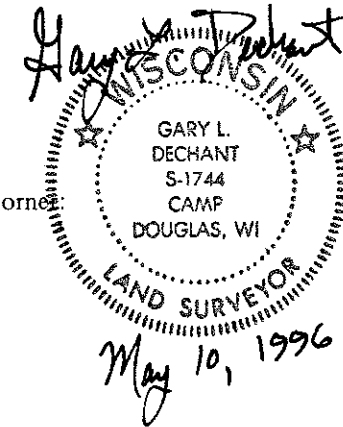
R.L.S. 1744
Title

History of corner establishment since Original Government Survey

No known recorded history since the original government survey.

Description of corner evidence found:

Accepted 4-way fence corner as best available evidence, fits other corners of Sec. 25 T16N-R1E and of Sec. 30, T16N-R2E, very well.

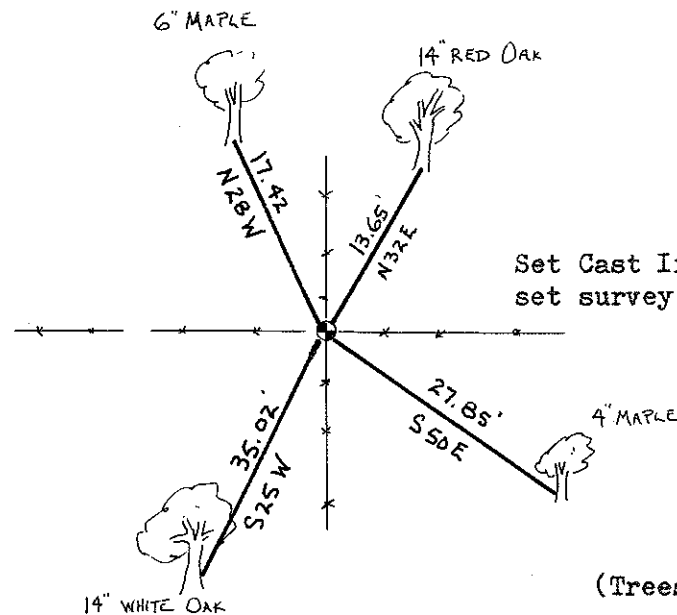


Description of corner and witness monuments, references and accessories used to perpetuate the original or re-established location of this corner:

Witnesses to corner location:

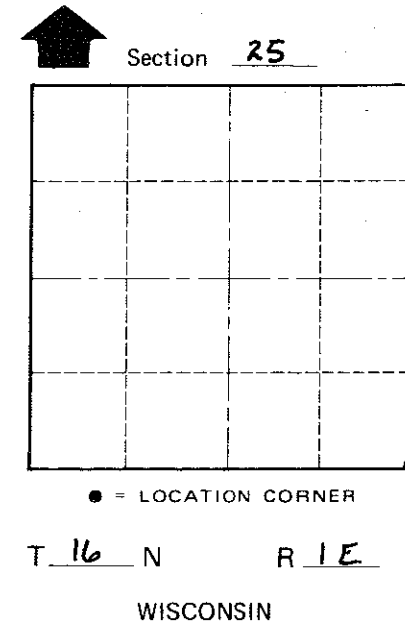
David E. Madison

Gary L. Dechant



Set Cast Iron TCP Monument
set survey sign 1' north.

(Trees double blazed with 40d nail set)



COUNTY SURVEYOR FORM NO. 1

SURVEY CONTROL ORDER

Horizontal	_____
Vertical	_____

WISCONSIN COORDINATE SYSTEM

Corner	East (X)	North (Y)	Elevation (Z)	Zone
Control Sta. Name				

City, Village or Town CLIFTON
County of MONROE