

# JUNEAU COUNTY SURVEY MONUMENT RECORD

CORNER NO. 74  
SECTION 19  
TOWN 16 N.  
RANGE 2 E.

TYPE OF MONUMENT: 1" DIAMETER IRON PIPE FOUND

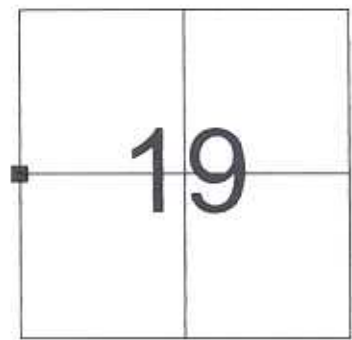
JUNEAU COUNTY COORDINATES NAD 83/91  
NORTHING: 178,155.61  
EASTING: 400,726.62

■ = CORNER MONUMENT RESTORED

BASIS FOR MONUMENT LOCATION  
(USE REVERSE SIDE IF NECESSARY)

SHOW INFO SUCH AS: HISTORY OF CORNER, WITH REFERENCE TO VOLUME AND PAGE DATES, SURVEYOR; EXACT DESCRIPTION OF MONUMENT PLACED OR FOUND, IF LOCATION COMPUTED, BY TAPED OR EDM TRAVERSE, LANDOWNER REMARKS, ETC.

1" DIAMETER IRON PIPE FOUND AS PER TIE SHEET DATED 7/27/89 BY JAMES CARROLL



LOCATION

## LEGEND

- = 1" DIAMETER IRON PIPE FOUND
- λ = GOVERNMENT SIGN
- TREE TIES ARE FOUND RR SPIKES
- AZIMUTHS ARE MAGNETIC

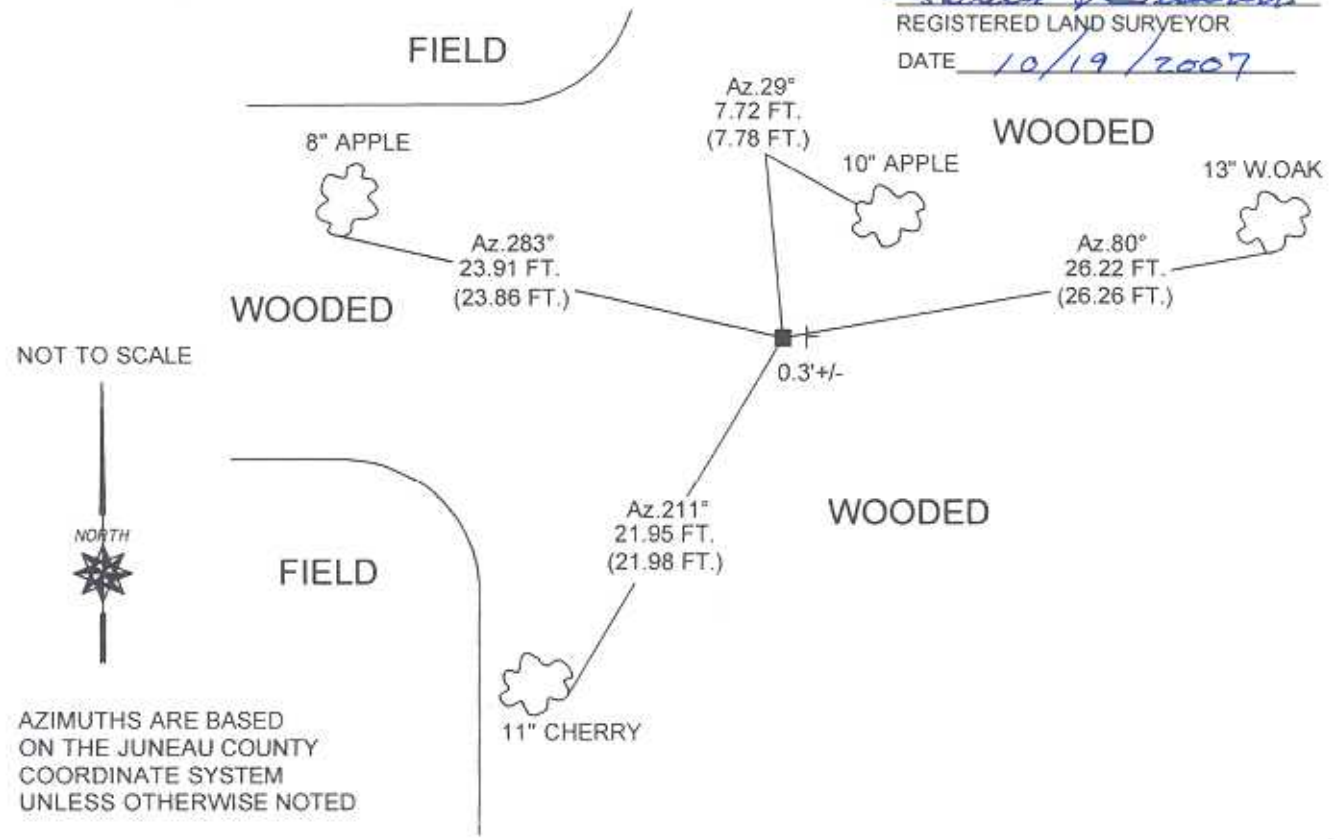


CERTIFIED CORRECT

*Patrick J. Dederich*  
REGISTERED LAND SURVEYOR

DATE 10/19/2007

TIE SKETCH  
(SHOW AT LEAST FOUR TIES)

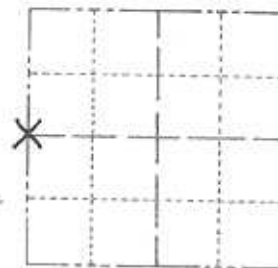


# JUNEAU COUNTY

CORNER NO. \_\_\_\_\_  
 SECTION 19  
 TOWN 16  
 RANGE 2

## Survey Monument Record

TYPE OF MONUMENT: 1" IRON PIPE  
 STATE PLANE COORDINATES: N \_\_\_\_\_  
 E \_\_\_\_\_  
 ELEVATION — M.S.L. DATUM: \_\_\_\_\_  
 THETA ANGLE: \_\_\_\_\_  
 FIELD BOOK: \_\_\_\_\_ PAGE \_\_\_\_\_



LOCATION  
(Indicated by 'X')

SEAL:



### BASIS FOR MONUMENT LOCATION

(Use reverse side if necessary)

Show info such as: History of corner, with reference to Vol. and pg. dates, surveyor; exact description of monument replaced; if location computed, by taped or EDM traverse; landowner remarks, etc.

*Accepted this fence corner as the best evidence for this corner location*

CERTIFIED CORRECT:  
*James Carroll*  
 Registered Land Surveyor  
 DATE: 7-27-89

### TIE SKETCH

(Show at least four ties)

