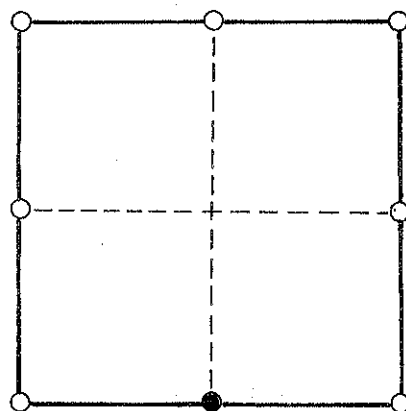


CERTIFIED LAND CORNER

I do hereby certify that on the 10th day of April, 2006, I found (no evidence) of the S/4 corner of Section 24, T 16 N, R 1 E W, Fourth Principal Meridian, and I re-established said corner according to the Wisconsin Statutes as shown and described hereon.

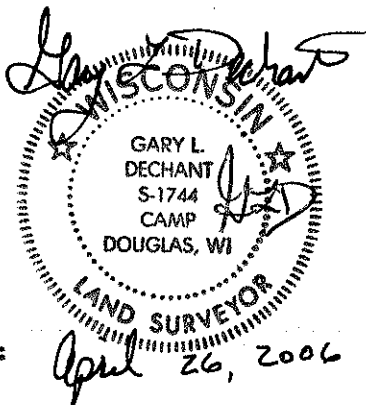
SECTION 24



● = CORNER LOCATION

T 16 N R 1 E W

TOWN OF: Clifton



Witnesses to corner location:

Gary L. Dechant

Zachariah P. Dechant

HISTORY OF CORNER:

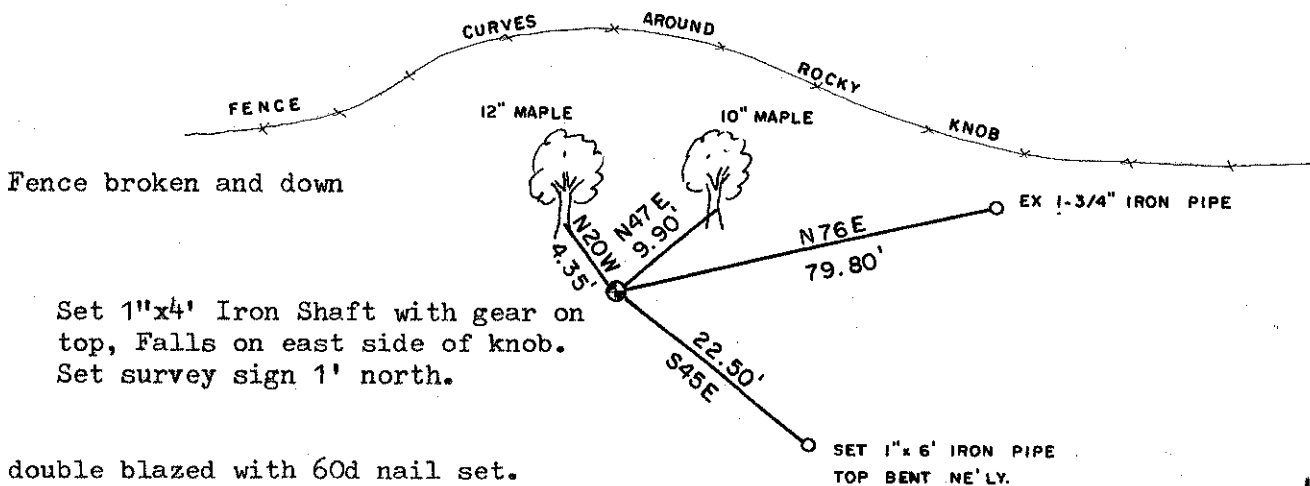
Bret Davies was here in March of 2004 as shown in Vol. 17 CSM P 78 where he shows an unrecorded 1 1/2" Iron Pipe.

This pipe matches alignment in J. Carroll's survey in March of 1989 Vol. 7 P 148 and an earlier Plat of Survey done by Carroll but does not show it in either survey.

DESCRIPTION OF CORNER EVIDENCE FOUND:

I did not accept the Iron Pipe as described above because it does not fit other section evidence very well and do not know its origin for certain. I established this corner at the intersection of the old occupied woven wire fence corner (approx. 40' west of newer fence corner) at the C/4 projecting line south with stone at the N/4 corner with a straight line between SW & SE section corners. Fits well with overall original note proration and old occupation in Section 25.

DESCRIPTION OF CORNER AND WITNESS MARKERS:



Trees double blazed with 60d nail set.