

# JUNEAU COUNTY SURVEY MONUMENT RECORD

CORNER NO. 81  
SECTION 30  
TOWN 16 N.  
RANGE 2 E.

TYPE OF MONUMENT: MONROE COUNTY TCP MONUMENT FOUND

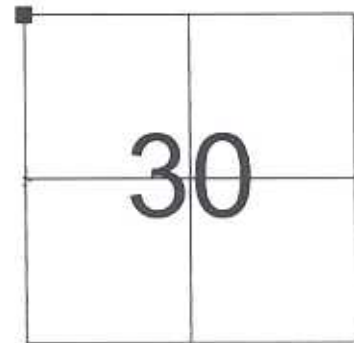
JUNEAU COUNTY COORDINATES NAD 83/91  
NORTHING: 175,546.48  
EASTING: 400,719.29

■ = CORNER MONUMENT RESTORED

BASIS FOR MONUMENT LOCATION  
(USE REVERSE SIDE IF NECESSARY)

SHOW INFO SUCH AS: HISTORY OF CORNER, WITH REFERENCE TO VOLUME AND PAGE DATES, SURVEYOR; EXACT DESCRIPTION OF MONUMENT PLACED OR FOUND, IF LOCATION COMPUTED, BY TAPED OR EDM TRAVERSE; LANDOWNER REMARKS, ETC.

NO JUNEAU COUNTY TIE SHEET. MONROE COUNTY TCP MONUMENT AND SIGN FOUND.



LOCATION



CERTIFIED CORRECT

*Patrick J. Dederich*

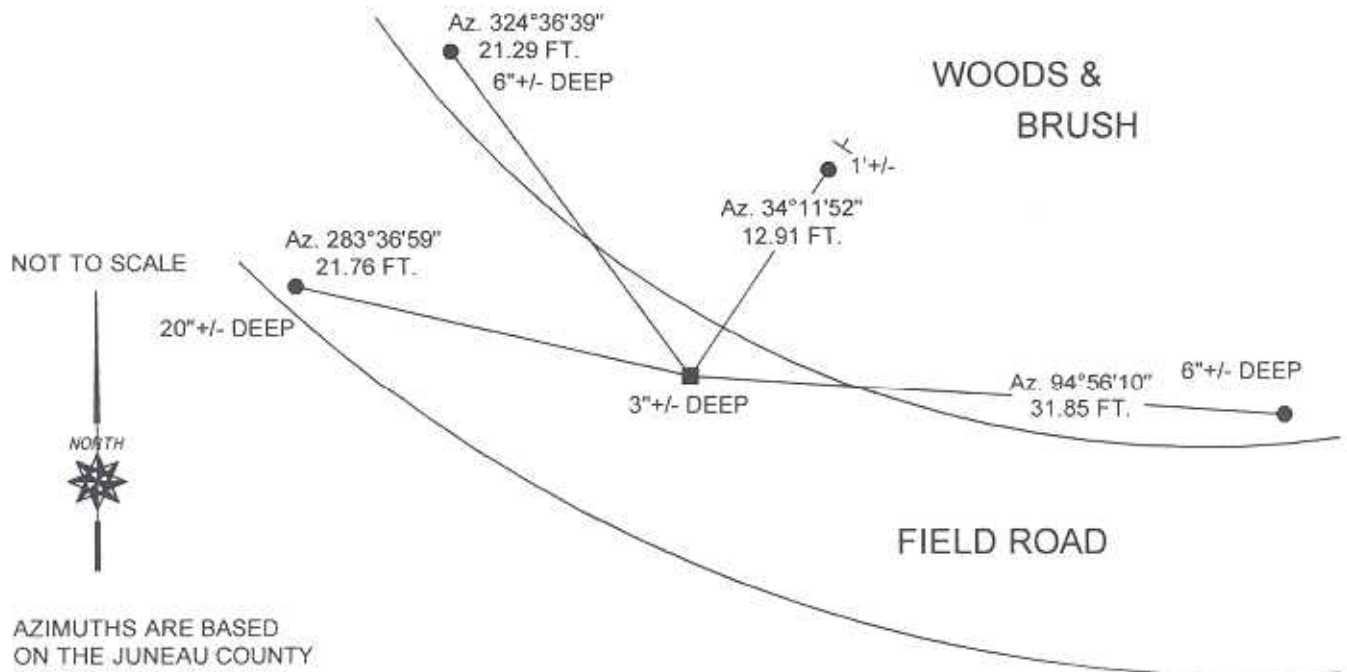
REGISTERED LAND SURVEYOR

DATE 10/19/2007

## LEGEND

- = MONROE COUNTY TCP MONUMENT FOUND
- = 3/4" X 24" IRON ROD SET
- λ = GOVERNMENT SIGN

TIE SKETCH  
(SHOW AT LEAST FOUR TIES)



NOT TO SCALE



AZIMUTHS ARE BASED  
ON THE JUNEAU COUNTY  
COORDINATE SYSTEM  
UNLESS OTHERWISE NOTED

41601240000

I, Gary L. Dechant, do hereby certify that on the 3rd day of May 1996, I found (evidence) (~~no evidence~~) of the NE corner of Section 25, T 16 N, R 1 E Fourth Principal Meridian, and I re-established said corner according to the Wisconsin Statutes as shown and described hereon.

Dated this 10 day of may 1996.

Gary L. Dechant  
R.L.S. 1744

Title

History of corner establishment since Original Government Survey

James Carroll set an iron pipe at this corner in 1994, no ties or bearing trees.

Description of corner evidence found:

Found iron pipe set by Carroll destroyed. Falls in field road and was knocked out. Retraced his survey in Sec. 19 T16N-R2E to reset corner. Falls at intersection of existing fences north and east very well. Set TCP-Cast Iron Monument down 6"+ in field road. Fits other corners along county line very well.

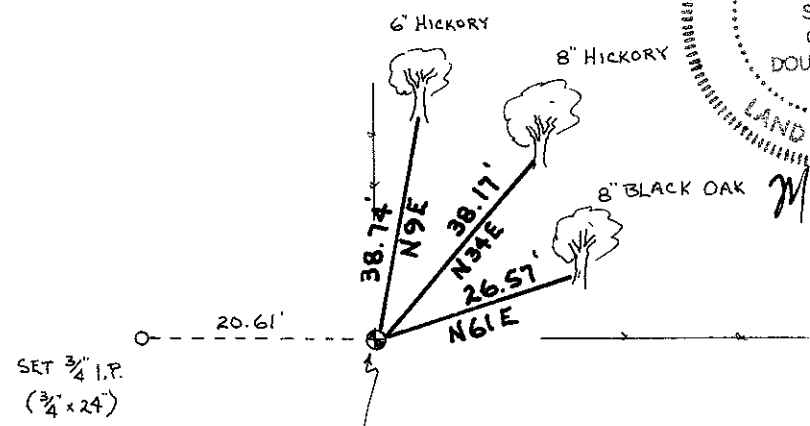
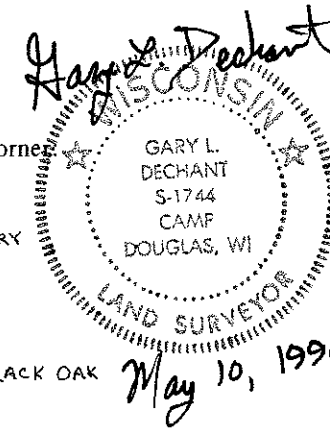
COUNTY SURVEYOR FORM NO. 1

Description of corner and witness monuments, references and accessories used to perpetuate the original or re-established location of this corner:

Witnesses to corner location:

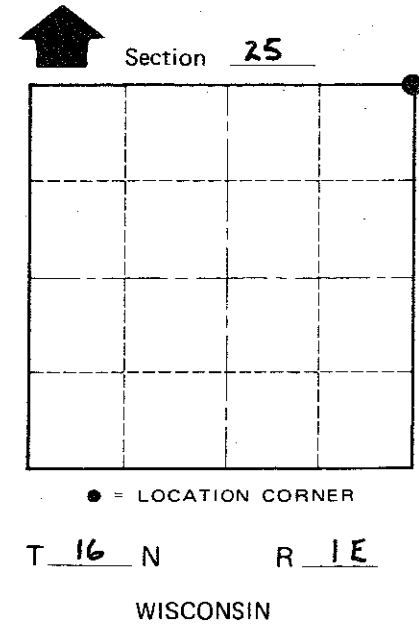
David E. Madison

Gary L. Dechant



Set TCP monument down 6"+ in field road set survey sign 14' to the NE

(Trees double blazed with 40d nail set)



SURVEY CONTROL ORDER

Horizontal	_____
Vertical	_____

WISCONSIN COORDINATE SYSTEM

Corner	East (X)	North (Y)	Elevation (Z)	Zone
Control Sta. Name				

City, Village or Town CLIFTON  
County of MONROE