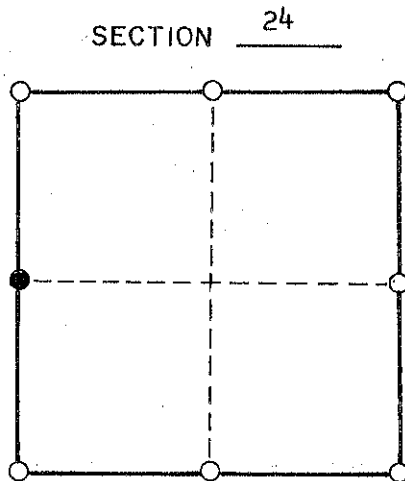
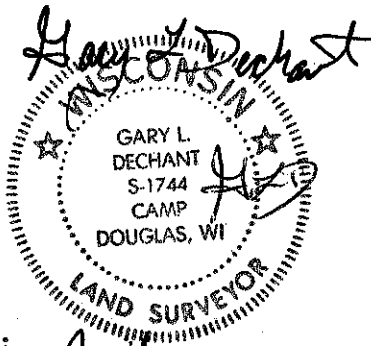


CERTIFIED LAND CORNER

I do hereby certify that on the 10th day of April, 2006, I found (evidence) ~~(no evidence)~~ of the ^{W/4} corner of Section 24, T 16 N, R 1 E W, Fourth Principal Meridian, and I re-established said corner according to the Wisconsin Statutes as shown and described hereon.



● = CORNER LOCATION
T 16 N R 1 E W
TOWN OF: Clifton

Witnesses to corner location:

April 27, 2006

Zachariah P. Dechant

Gary L. Dechant

HISTORY OF CORNER:

W. Jung and grunt Dechant set this corner on August 11, 1976 at a fence corner.

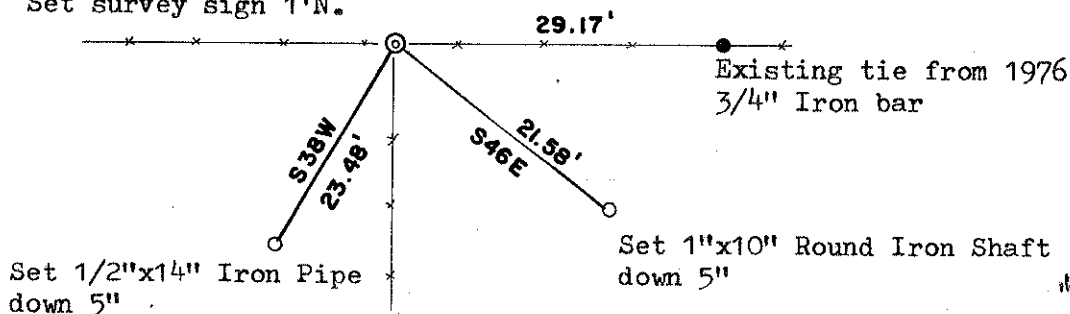
DESCRIPTION OF CORNER EVIDENCE FOUND:

Found corner destroyed as well as tie to the west. Reset the corner from the tie (3/4" Iron bar) to the east and old survey point from work I did in Section 23. Fits surveys done by James Carroll and Bret Davies in Section 24.

DESCRIPTION OF CORNER AND WITNESS MARKERS:

F I E L D

Reset corner, drove 1"x4.5' round iron shaft thru rock Set survey sign 1'N.



(Page 2) 79

I, Harley A. Sime, do hereby certify that on the 11 day of August 1976, I found (evidence) (~~no evidence~~) of the E 1/4 corner of Section 23, T 16 N, R 1 E, Fourth Principal Meridian, and I re-established said corner according to the Wisconsin Statutes as shown and described hereon.

Dated this 7 day of Sept. 1977.

History of original corner establishment:

Description of corner evidence found:

Accepting the existing fence corner as the best available evidence. Fits the section very well.

County Surveyor
Title

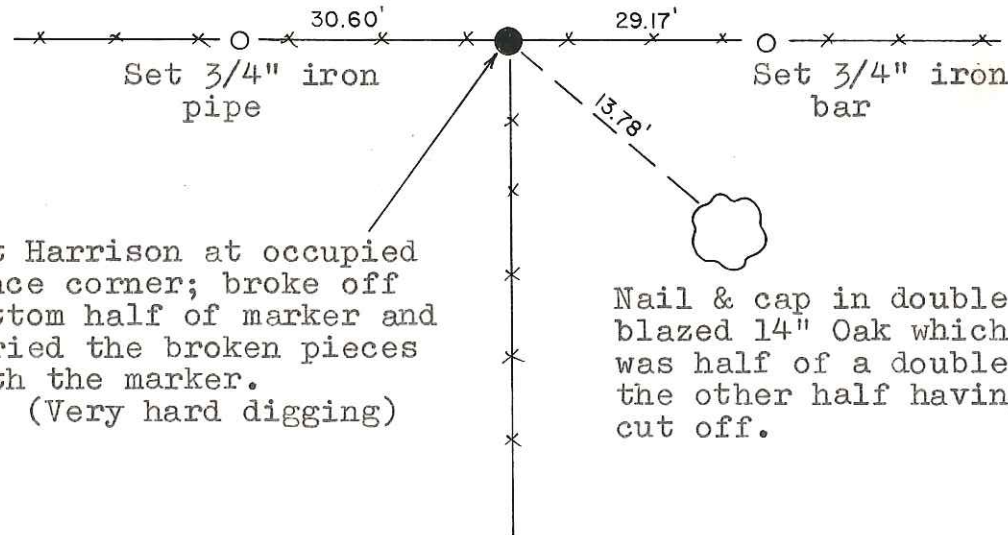
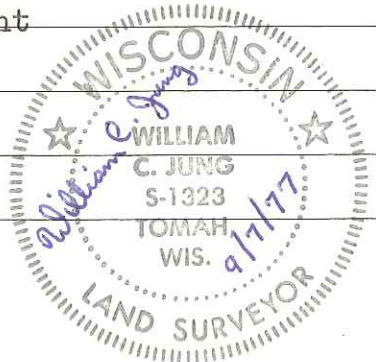
**Approved: HARLEY A. SIME
MONROE CO. SURVEYOR**

Description of corner and witness monuments, references and accessories used to perpetuate the original or re-established location of this corner:

Witnesses to corner location:

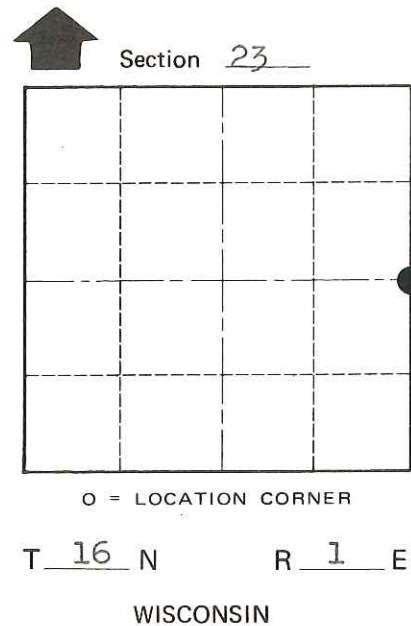
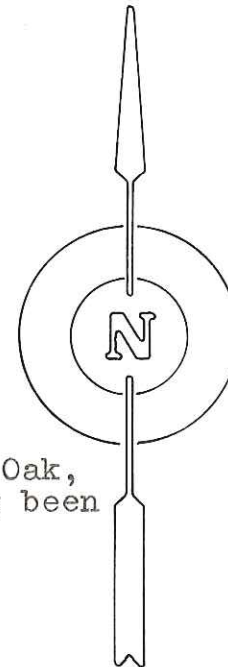
W. Jung - Crew Chief

G. Dechant



Set Harrison at occupied fence corner; broke off bottom half of marker and buried the broken pieces with the marker.
(Very hard digging)

Nail & cap in double blazed 14" Oak, the other half having been cut off.



O = LOCATION CORNER

T 16 N R 1 E
WISCONSIN

COUNTY SURVEYOR FORM NO. 1

SURVEY CONTROL ORDER

Horizontal	_____
Vertical	_____

WISCONSIN COORDINATE SYSTEM

Corner	East (X)	North (Y)	Elevation (Z)	Zone
Control Sta. Name				

City, Village or Town Clifton

County of Monroe