

41601162000

I, Gary L. Dechant, do hereby certify that on the 15th day of October 1998, I found ~~(evidence)~~ (no evidence) of the W/4 corner of Section 15, T 16 N, R 1 E Fourth Principal Meridian, and I re-established said corner according to the Wisconsin Statutes as shown and described hereon.

Dated this 2nd day of Nov. 1998.

Gary L. Dechant
R.L.S. 1744
Title

History of corner establishment since Original Government Survey

H.A. Sime & Associates show a computed corner on a section summary dated Jan. 1980.

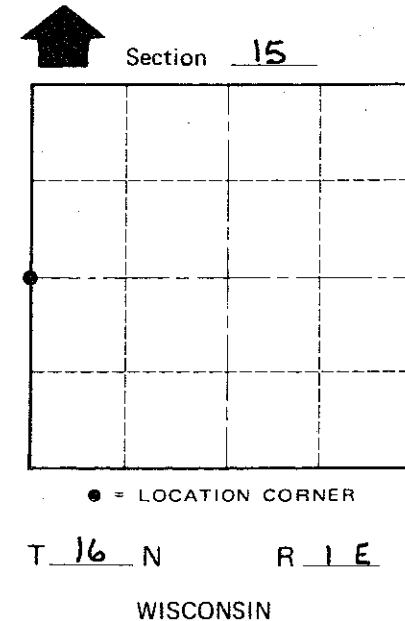
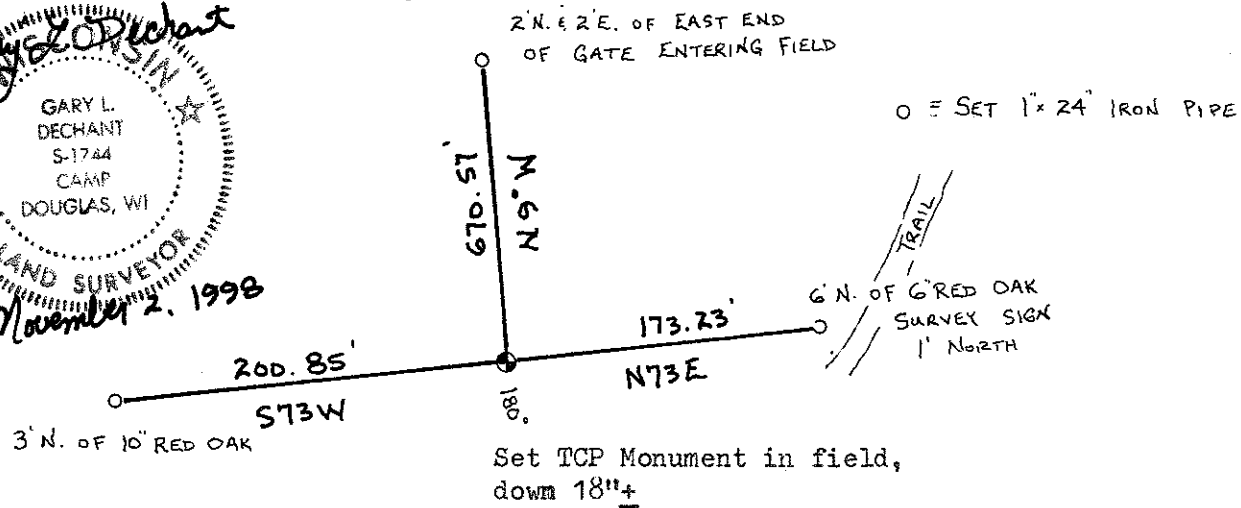
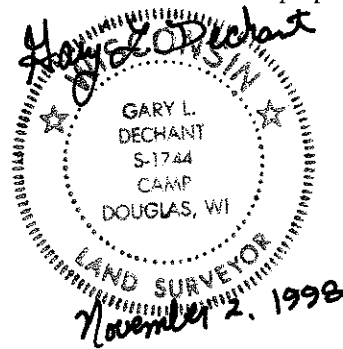
Description of corner evidence found:

Set corner at computed location between section corners as per section summary dated Jan. 1980 by H.A. Sime & Associates.

Description of corner and witness monuments, references and accessories used to perpetuate the original or re-established location of this corner:

Witnesses to corner location:

David E. Madison
Gary L. Dechant



SURVEY CONTROL ORDER

Table with 2 rows: Horizontal, Vertical.

WISCONSIN COORDINATE SYSTEM

Table with 5 columns: Corner, East (X), North (Y), Elevation (Z), Zone. Row 1: Control Sta. Name.

City, Village or Town CLIFTON
County of MONROE

COUNTY SURVEYOR FORM NO. 1