

CERTIFICATE

CERTIFIED LAND CORNER

No. 58

41601152000

I, William C. Jung, do hereby certify that on the 28th day of March 1978, I found (evidence) (no evidence) of the W/4 corner of Section 14, T 16 N, R 1 E, Fourth Principal Meridian, and I re-established said corner according to the Wisconsin Statutes as shown and described hereon.

Dated this 22nd day of Nov. 1978.

William C. Jung, R.L.S. 1323

County Surveyor's Office

Title

History of original corner establishment:

No known recorded history since the original government survey.

Description of corner evidence found:

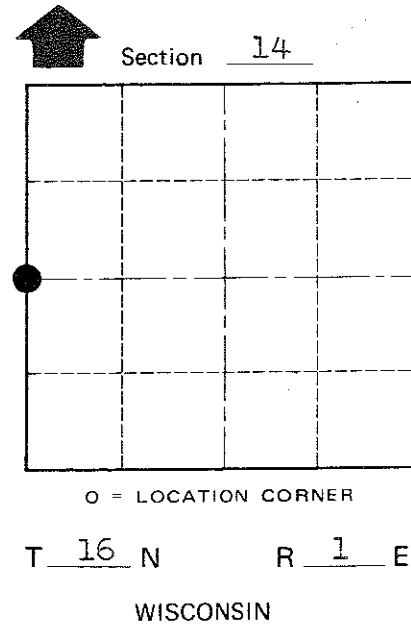
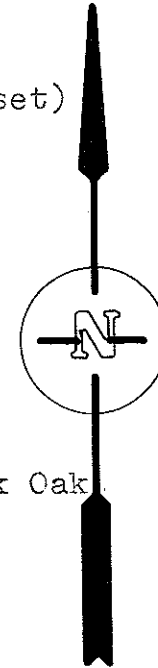
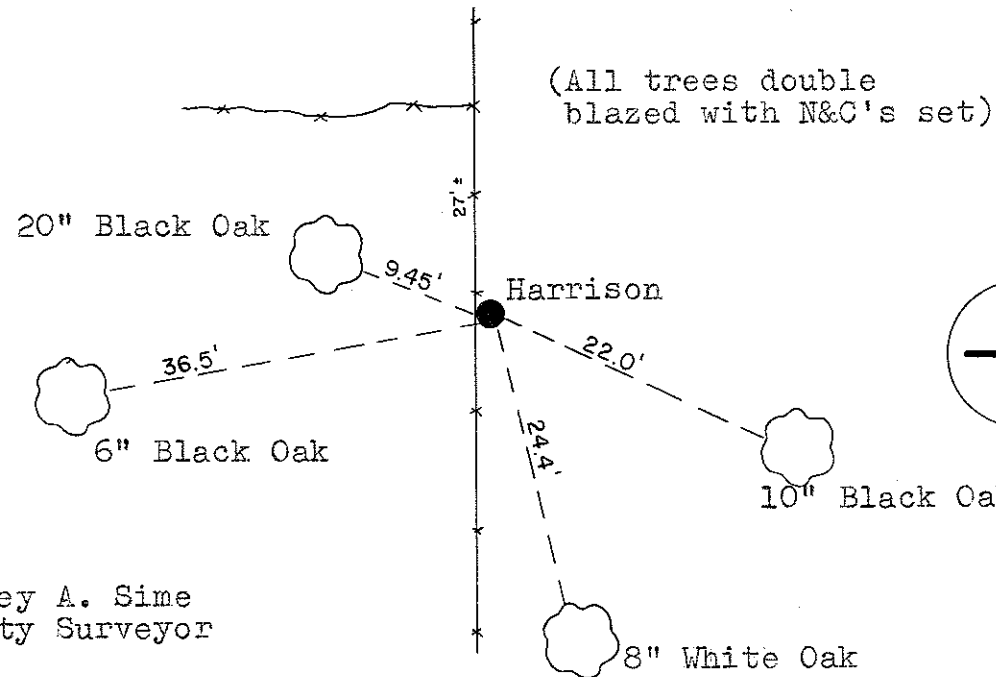
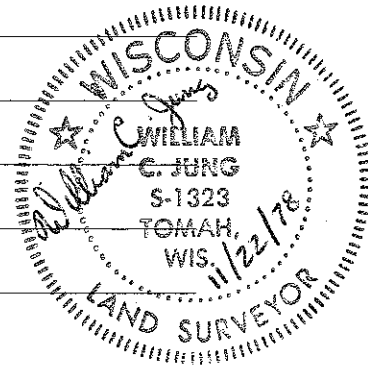
Set the corner by intersecting the occupied line along the West line of the NW1/4 with a line projected from the E1/4 through the occupied C1/4.

Description of corner and witness monuments, references and accessories used to perpetuate the original or re-established location of this corner:

Witnesses to corner location:

G. Dechant

C. Pietz



Approved by: Harley A. Sime, County Surveyor

SURVEY CONTROL ORDER

Horizontal	_____
Vertical	_____

WISCONSIN COORDINATE SYSTEM

Corner	East (X)	North (Y)	Elevation (Z)	Zone
Control Sta. Name				

City, Village or Town Clifton
County of Monroe

COUNTY SURVEYOR FORM NO. 1