

# JUNEAU COUNTY SURVEY MONUMENT RECORD

CORNER NO. 61  
SECTION 18  
TOWN 16 N.  
RANGE 2 E.

TYPE OF MONUMENT: STANDARD HARRISON MONUMENT FOUND

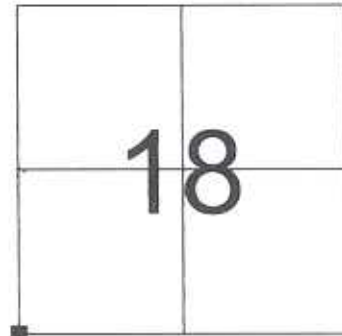
JUNEAU COUNTY COORDINATES NAD 83/91  
NORTHING: 180,793.19  
EASTING: 400,724.78

■ = CORNER MONUMENT RESTORED

BASIS FOR MONUMENT LOCATION  
(USE REVERSE SIDE IF NECESSARY)

SHOW INFO SUCH AS: HISTORY OF CORNER, WITH REFERENCE TO VOLUME AND PAGE DATES, SURVEYOR; EXACT DESCRIPTION OF MONUMENT PLACED OR FOUND, IF LOCATION COMPUTED, BY TAPED OR EDM TRAVERSE, LANDOWNER REMARKS, ETC.

STANDARD HARRISON MONUMENT FOUND AS PER TIE SHEET DATED 7/30/91 BY GARY DECHANT.



LOCATION

## LEGEND

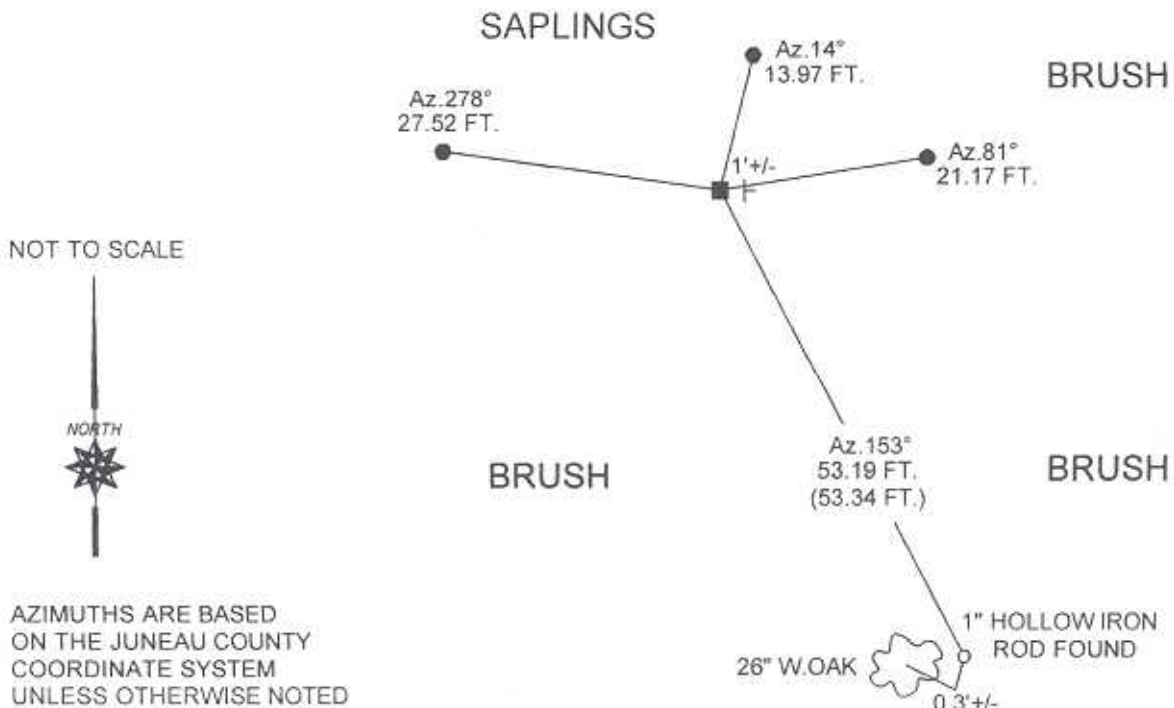
- = STANDARD HARRISON MONUMENT FOUND
  - = 3/4" X 24" IRON ROD SET
  - λ = GOVERNMENT SIGN
- AZIMUTHS ARE MAGNETIC



CERTIFIED CORRECT

*Patrick J. Dederich*  
REGISTERED LAND SURVEYOR  
DATE 12/4/2007

TIE SKETCH  
(SHOW AT LEAST FOUR TIES)



CERTIFICATE

CERTIFIED LAND CORNER

No. 61

41601130000

I, Gary L. Dechant, do hereby certify that on the 24th day of July 19 91, I found (evidence) (~~was with me~~) of the SE corner of Section 13, T 16 N, R 1 E Fourth Principal Meridian, and I re-established said corner according to the Wisconsin Statutes as shown and described hereon.

Dated this 30th day of July 19 91.

Gary L. Dechant

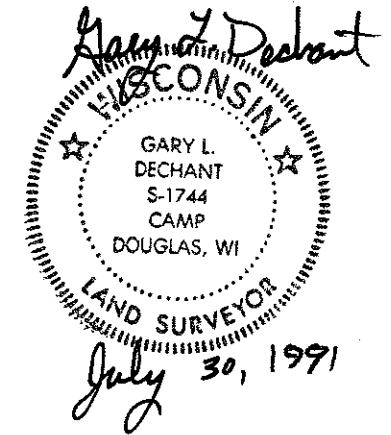
Reg. Land Surveyor, S-1744  
Title

History of corner establishment since Original Government Survey

No known history since the original government survey.

Description of corner evidence found:

Found unrecorded 1" hollow iron bar at fence corner in pile of stones. This may be the same stones as referred to in the original notes. Accepted unrecorded iron bar as the corner.

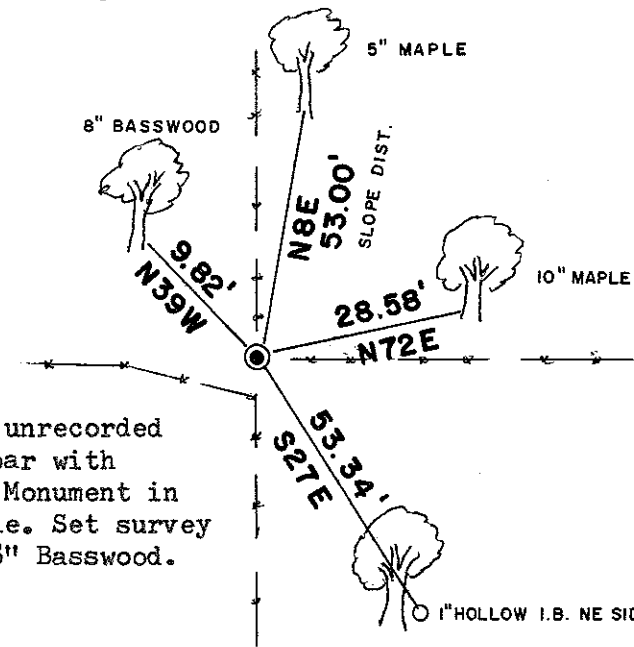


Description of corner and witness monuments, references and accessories used to perpetuate the original or re-established location of this corner:

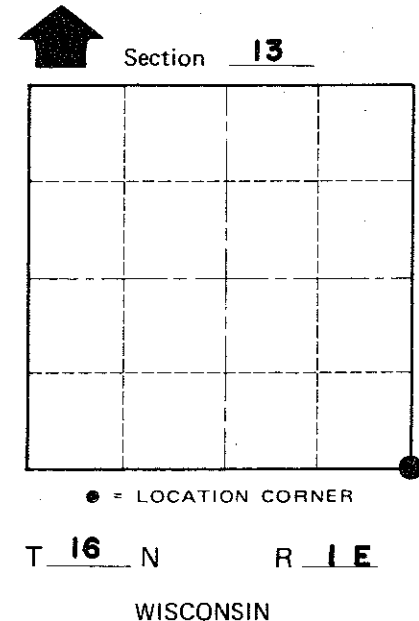
Witnesses to corner location:

Zachariah P. Dechant

Gary L. Dechant



Replaced unrecorded 1" iron bar with Harrison Monument in stone pile. Set survey sign at 8" Basswood.



COUNTY SURVEYOR FORM NO. 1

SURVEY CONTROL ORDER

Horizontal \_\_\_\_\_  
Vertical \_\_\_\_\_

WISCONSIN COORDINATE SYSTEM

Corner	East (X)	North (Y)	Elevation (Z)	Zone
Control Sta. Name				

(All trees double blazed with railroad spikes set except for 24" white oak has no spike)

City, Village or Town CLIFTON

County of MONROE