

JUNEAU COUNTY SURVEY MONUMENT RECORD

CORNER NO. 34
SECTION 7
TOWN 16 N.
RANGE 2 E.

TYPE OF MONUMENT: MONROE COUNTY TCP MONUMENT

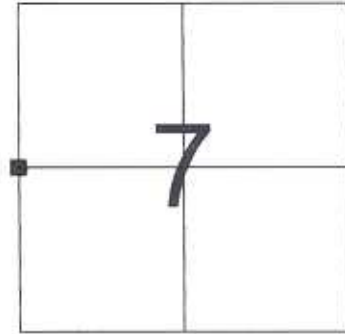
JUNEAU COUNTY COORDINATES NAD 83/91
NORTHING: 188,697.96
EASTING: 400,718.27

■ = CORNER MONUMENT RESTORED

BASIS FOR MONUMENT LOCATION
(USE REVERSE SIDE IF NECESSARY)

SHOW INFO SUCH AS: HISTORY OF CORNER, WITH REFERENCE TO VOLUME AND PAGE DATES, SURVEYOR; EXACT DESCRIPTION OF MONUMENT PLACED OR FOUND, IF LOCATION COMPUTED, BY TAPED OR EDM TRAVERSE, LANDOWNER REMARKS, ETC.

TCP MONUMENT FOUND AS PER TIE SHEET DATED 5/10/93 BY GARY L. DECHANT.



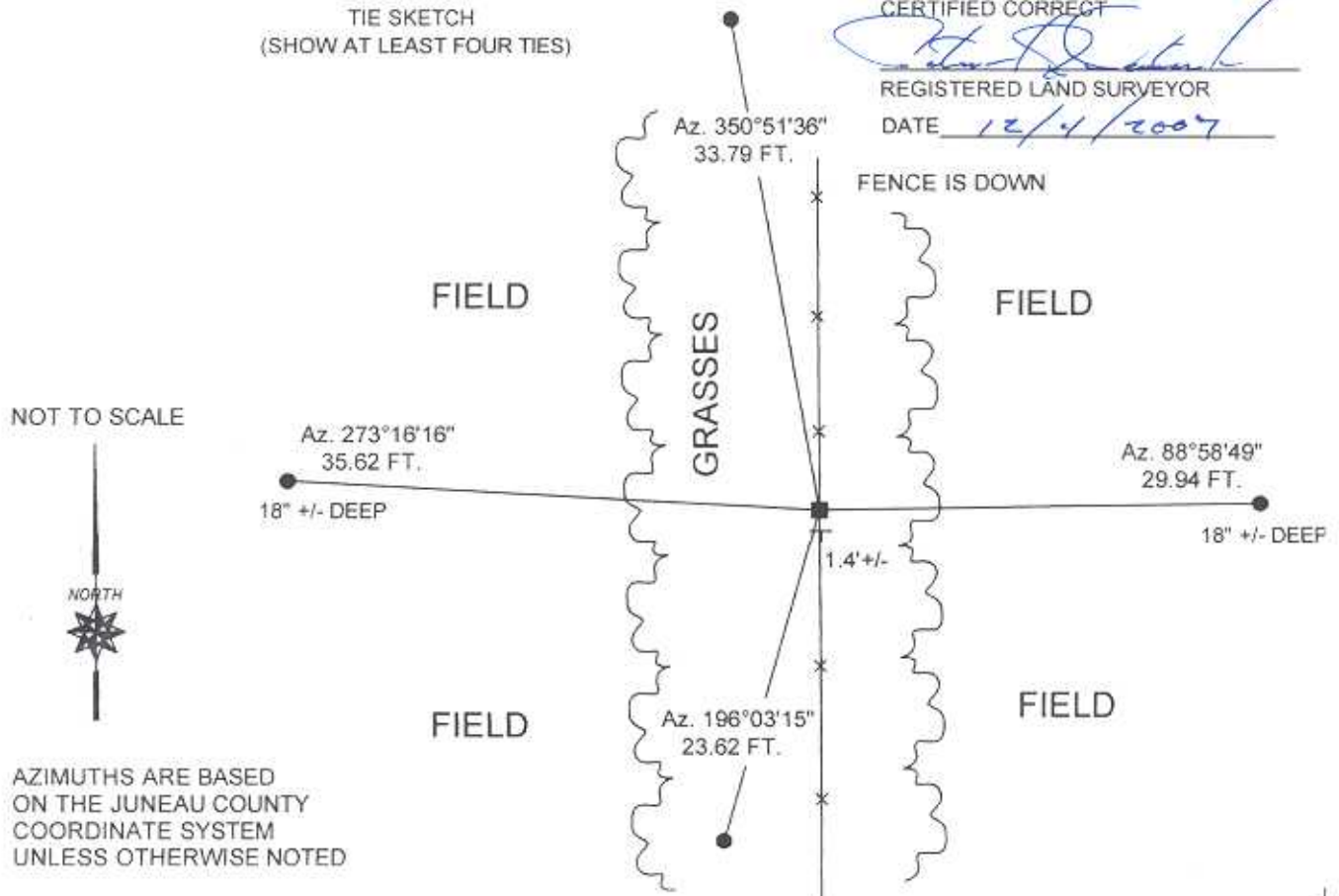
LOCATION



LEGEND

- = MONROE COUNTY TCP MONUMENT FOUND
- = 3/4" X 24" IRON ROD SET
- ✕ = GOVERNMENT SIGN

TIE SKETCH
(SHOW AT LEAST FOUR TIES)



CERTIFIED CORRECT

REGISTERED LAND SURVEYOR

DATE 12/4/2007

JUNEAU COUNTY SURVEY MONUMENT RECORD

CORNER NO. 34
SECTION 7
TOWN 16 N.
RANGE 2 E.

TYPE OF MONUMENT: MONROE COUNTY TCP MONUMENT

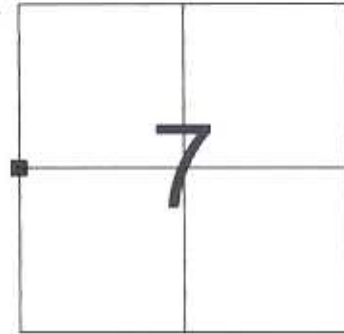
JUNEAU COUNTY COORDINATES NAD 83/91
NORTHING: 188,697.96
EASTING: 400,718.27

■ = CORNER MONUMENT RESTORED

BASIS FOR MONUMENT LOCATION
(USE REVERSE SIDE IF NECESSARY)

SHOW INFO SUCH AS: HISTORY OF CORNER, WITH REFERENCE TO VOLUME AND PAGE DATES, SURVEYOR: EXACT DESCRIPTION OF MONUMENT PLACED OR FOUND, IF LOCATION COMPUTED, BY TAPED OR EDM TRAVERSE, LANDOWNER REMARKS, ETC.

TCP MONUMENT FOUND AS PER TIE SHEET DATED 6/11/84 BY JAMES CARROLL. (HARRISON CALLED FOR.)



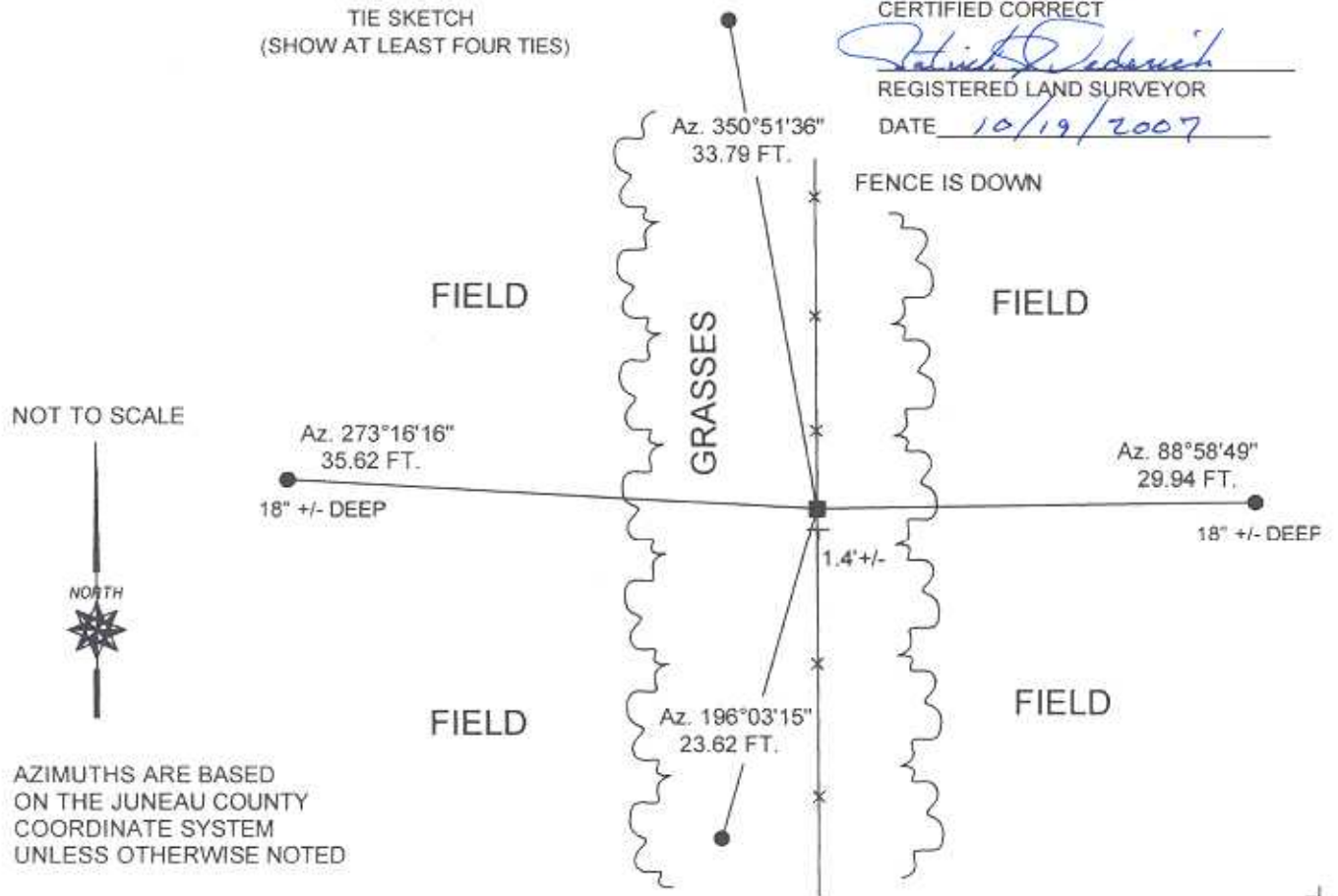
LOCATION



LEGEND

- = MONROE COUNTY TCP MONUMENT FOUND
- = 3/4" X 24" IRON ROD SET
- λ = GOVERNMENT SIGN

TIE SKETCH
(SHOW AT LEAST FOUR TIES)



CERTIFIED CORRECT

Patrick J. Dederich

REGISTERED LAND SURVEYOR

DATE 10/19/2007

JUNEAU COUNTY

Survey Monument Record

TYPE OF MONUMENT: HARRISON

STATE PLANE COORDINATES: N _____
E _____

ELEVATION — M.S.L. DATUM: _____

THETA ANGLE: _____

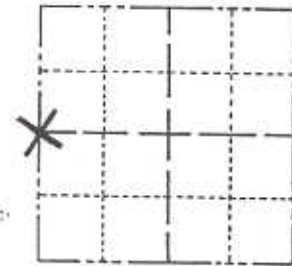
FIELD BOOK: _____ PAGE _____

CORNER NO. _____

SECTION 7

TOWN 16

RANGE 2E



LOCATION
(Indicated by 'X')

SEAL:

BASIS FOR MONUMENT LOCATION

(Use reverse side if necessary)

Show info such as: History of corner, with reference to Vol. and pg. dates; surveyor; exact description of monument replaced; if location computed, by taped or EDM traverse; landowner remarks, etc.

An extensive EDM traverse was run from the west county line to New Lisbon for the proposed R/W Plat for the relocation of C.T.H. "A".

This Harrison was found in place, placed by this Surveyor for a survey done some time ago in Monroe County.

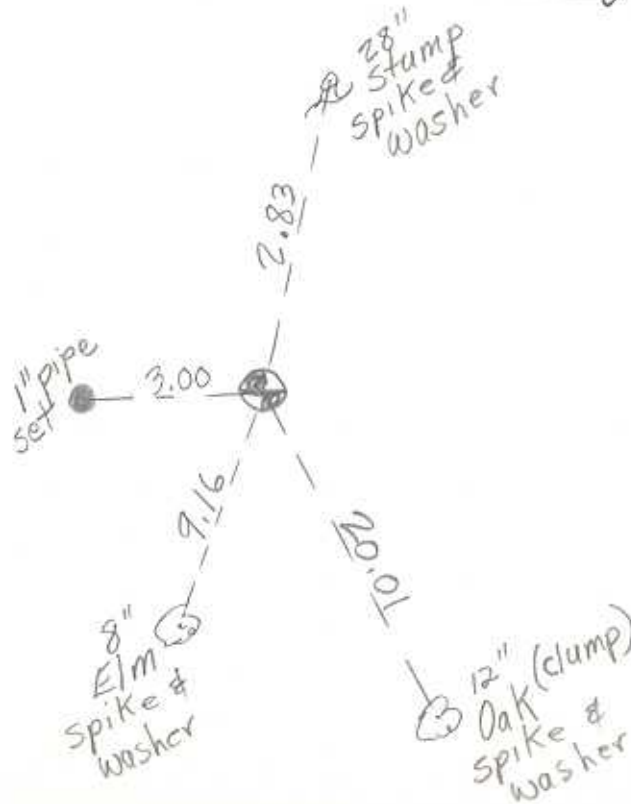


CERTIFIED CORRECT:

James J. Carroll
Registered Land Surveyor
DATE: June 11, 1984

TIE SKETCH

(Show at least four ties)



JUNEAU COUNTY

Survey Monument Record

TYPE OF MONUMENT: HARRISON

STATE PLANE COORDINATES: N _____

E _____

ELEVATION — M.S.L. DATUM: _____

THETA ANGLE: _____

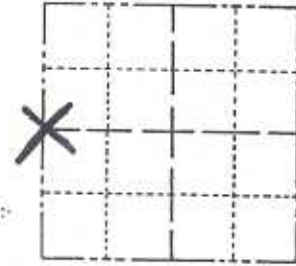
FIELD BOOK: _____ PAGE _____

CORNER NO. _____

SECTION 7

TOWN 16N

RANGE 2E



LOCATION
(Indicated by 'X')

SEAL:



BASIS FOR MONUMENT LOCATION

(Use reverse side if necessary)

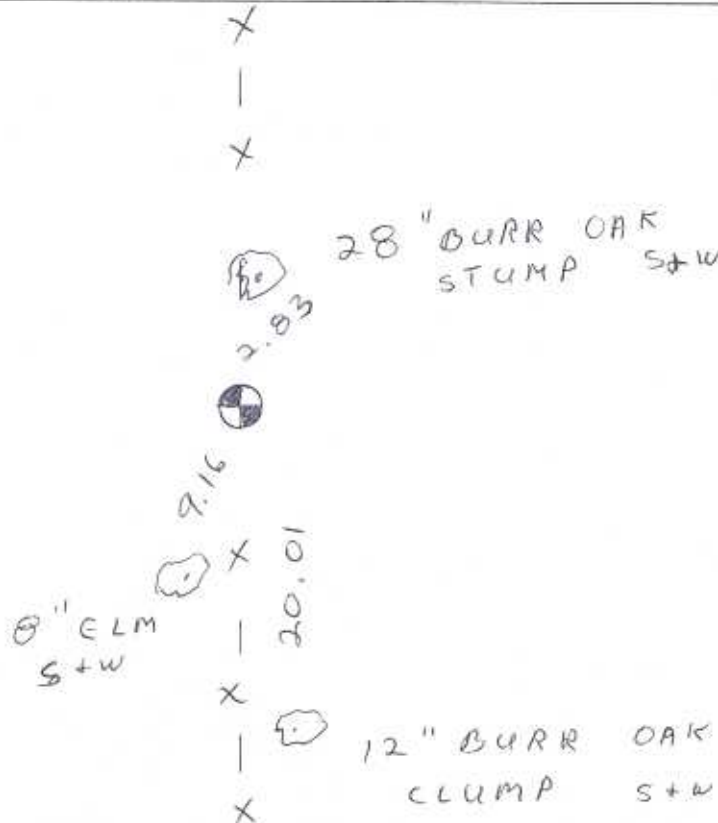
Show info such as: History of corner, with reference to Vol. and pg. dates, surveyor; exact description of monument replaced; if location computed, by taped or EDM traverse; landowner remarks, etc.

REPLACED 8" SPIKE @ old
corner post.
Accepted as the
corner location

CERTIFIED CORRECT:
James J. Carroll
Registered Land Surveyor
DATE: 4/21/84

TIE SKETCH

(Show at least four ties)



41601122000

I, Gary L. Dechant, do hereby certify that on the 7th day of May 19 93, I found (evidence) (~~no evidence~~) of the E/4 corner of Section 12, T 16 N, R 1 E Fourth Principal Meridian, and I re-established said corner according to the Wisconsin Statutes as shown and described hereon.

Dated this 10th day of May 19 93.

Gary L. Dechant

R.L.S. 1744
Title

History of corner establishment since Original Government Survey

No known history since the original government survey from Monroe County survey records. Juneau County Survey records show a survey by J. L. Heath in October of 1862, of Section 7, T16N-R2E, and indicating he may have been at this corner.

J. Carroll was here in June of 1984 and in an earlier survey date.

Description of corner evidence found:

Set this corner in the existing north-south fence lines half way between section corners. This location fits other field evidence extremely well. The C/4 corner of Section 12, T16N-R1E, falls 2' south of the occupied corner. The NE corner of the SE/4-NE/4 of said Section 12, would fit the occupied fence running west within 3'+. The C/4 and the NW corner of the NE/4-SE/4 of Section 7, T16N-R2E, fits the fence line running east-west, virtually perfect.

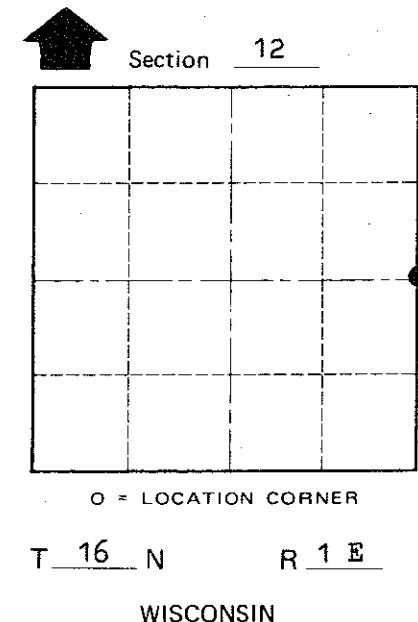
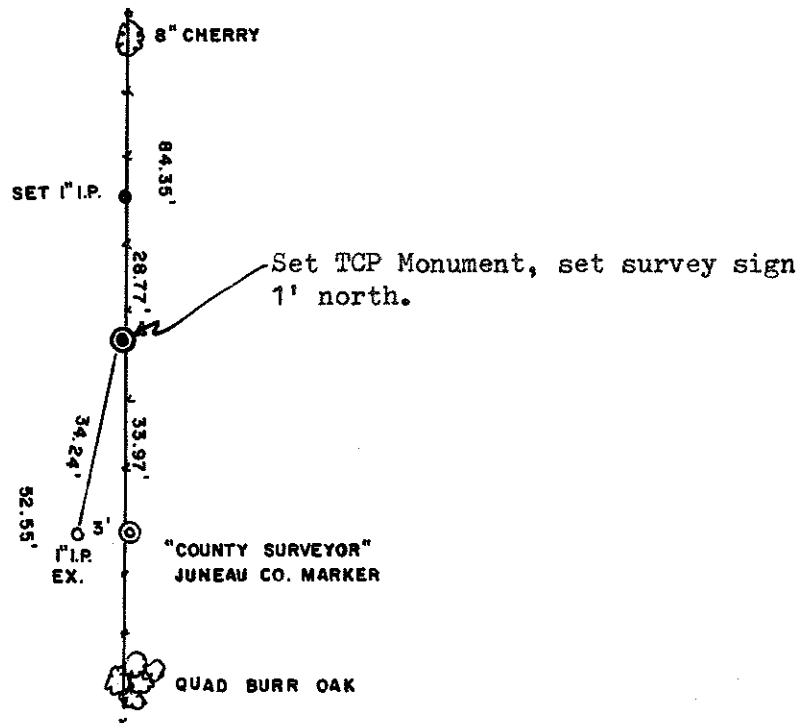
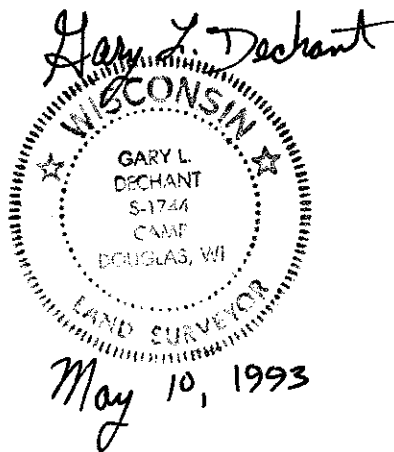
Set TCP County Monument as the E/4 corner of Section 12, T16N-R1E.

Description of corner and witness monuments, references and accessories used to perpetuate the original or re-established location of this corner:

Witnesses to corner location:

David E. Madison

Gary L. Dechant



COUNTY SURVEYOR FORM NO. 1

SURVEY CONTROL ORDER

Horizontal	_____
Vertical	_____

WISCONSIN COORDINATE SYSTEM

Corner	East (X)	North (Y)	Elevation (Z)	Zone
Control Sta. Name				

~~City, Village~~ Town Clifton
County of Monroe