

41601100020

I, Harley A. Sime, do hereby certify that on the 10th day of September 1979, I found (evidence) ~~(no evidence)~~ of the South 1/4 corner of Section 10, T 16 N, R 1 E, Fourth Principal Meridian, and I re-established said corner according to the Wisconsin Statutes as shown and described hereon.

Dated this 17th day of Feb. 1981.

**Approved: HARLEY A. SIME**  
**MONROE CO. SURVEYOR**  
Title

History of original corner establishment:

Duane Marten set a Harrison marker at the occupied fence corner in June of 1972. Gary Sime used this corner in a July, 1976 survey.

Description of corner evidence found:

Found a Harrison marker at the corner.

UPDATE: Found existing Harrison monument at this corner location in poor condition. The top 4" were broken off and was in the ground only 9"±. One of the previous bearing trees was still standing, but was in an advanced state of decay and the nail & cap was missing. The damaged Harrison was replaced with a more substantial monument as noted below.

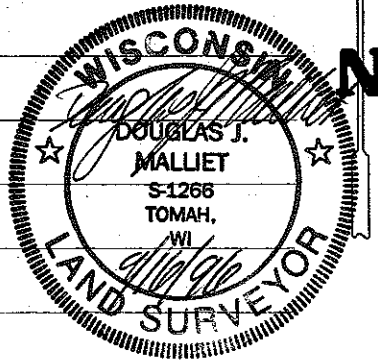
Douglas J. Malliet, R.L.S. #1266  
 16 September 1996

Description of corner and witness monuments, references and accessories used to perpetuate the original or re-established location of this corner:

Witnesses to corner location:

Pietz

Termoen



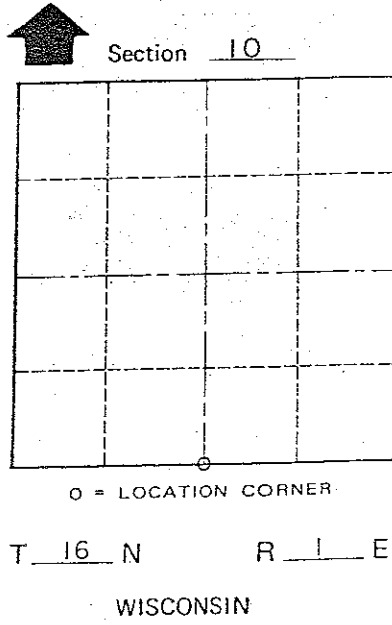
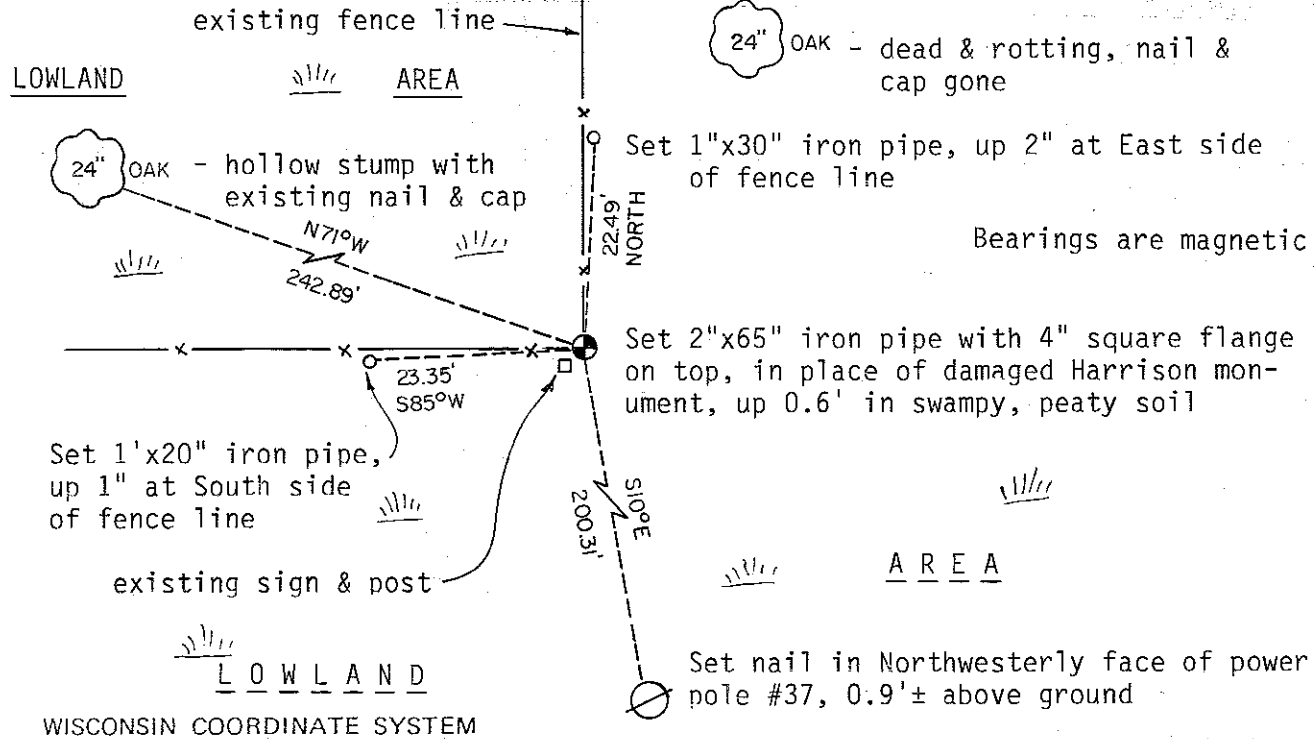
CREW: Douglas J. Malliet, R.L.S.  
 Tim Wilson

9-16-96

SURVEY CONTROL ORDER

Horizontal	_____
Vertical	_____

Corner	East (X)	North (Y)	Elevation (Z)	Zone
Control Sta. Name				



COUNTY SURVEYOR FORM NO. 4

or Town Clifton  
 County of Monroe

4434

CERTIFICATE

CERTIFIED LAND CORNER

No. 46

I, Harley A. Sime, do hereby certify that on the 10th day of September 1979, I found (evidence) ~~(no evidence)~~ of the South 1/4 corner of Section 10, T 16 N, R 1 E, Fourth Principal Meridian, and I re-established said corner according to the Wisconsin Statutes as shown and described hereon.

History of original corner establishment:

Duane Marten set a Harrison marker at the occupied fence corner in June of 1972. Gary Sime used this corner in a July, 1976 survey.

Description of corner evidence found:

Found a Harrison marker at the corner.

Dated this 17th day of Feb. 1981.

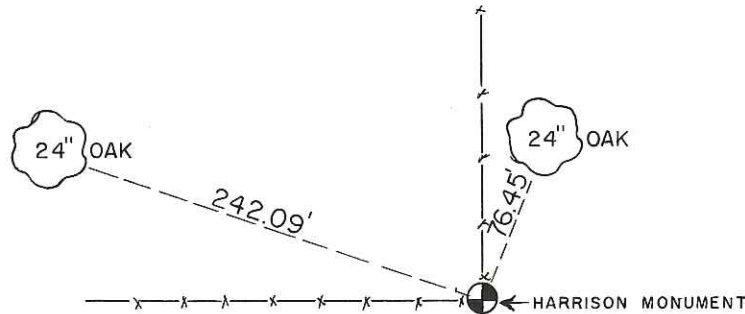
**Approved: HARLEY A. SIME**  
**MONROE CO. SURVEYOR**  
Title

COUNTY SURVEYOR FORM NO. 1

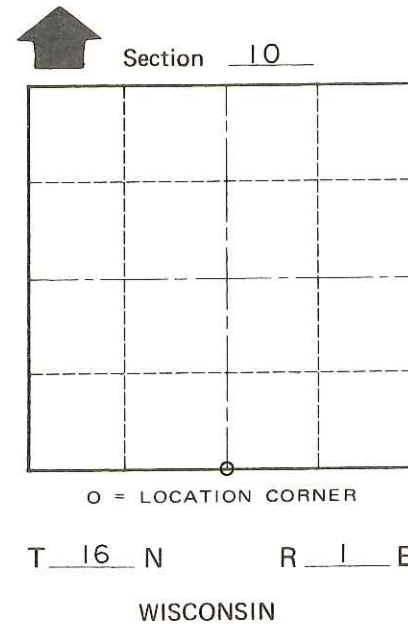
Description of corner and witness monuments, references and accessories used to perpetuate the original or re-established location of this corner:

Witnesses to corner location:

Pietz  
Tormoen



NOTE: TREES BLAZED WITH NAIL & CAP SET



SURVEY CONTROL ORDER

Horizontal	_____
Vertical	_____

WISCONSIN COORDINATE SYSTEM

Corner	East (X)	North (Y)	Elevation (Z)	Zone
Control Sta. Name				

or Town Clifton  
County of Monroe