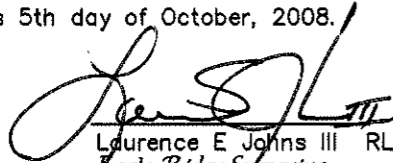


CERTIFICATE

I, Laurence E Johns III, do hereby certify that on the 4th day of October, 2008, I found evidence of the S 1/4 corner of Section 9, T16N, R1E, Fourth Principle Meridian, and I re-established said corner according to the Wisconsin Statutes as shown and described hereon.

Dated this 5th day of October, 2008.



Laurence E Johns III RLS 2804
Eagle Ridge Surveying
PO Box 213
Wilton, WI 54670

CERTIFIED LAND CORNER

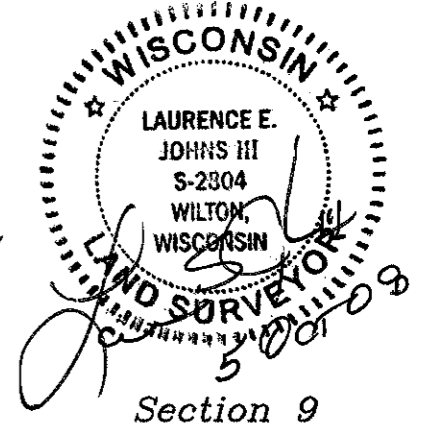
#41601090020 No. 48 (2)

History of corner establishment since Original Government Survey

Gary Sime set a Harrison Monument at this corner in Jan 1980.
Jim Carroll was here in Apr 1989 and found no monument.
Patrick Carroll was here in Sep 2004 and used the information from the Section Summary in determining the location of the corner.
Gary Dechant was here in Dec 2006. He computed a location based off of other survey information and set the '40' Corner west of this location.
Dwayne Hefner was here in May 2008 and also used the information on the Section Summary in determining the location of the corner.

Description of corner evidence found:

Gary Sime's tie sheet calls for the location to be on the east side of a driveway. That driveway is now a town road. It is my belief that the Harrison monument was destroyed during the construction of the town road. Only one tie is remaining from the original tie sheet. Used Gary Dechant's '40' Corner and the SW Corner of Section 9 to re-establish this corner. It fit very well with the existing tie.



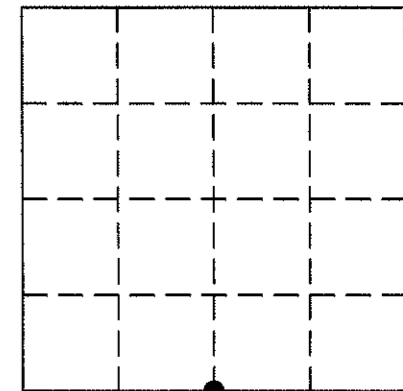
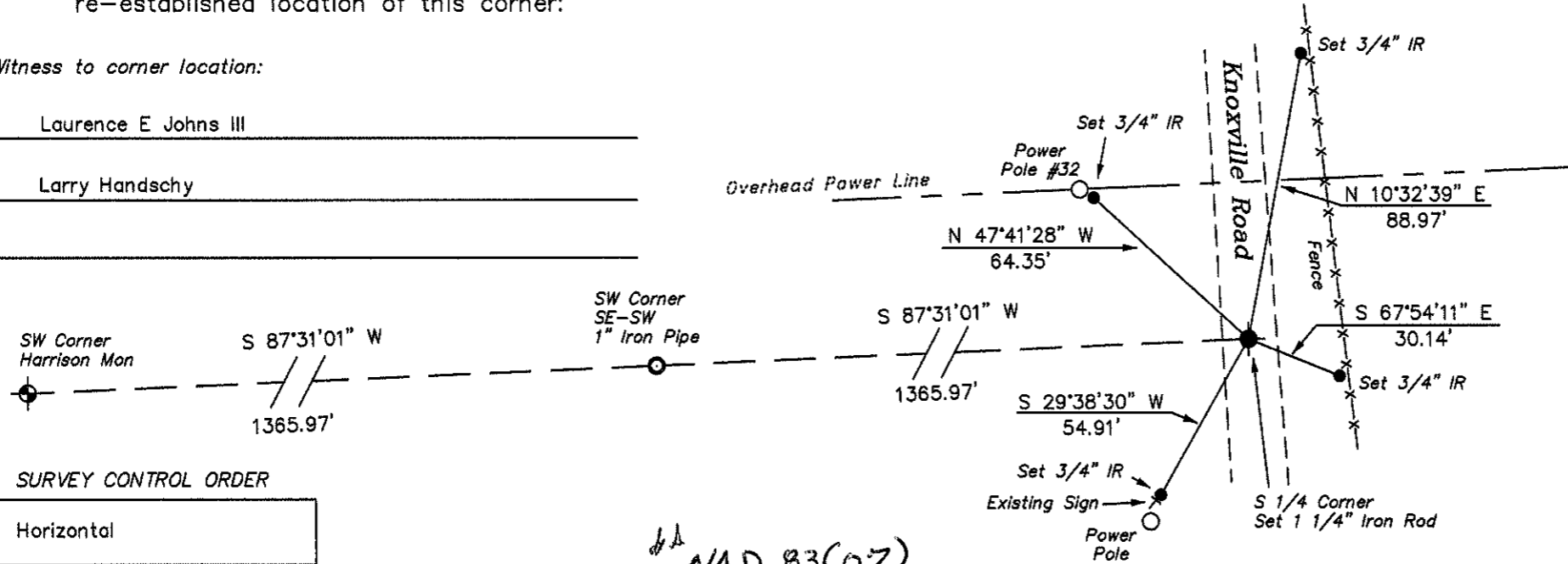
COUNTY SURVEYOR FORM NO. 1

Description of corner and witness monuments, references and accessories used to perpetuate the original or re-established location of this corner:

Witness to corner location:

Laurence E Johns III

Larry Handschy



● = LOCATION CORNER
T16N R1E
WISCONSIN

SURVEY CONTROL ORDER

Horizontal
Vertical

NAD 83(07)
MONROE COUNTY COORDINATE SYSTEM

41601090020 Corner	North (Y) 353854.142	East (X) 739480.607	Elevation (Z)	Zone
Control Sta. Name 12-161E	356164.059	755160.517		

City, Village or Town Clifton
County of Monroe

I, Garold A. Sime, do hereby certify that on the 5th day of January 1980, I found (evidence) (no evidence) of the N¹/₄ corner of Section 16, T 16 N, R 1 E Fourth Principal Meridian, and I re-established said corner according to the Wisconsin Statutes as shown and described hereon.

Dated this 28th day of Jan. 1980.

Garold A. Sime, R.L.S. 1261

County Surveyor's Office
Title

History of corner establishment since Original Government Survey

No known history since the original government survey.

Description of corner evidence found:

Set Harrison Monument off of survey points and computations done by G. Sime in February of 1977.

Description of corner and witness monuments, references and accessories used to perpetuate the original or re-established location of this corner:

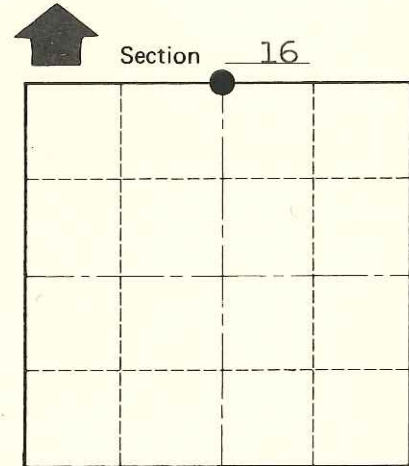
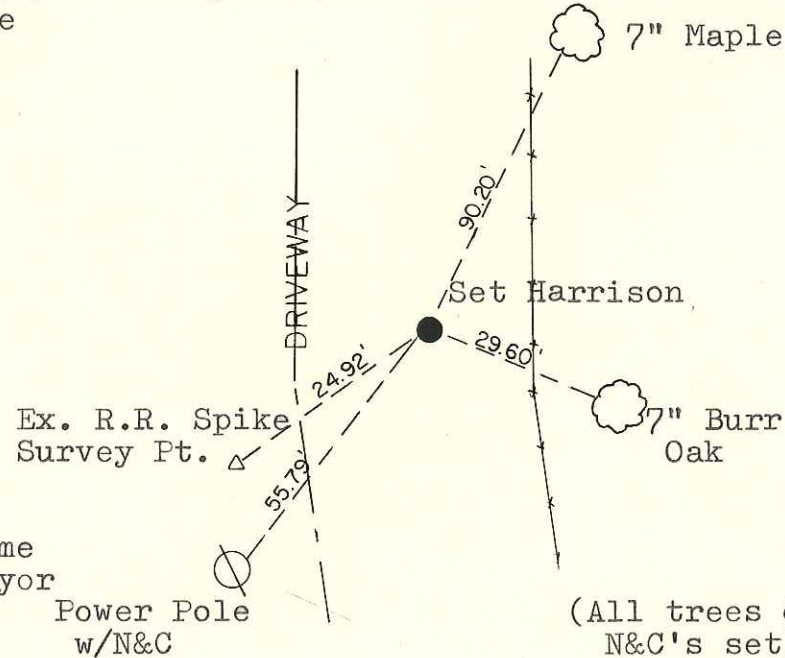
Set Harrison Monument flush, set bottle with note on East side of Harrison.

Witnesses to corner location:

G. Dechant

B. Meyer

T. Tormoen



● = LOCATION CORNER

T 16 N R 1 E

WISCONSIN

COUNTY SURVEYOR FORM NO. 1

**Approved: HARLEY A. SIME
MONROE CO. SURVEYOR**

Approved by: Harley A. Sime
County Surveyor

SURVEY CONTROL ORDER

Horizontal	_____
Vertical	_____

WISCONSIN COORDINATE SYSTEM

Corner	East (X)	North (Y)	Elevation (Z)	Zone
Control Sta. Name				

(All trees double blazed with N&C's set)

City, Village or Town Clifton

County of Monroe