

CERTIFICATE

CERTIFIED LAND CORNER

No. 32

41601060020

I, Gary L. Dechant, do hereby certify that on the 22nd day of October 2002, I found (evidence) (~~no evidence~~) of the S¹/₄ corner of Section 6, T 16 N, R 1 E Fourth Principal Meridian, and I re-established said corner according to the Wisconsin Statutes as shown and described hereon.

History of corner establishment since Original Government Survey

No known recorded history since the original government survey.

Description of corner evidence found:

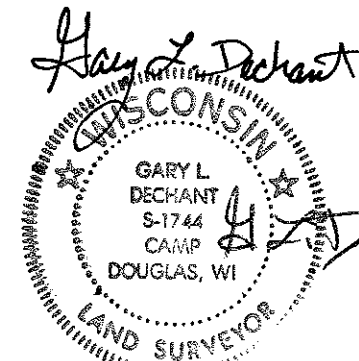
Accepted remnants of old fence corner as the S¹/₄ Corner of Section 6. Fits South line of section well.

Dated this 23 day of OCT. 2002.

Gary L. Dechant

R.L.S. 1744

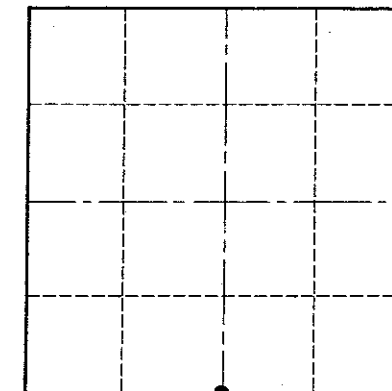
Title



October 23, 2002



Section 6



● = LOCATION CORNER

T 16 N R 1 E

WISCONSIN

Trees double blazed with 40d nail set.

City, Village or Town CLIFTON

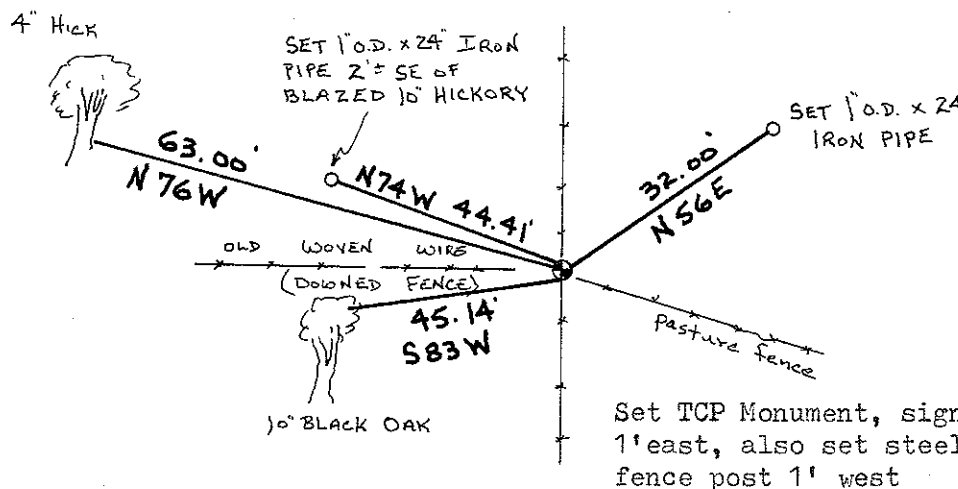
County of MONROE

Description of corner and witness monuments, references and accessories used to perpetuate the original or re-established location of this corner:

Witnesses to corner location:

Zachariah P. Dechant

Gary L. Dechant



Set TCP Monument, sign 1' east, also set steel fence post 1' west

SURVEY CONTROL ORDER

Horizontal	_____
Vertical	_____

WISCONSIN COORDINATE SYSTEM

Corner	East (X)	North (Y)	Elevation (Z)	Zone
Control Sta. Name				

COUNTY SURVEYOR FORM NO. 1