

17

**U.S. PUBLIC LAND CORNER
MAINTENANCE**

**Corner ID : E1/4 Sec.4, T16N-R1E
41601042000**

<u>DATE</u>	<u>CREW</u>	<u>MONUMENT TYPE</u> -----
March 4, 2019	Zachariah P.Dechant Gary L. Dechant	Existing Harrison intact, 1' west of stone. Sign 1.5' south

References:

	<u>Bearing</u>	<u>Distance</u>
1) Set 24" section of steel fence post (T-post), 4' SW of 12" White Pine	N33E	17.40'
2) Set 24" section of steel fence post, 4' west of 6" White Pine	N80E	20.92'
3) Set 24" section of steel fence post, 2' south & 3' west of fence corner	S54E	13.36'
4) Set 24" section of steel fence post, 4' south of 28" Maple (1984 BT)	S26W	24.53'



I, RONALD D. PARISH, do hereby certify that on the 7th day of MAY 1984, I found ~~(evidence)~~ (no evidence) of the EY4 corner of SECTION 4, T. 16 N, R. 1 E Fourth Principal Meridian, and I re-established said corner according to the Wisconsin Statutes as shown and described hereon.

Dated this 21ST day of MAY 1984.

Ronald D. Parish
Registered Land Surveyor
Title

History of corner establishment since Original Government Survey
NO RECORDED HISTORY SINCE ORIGINAL SURVEY

Description of corner evidence found:

SET CORNER BY PROPORTIONATE MEASURE ON LINE BETWEEN NE COR. & SE COR. THIS FITS THE OCCUPATION REASONABLY WELL.

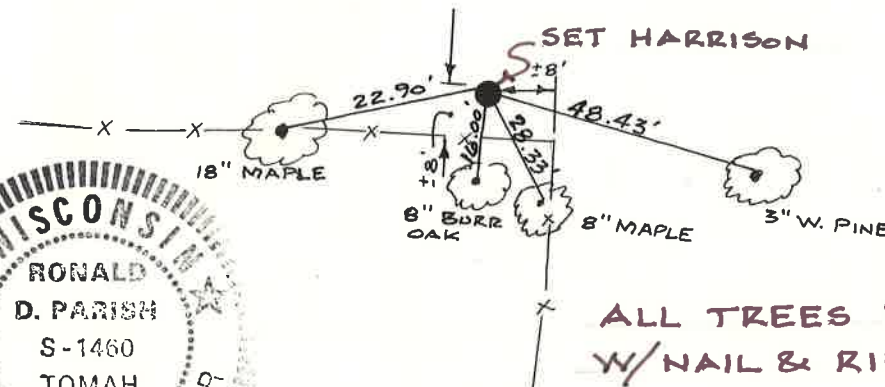
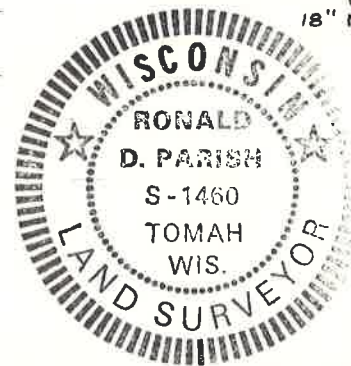
See Reverse Side For Maintenance

Description of corner and witness monuments, references and accessories used to perpetuate the original or re-established location of this corner:

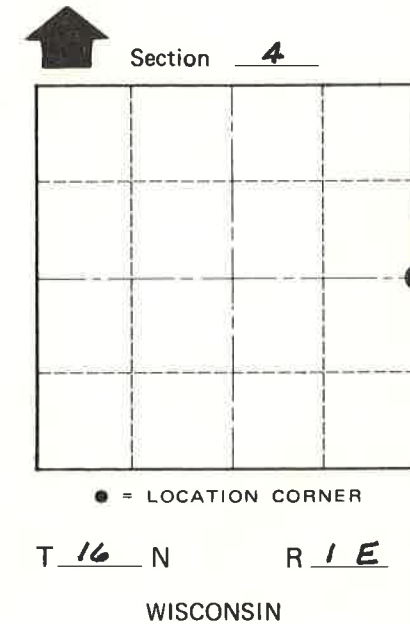
Witnesses to corner location:

RONALD PARISH

CHARLES DADE



ALL TREES BLAZED W/ NAIL & RIBBON



SURVEY CONTROL ORDER

Horizontal				
Vertical				
Corner	East (X)	North (Y)	Elevation (Z)	Zone
Control Sta. Name				

City, Village or Town CLIFTON

County of MONROE

COUNTY SURVEYOR FORM NO. 1