

JUNEAU COUNTY SURVEY MONUMENT RECORD

CORNER NO. 21
SECTION 12
TOWN 16 N.
RANGE 2 E.

TYPE OF MONUMENT: STANDARD HARRISON MONUMENT FOUND

JUNEAU COUNTY COORDINATES NAD 83/91
NORTHING: 191,323.79
EASTING: 400,695.01

■ = CORNER MONUMENT RESTORED

BASIS FOR MONUMENT LOCATION
(USE REVERSE SIDE IF NECESSARY)

SHOW INFO SUCH AS: HISTORY OF CORNER, WITH REFERENCE TO VOLUME AND PAGE DATES, SURVEYOR; EXACT DESCRIPTION OF MONUMENT PLACED OR FOUND, IF LOCATION COMPUTED, BY TAPED OR EDM TRAVERSE; LANDOWNER REMARKS, ETC.

STANDARD HARRISON MONUMENT FOUND AS PER TIE SHEET DATED 6/9/92 BY GARY DECHANT.FOUND BLAZES. NAILS BURIED. SET NEW.



LOCATION



LEGEND

- = STANDARD HARRISON MONUMENT FOUND
 - = 3/4" X 24" IRON ROD SET
 - λ = GOVERNMENT SIGN
- AZIMUTHS ARE MAGNETIC
TREE TIES ARE 6" SPIKES

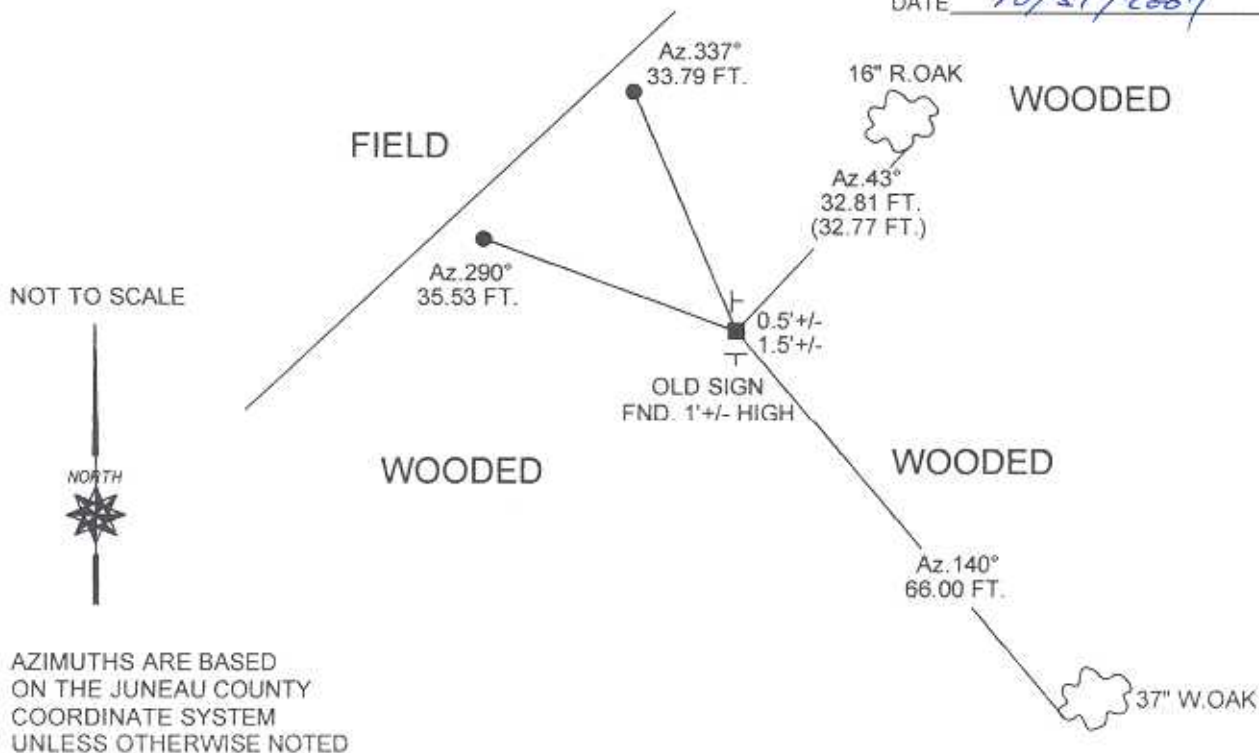
TIE SKETCH
(SHOW AT LEAST FOUR TIES)

CERTIFIED CORRECT

Patrick J. Dederich

REGISTERED LAND SURVEYOR

DATE 10/31/2007



NOT TO SCALE

NORTH

AZIMUTHS ARE BASED
ON THE JUNEAU COUNTY
COORDINATE SYSTEM
UNLESS OTHERWISE NOTED

CERTIFICATE

CERTIFIED LAND CORNER

No. 21

41601010000

I, Gary L. Dechant, do hereby certify that on the 3rd day of June 1992, I found (evidence) ~~(no evidence)~~ of the NE corner of Section 12, T 16 N, R 1 E Fourth Principal Meridian, and I re-established said corner according to the Wisconsin Statutes as shown and described hereon.

Dated this 9th day of June 1992.

Gary L. Dechant
Reg. Land Surveyor, S-1744
Title

History of corner establishment since Original Government Survey

J. L. Heath in Oct. of 1862 found original B.T. 'S as recorded in Vol.2 of the Juneau County Survey Records.

Description of corner evidence found:

Reset corner from original Bearing Tree, 10" J.O. S40E, 100 lks. Fits old fence corner.

Description of corner and witness monuments, references and accessories used to perpetuate the original or re-established location of this corner:

Witnesses to corner location:

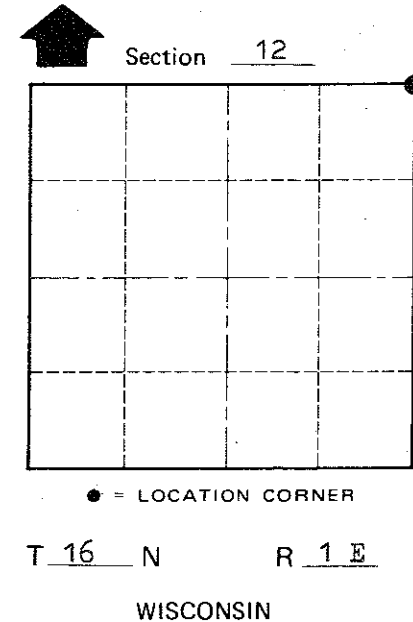
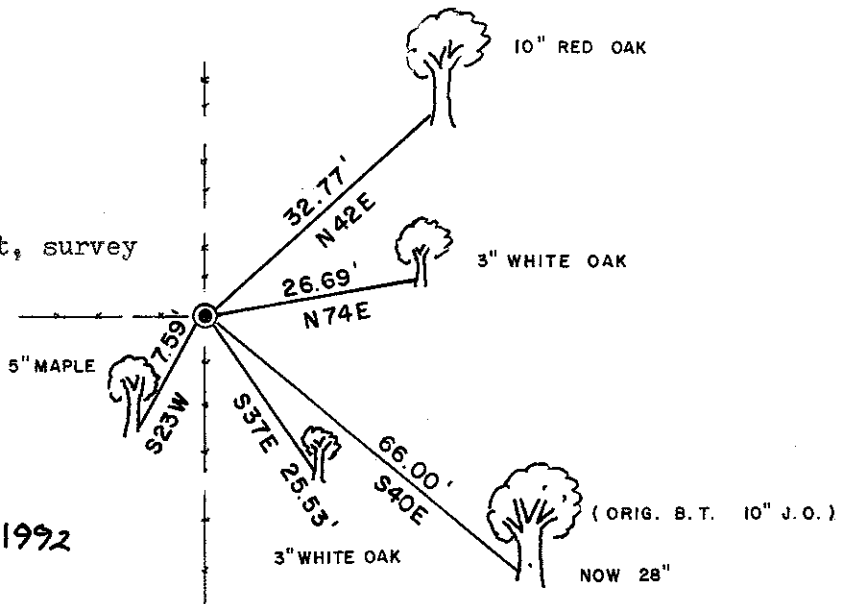
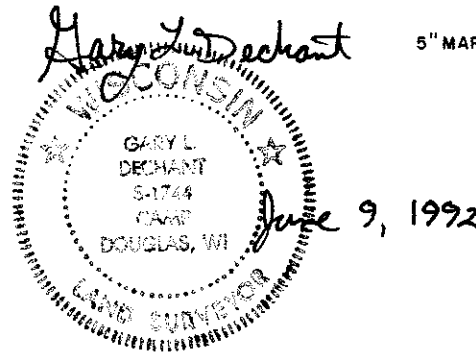
David E. Madison

Gary L. Dechant

COUNTY SURVEYOR FORM NO. 1

FIELD

Set Harrison Monument, survey sign 1' south.



(Trees double blazed with 20d nail set)

SURVEY CONTROL ORDER

Horizontal _____
Vertical _____

Corner	East (X)	North (Y)	Elevation (Z)	Zone
Control Sta. Name				

~~City, Village or~~ Town Clifton
County of Monroe