

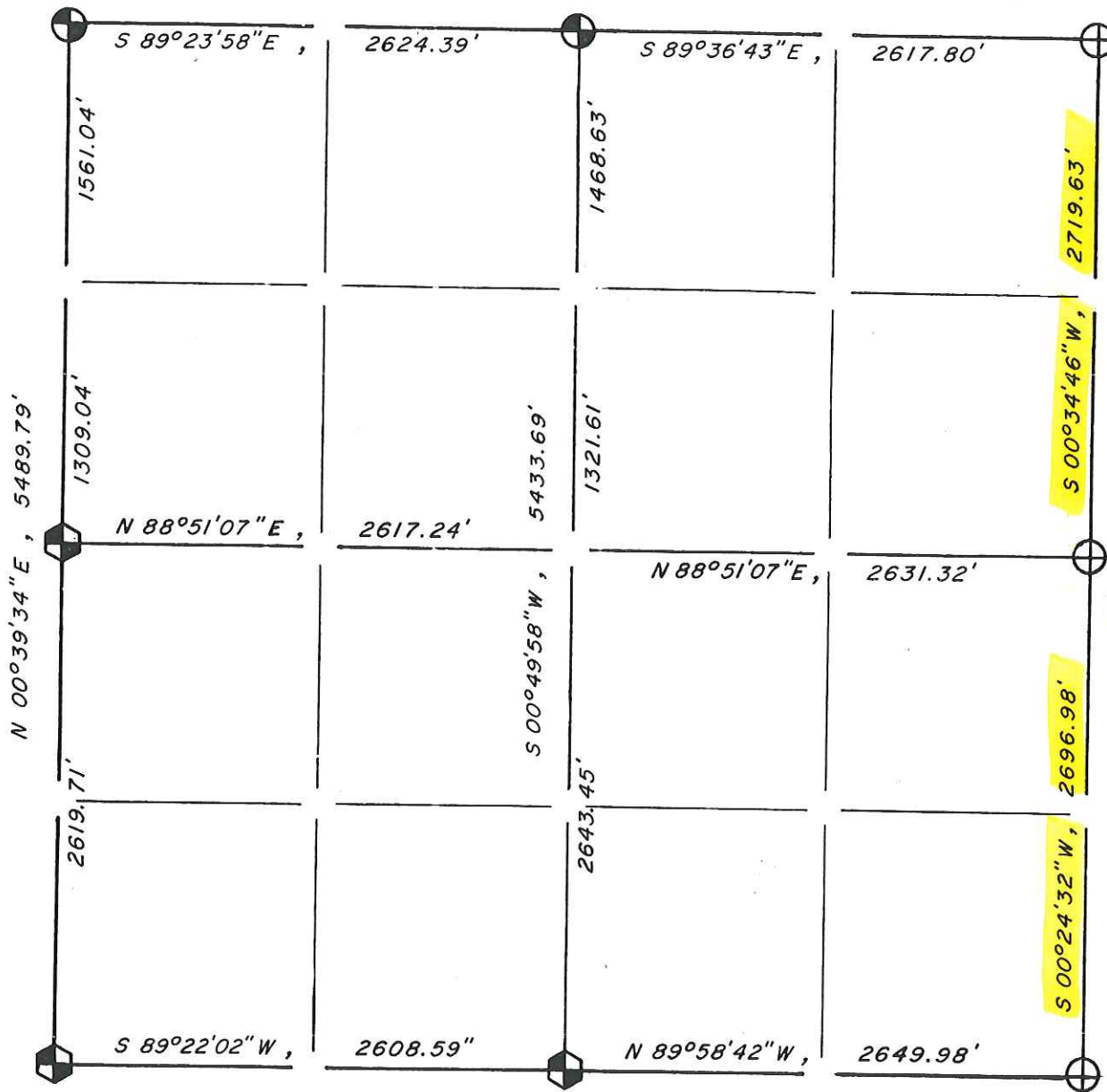
West Line Sec 6 - T15N-R4W

Section Summary and Index

1 - 15 - 5
Section Town Range

TOWN OF WASHINGTON

La Crosse County



GRID NORTH

LEGEND

(not to scale)

- ⊕ - BERNTSEN TOP monument.
- - Stone or concrete monument.
- ⊙ - Other HARRISON MARKER
- ⊗ - LUNDE MARKER

(GROUND DISTANCES)

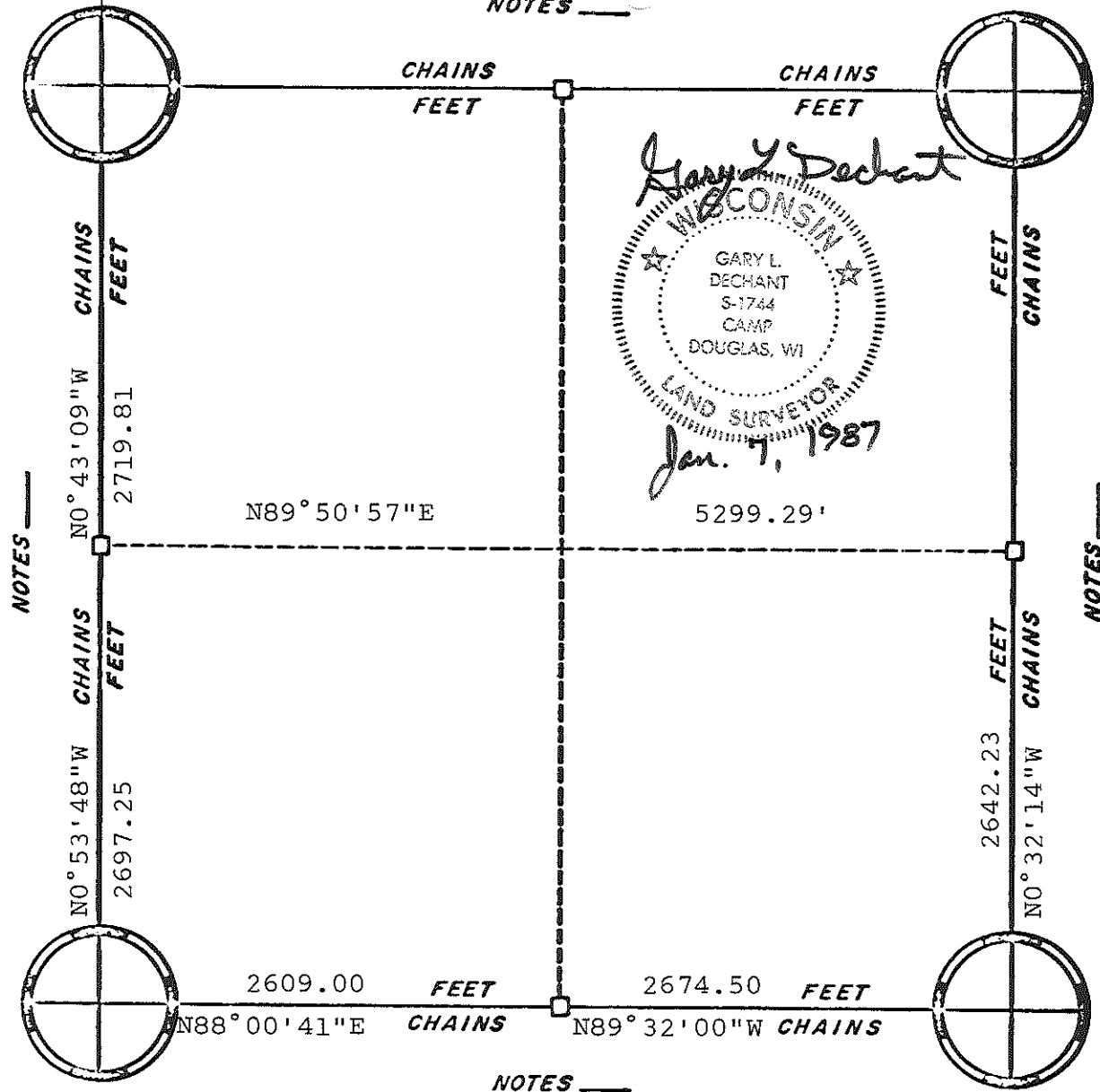


William C. Jung
 County Surveyor
 7/21/97

W 1/4 SEC. 31,
T16N - R4W

N0° 24' 59" W
2643.37'

NOTES _____

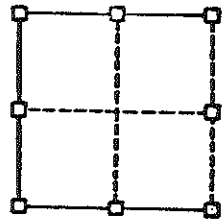


NOTES _____

NOTES _____

NOTES _____

CORNERS



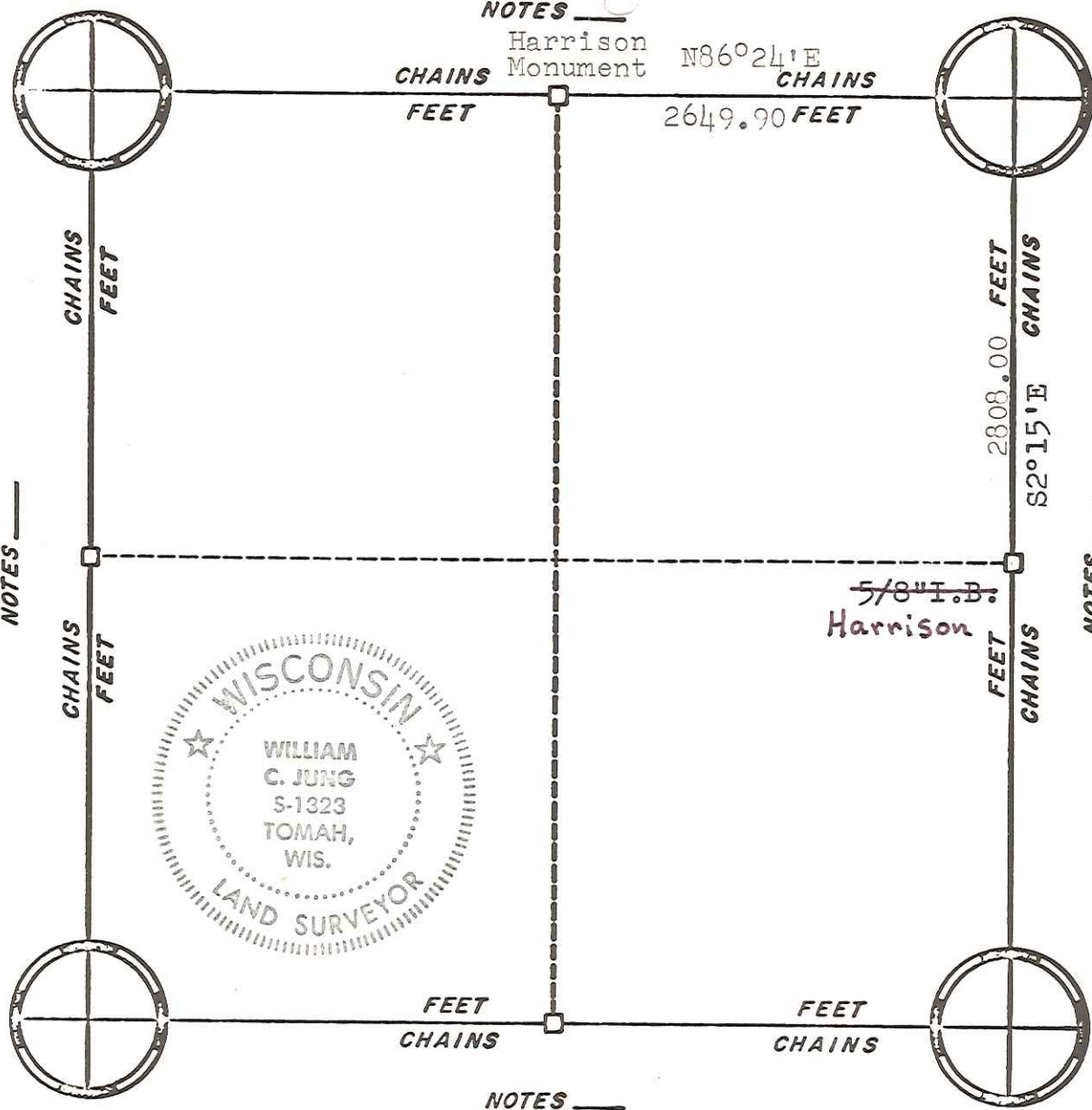
RE-ESTABLISHED

ORIGINAL SURVEY DATA

BY _____
DATE _____

SURVEYED BY	CONTRACT DATE	COUNTY MONROE	TOWN-VILLAGE-CITY	SECTION	TOWNSHIP	RANGE
Gary L. Dechant	Jan. 7, 1987		Portland	6	15N	4W

NOTES _____

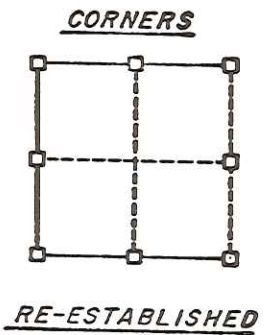


Harrison Monument



NOTES _____

NOTES _____



NOTES _____

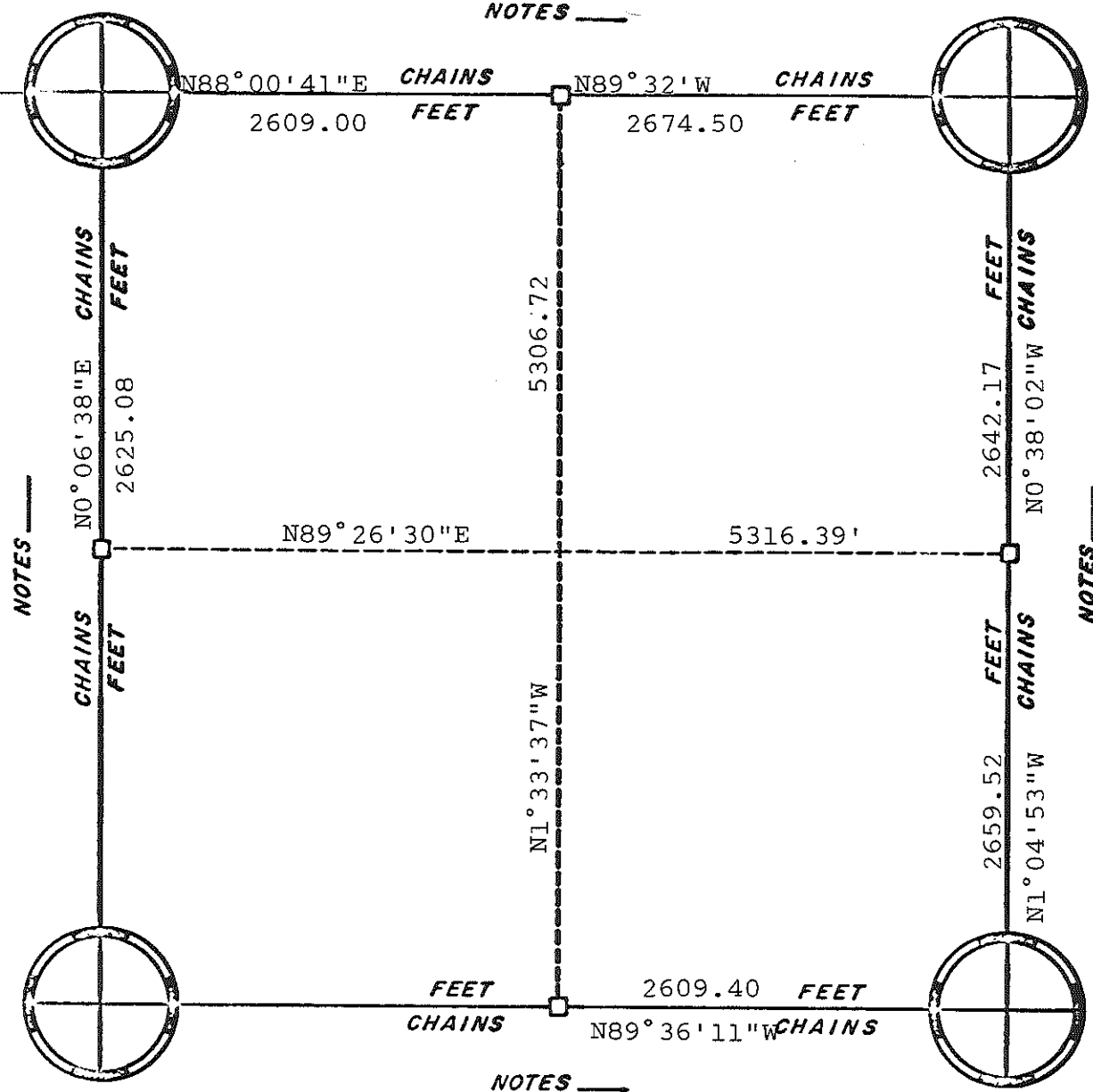
ORIGINAL SURVEY DATA

BY *wcj*

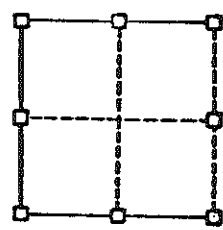
DATE 3/7/79

SURVEYED BY W. C. Jung	CONTRACT DATE Nov. 1978	COUNTY MONROE	TOWN-VILLAGE-CITY Portland	SECTION 6	TOWNSHIP 15N	RANGE 4W
---------------------------	----------------------------	---------------	-------------------------------	--------------	-----------------	-------------

NOTES _____



CORNERS



RE-ESTABLISHED

NOTES _____

NOTES _____

ORIGINAL SURVEY DATA

BY _____

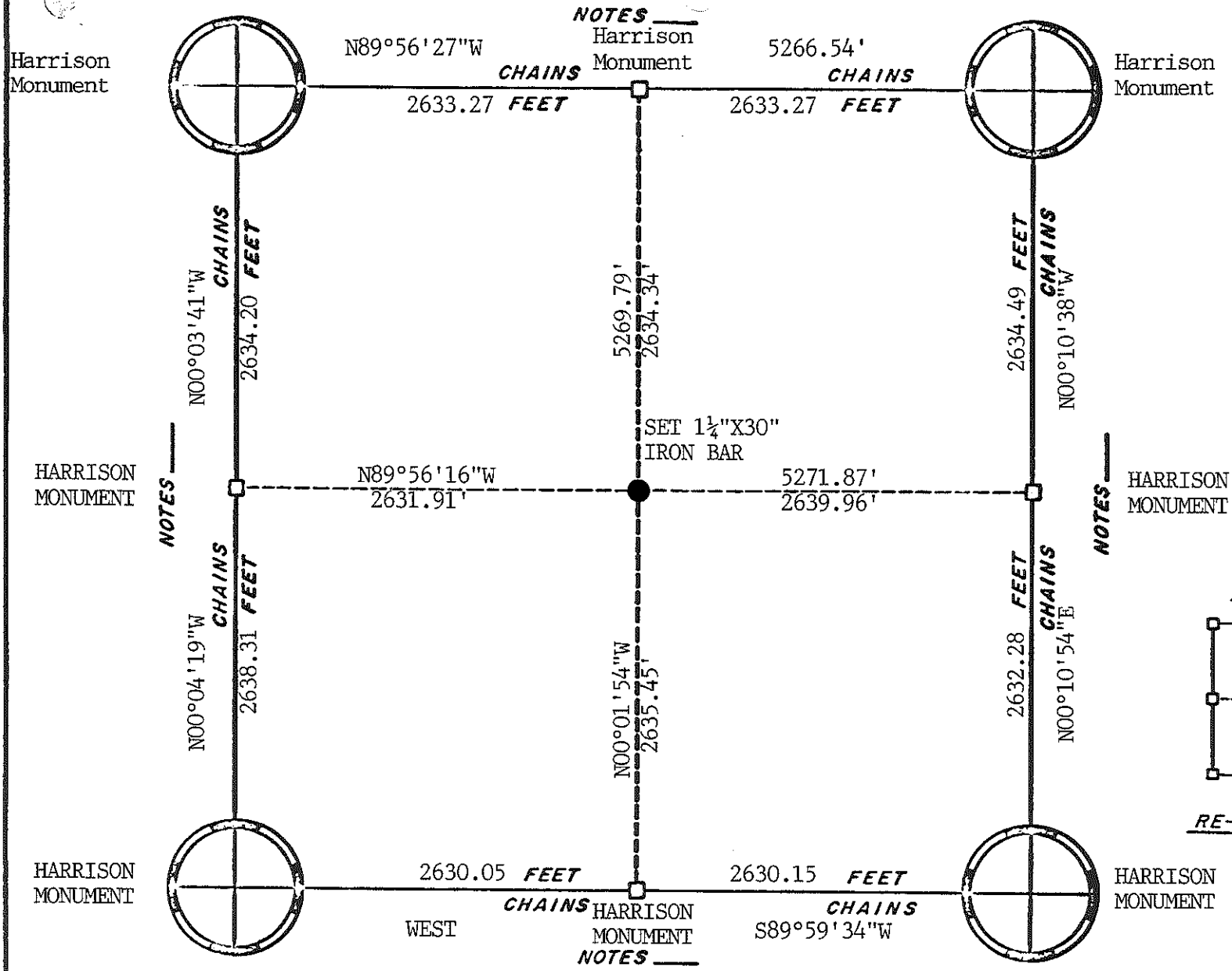
DATE _____

SURVEYED BY	CONTRACT DATE	COUNTY MONROE	TOWN-VILLAGE-CITY	SECTION	TOWNSHIP	RANGE
G. L. Dechant	Dec. 17, 1986	██████████	Portland	7	15N	4W

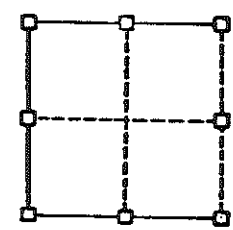
1/4 SEC. 1,
T15N-R5W

I.P. & STONE

NOTES _____



CORNERS



RE-ESTABLISHED

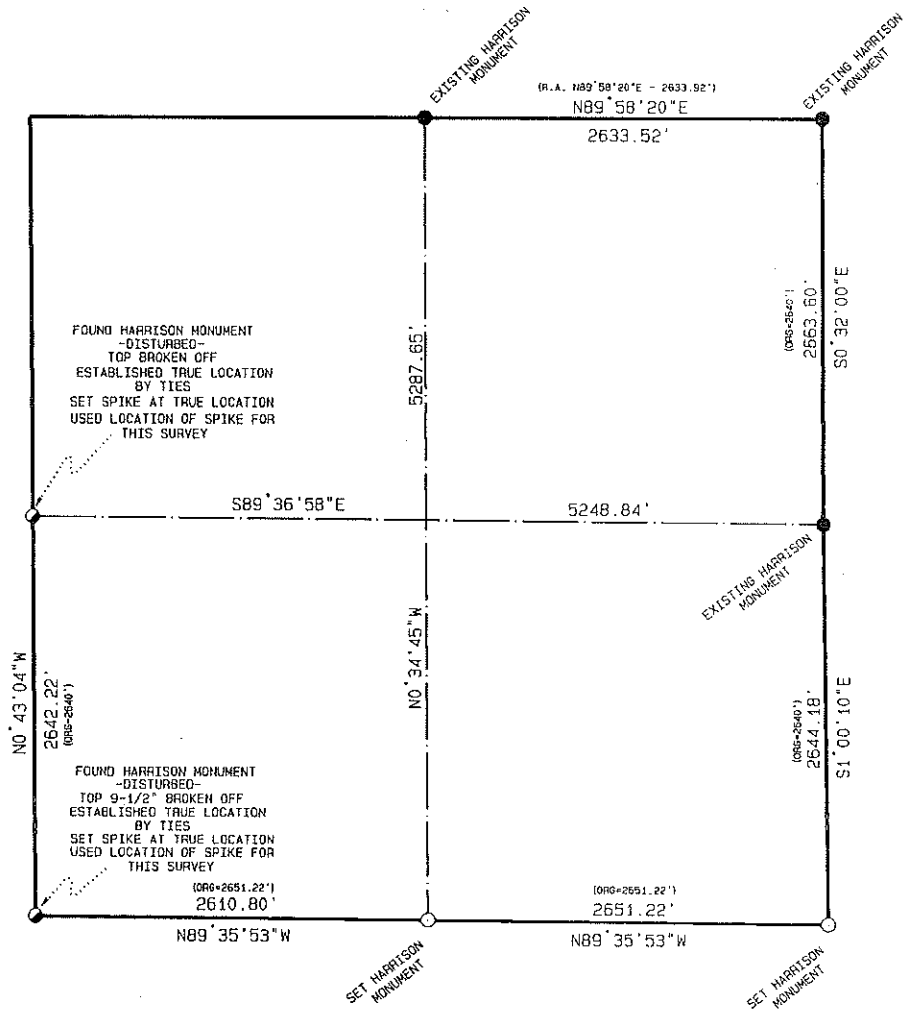
ORIGINAL SURVEY DATA

BY [REDACTED]
DATE SEP 2, 1992


SURVEYED BY	CONTRACT DATE	COUNTY	MONROE	TOWN-VILLAGE-CITY	SECTION	TOWNSHIP	RANGE
L.A. FEDDERSEN	SEPTEMBER 1992	[REDACTED]	MONROE	PORTLAND	15	15N	4W

SECTION DATA SHEET

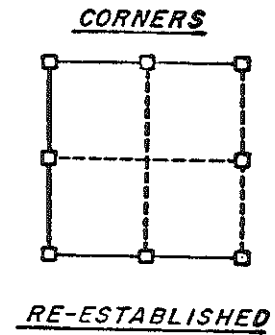
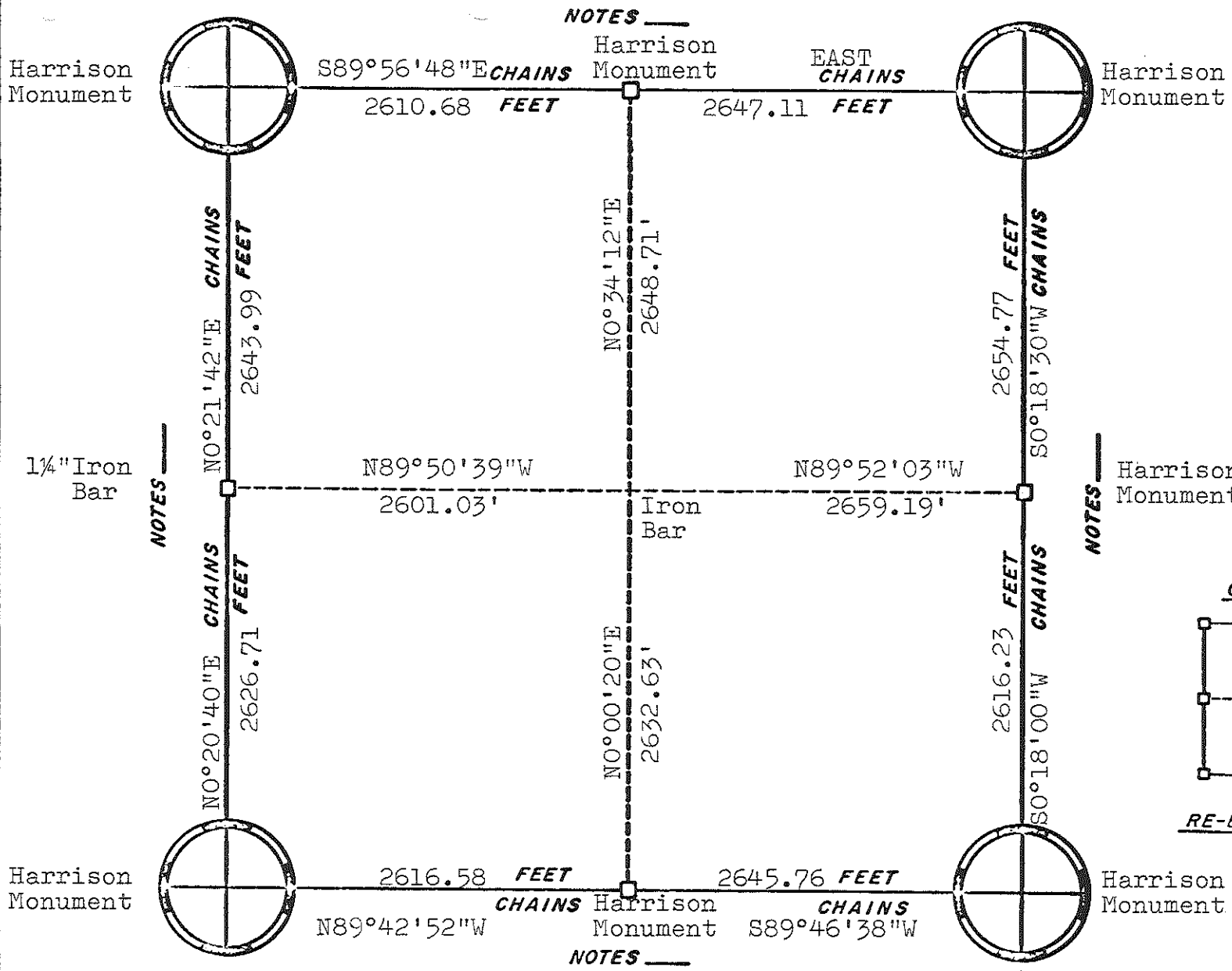
SECTION 21, T15N, R4W
TOWN OF PORTLAND, MONROE COUNTY,
WISCONSIN



LAMPMAN & ASSOCIATES
RT. 1, BOX V-31
DESOTO, WISCONSIN
Phone: 608-648-2288



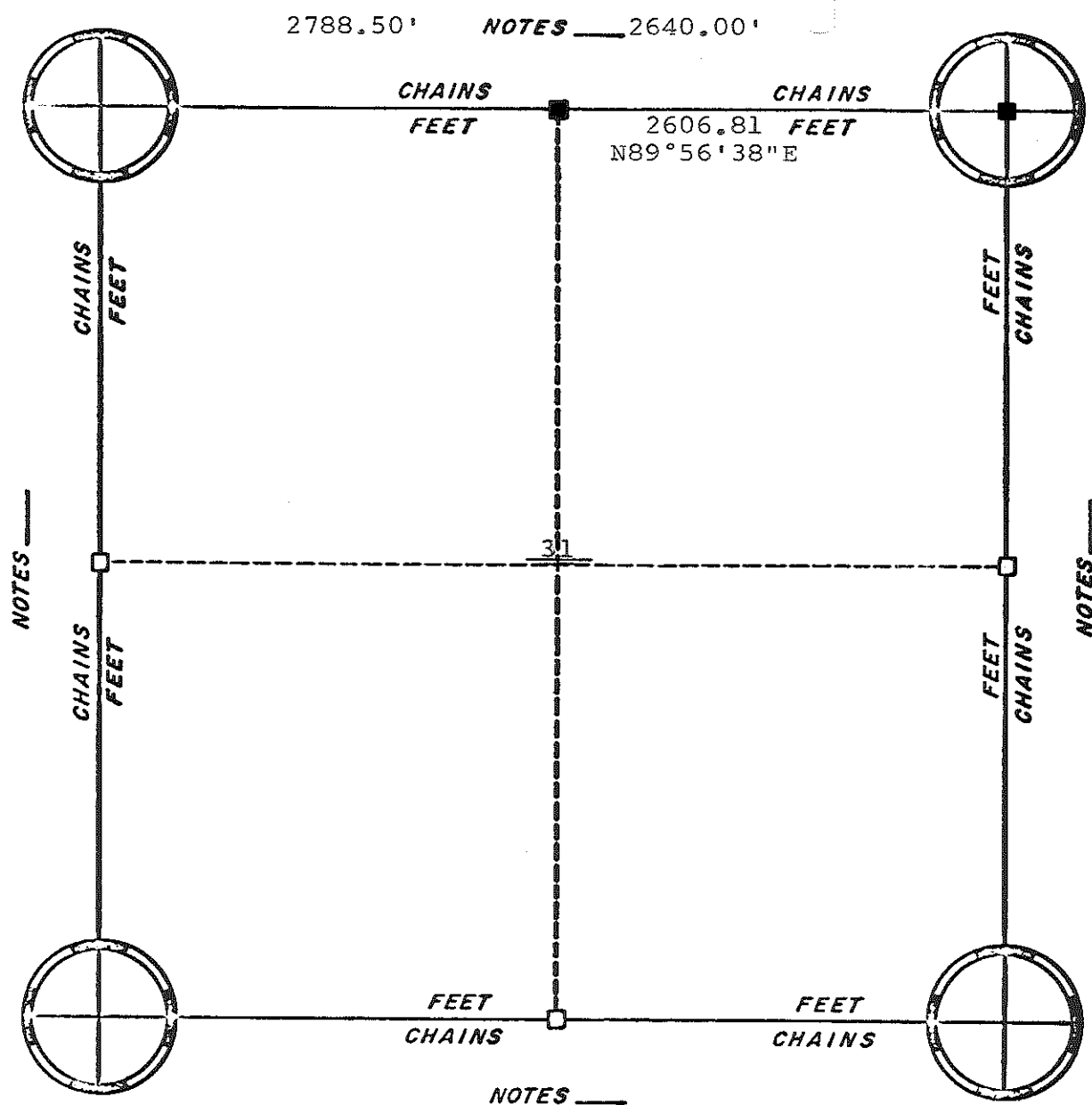
PREPARED FOR: MONROE COUNTY	
PROJECT NO.: 625-0327-96	DRAFTED BY: J.A.Z.
SCALE: 1" = 1000'	
DATE: APRIL 13, 1996	SHEET 1 OF 1



ORIGINAL SURVEY DATA

BY _____
DATE 3/17/81

SURVEYED BY W. C. Jung	CONTRACT DATE January, 1980	COUNTY MONROE	TOWN-VILLAGE-CITY Portland	SECTION 29	TOWNSHIP T15N	RANGE R4W
---------------------------	--------------------------------	------------------	-------------------------------	---------------	------------------	--------------



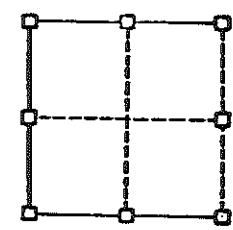
2788.50' NOTES _____ 2640.00'



TRUE NORTH

■ set cast iron Harrison monument

CORNERS



RE-ESTABLISHED

NOTES _____

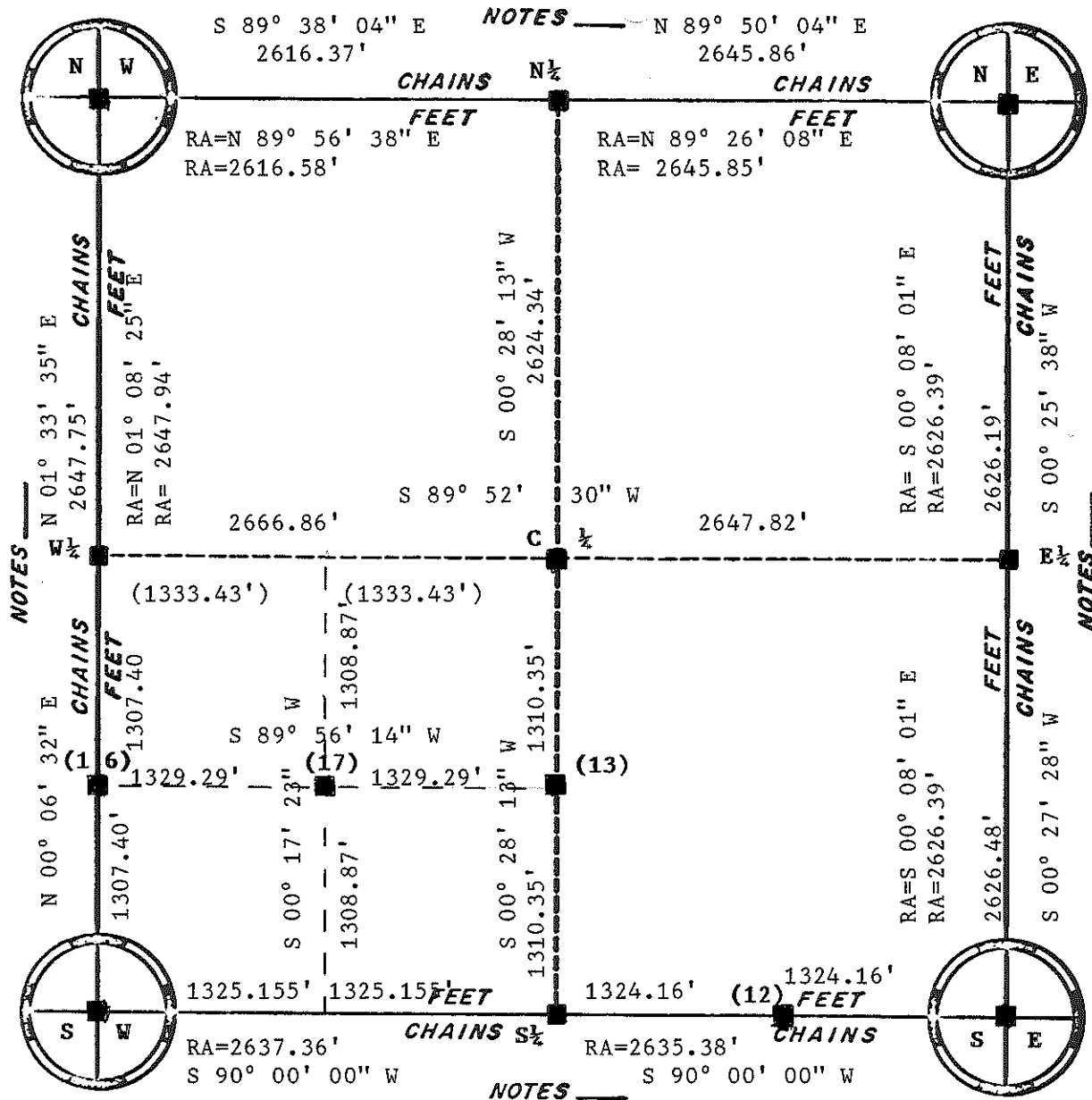
ORIGINAL SURVEY DATA

BY



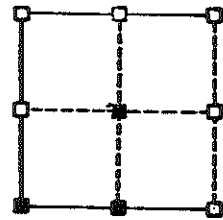
DATE 17 May, 1978

SURVEYED BY D.J. Malliet L.A. Feddersen	CONTRACT DATE May 1978	COUNTY MONROE [REDACTED]	TOWN-VILLAGE-CITY PORTLAND	SECTION 31	TOWNSHIP 15N	RANGE 4W
---	---------------------------	-----------------------------	-------------------------------	---------------	-----------------	-------------



Bearings are based on the South line of Southeast one quarter and assumed to bear: S 90° 00' 00\" W.

CORNERS



RE-ESTABLISHED

NOTE: Harrison Monuments were set at the S 1/2 and the SW corners. A 3/4\" X 30\" iron rebar were set at the 40 corners and the C 1/2.

BY _____

DATE _____

ORIGINAL SURVEY DATA

SURVEYED BY	CONTRACT DATE	COUNTY MONROE	TOWN- XXXXXX PORTLAND	SECTION	TOWNSHIP	RANGE
Ronald R. Hayden	April 1990	██████████	Portland	32	15N	4W

SECTION 32, TOWN 15 NORTH, RANGE 4 WEST

TOWN OF PORTLAND

Surveyed by: Ronald R. Hayden

MONROE COUNTY, WISCONSIN

Date: 4/1990

WITNESSES

C $\frac{1}{2}$ CORNER-Set 3/4" X 30" iron rebar, also set a upside down steel fence post one foot north of the corner.

Witness No.1--8" in diameter sugar maple with a spike set in the South side. Witness bears:
N 60° E 34.22'.

Witness No. 2--11" in diameter ash with a spike set in the west side. Witness bears: S 70° E 15.10'.

Witness No.3--11" in diameter Bitternut Hickory with a spike set in the South side. Witness bears:
S 40° W 19.84'.

Witness No.4--12" sugar maple with a spike set in the South side. Witness bears: S 85° W 19.84'.

Witness No.5-- 2" in diameter black cherry. No spike set. Witness bears: N 42° W 1.42'.

NOTE: Trees were not blazed because of hostile situation.

CORNER NO. 12-Found stone with a cross. Stone is 6" (N & S), and 4" (E & W). and believed to have been set by the Vernon County Surveyor, Knowler, in 1889, when he subdivided Section 5, T 14 N, R 4 W, Vernon County.

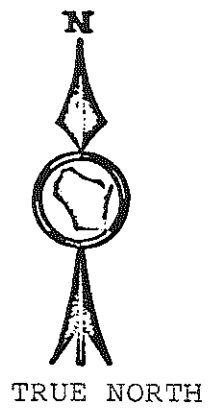
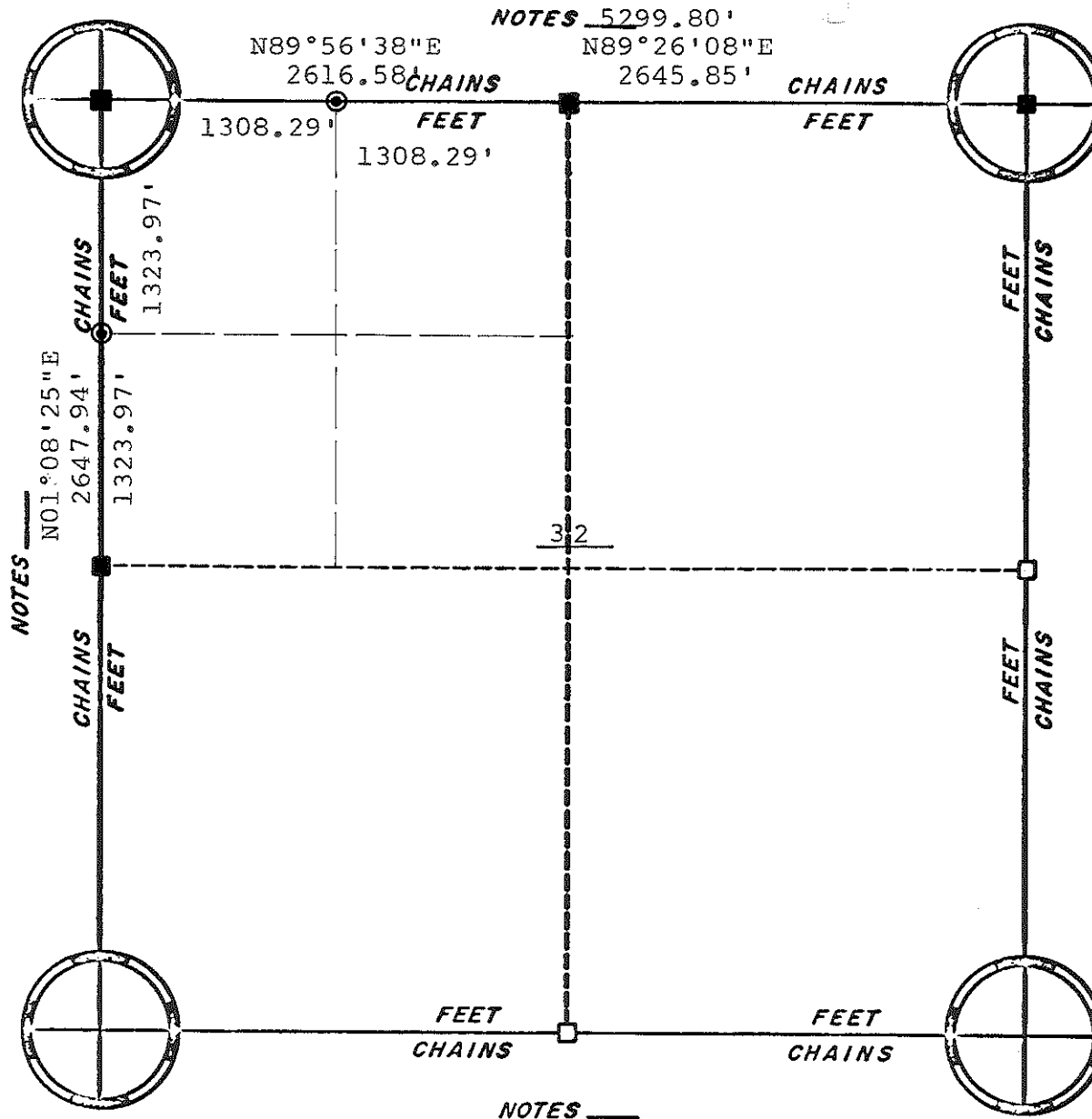
Witness No.1--12" in diameter sugar maple with a spike set in the North side. Witness bears: N 03° W 42.25'. Tree was not blazed.

Witness No.2--12" in diameter sugar maple with a spike set in the North side. Witness bears: N 55° E 9.14'. Tree was not blazed.

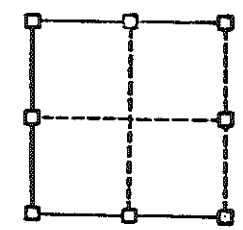
Witness No.3--8" in diameter sugar maple with a PK nail set in the West side. Witness bears: S 43° E 30.09'. Tree was not blazed.

Witness No.4--8" in diameter sugar maple with a spike set in the south side. Witness bears: S 83° W 7.18'. Tree was not blazed.

Corners NO. 13, 16, & 17 are all 3/4" X 30" rebars with upside down fence posts.



- set cast iron Harrison monument
- ⊙ set 1½"x30" hollow iron bars CORNERS



RE-ESTABLISHED

NOTES 5299.80'
 N89°56'38"E 2616.58' CHAINS
 N89°26'08"E 2645.85' CHAINS

NOTES
 N01°08'25"E
 2647.94'
 1323.97'

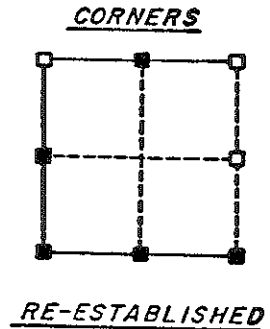
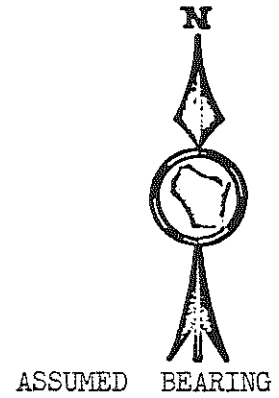
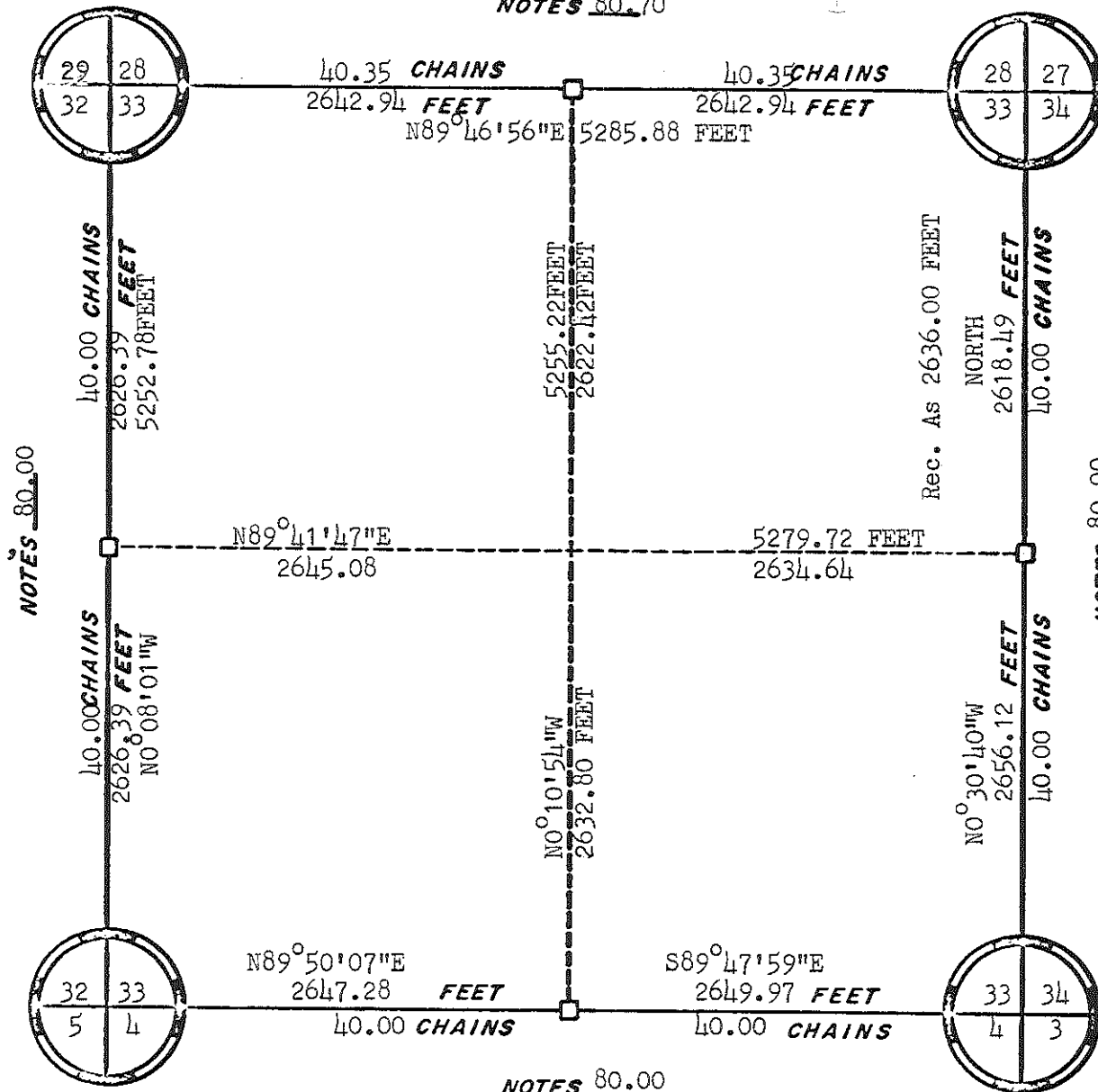
NOTES _____

ORIGINAL SURVEY DATA

BY _____
 DATE 17 May, 1978

SURVEYED BY D.J. Malliet L.A. Feddersen	CONTRACT DATE May, 1978	COUNTY MONROE _____	TOWN-VILLAGE-CITY PORTLAND	SECTION 32	TOWNSHIP 15N	RANGE 4W
---	----------------------------	------------------------	-------------------------------	---------------	-----------------	-------------

NOTES 80.70



NOTES 80.00

ORIGINAL SURVEY DATA

BY _____
DATE 12-14-78

SURVEYED BY Robert M. Lampman S-1296	CONTRACT DATE	COUNTY MONROE _____	TOWN-VILLAGE-CITY Portland	SECTION 33	TOWNSHIP 15 N	RANGE 4 W
--	---------------	------------------------	-------------------------------	---------------	------------------	--------------