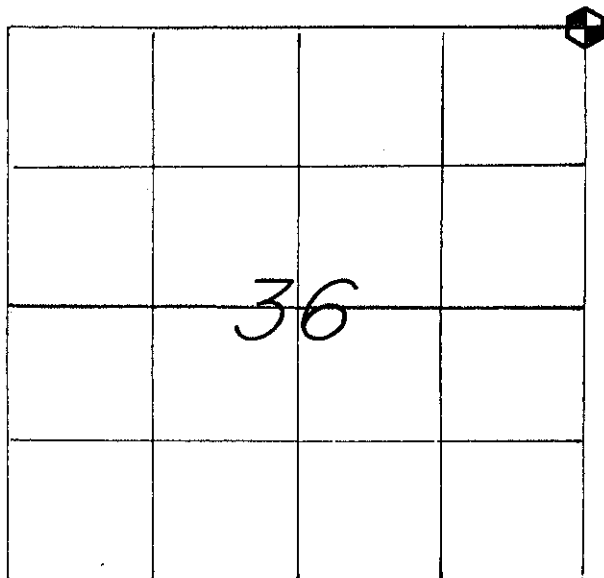


21505250000

U. S. PUBLIC LAND SURVEY MONUMENT RECORD

SECTION 36 T 15 N, R 5 W, TOWN OF WASHINGTON
 LA CROSSE COUNTY



WISCONSIN COORDINATE SYSTEM
North
East
Theta Angle
Horiz. Order
Vert. Order
TYPE OF LANDMARK <i>BRASS CAP LUNDE MARKER.</i>
BEARINGS ARE REFERENCED TO <i>ASSUMED NORTH.</i>

LOCATION OF LANDMARK
 CREW: WILLIAM C. JUNG
 PETER F. FOLLANSBEE
 DATE: 2/04/1998.

Describe any record evidence, monument evidence, testimonial evidence or any other material evidence you considered and whether the monument was found or restored through acceptance of an obliterated evidence location.

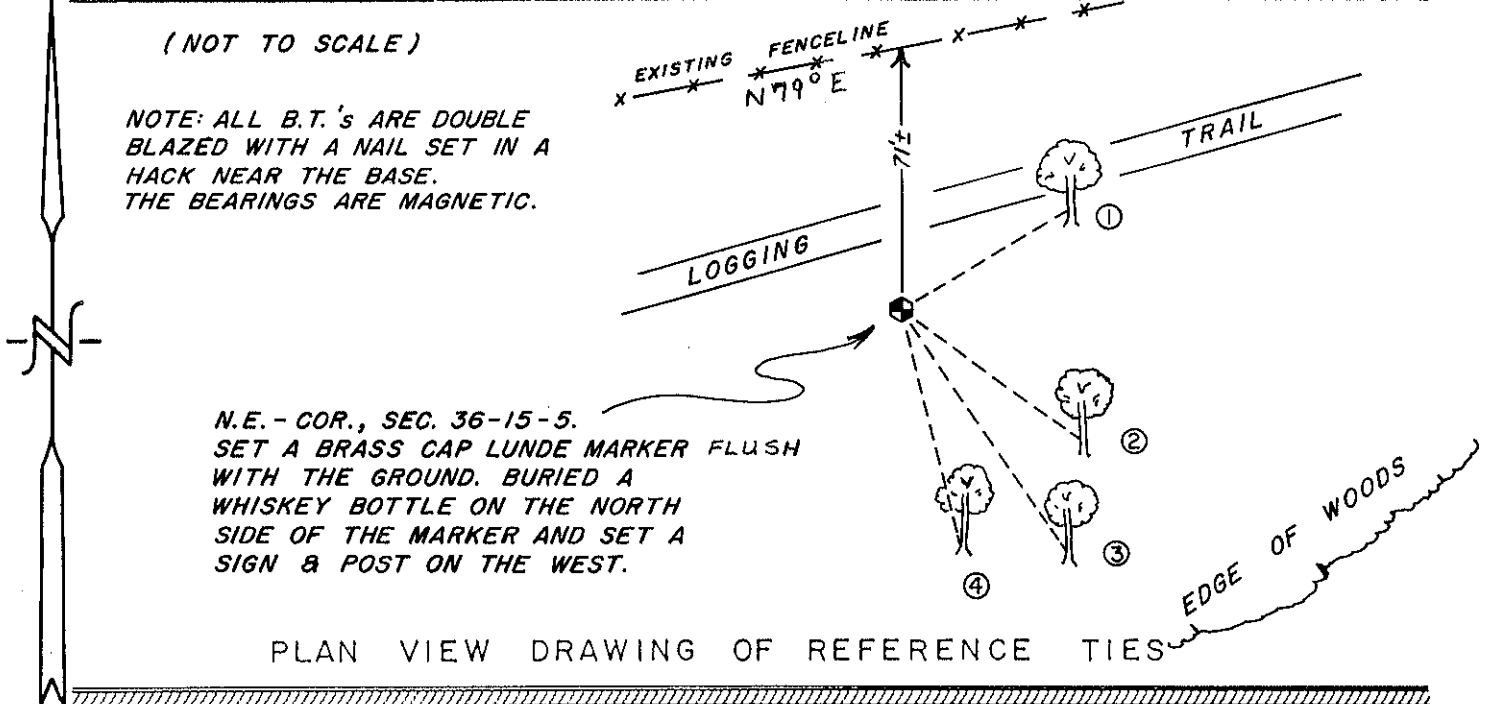
I set this corner by single proportionate measurement and monumented it with a brass capped Lunde marker. The fence to the North does not fit. When I talked to Mr. Ardell Olson about this, he didn't seem surprised.

Describe or show any material discrepancy between the location of the restored corner and that of the corner previously restored or reestablished.

None known.

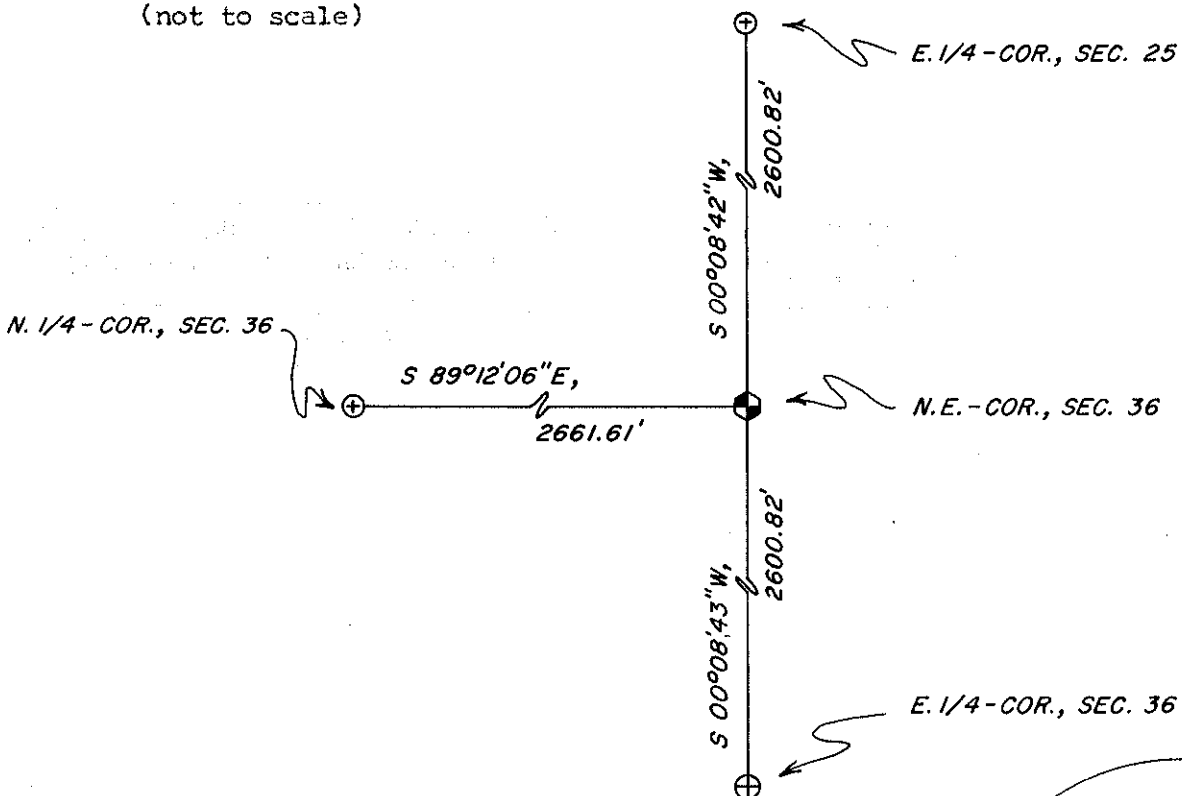
RECORD OF DURABLE WITNESS MONUMENTS
MAGNETIC

NO	DESCRIPTION	BEARING	DISTANCE
1	Set a nail in the S.-side 17" White Oak	N 59° E	20.03 Ft.
2	Set a nail in the S.W.-side 12" White Oak	S 54° E	22.59 Ft.
3	SET A NAIL IN THE N.E.-SIDE 12" WHITE OAK	S 34° E	30.37 FT.
4	SET A NAIL IN THE N.E.-SIDE 11-1/2" OAK	S 14° E	24.84 FT.



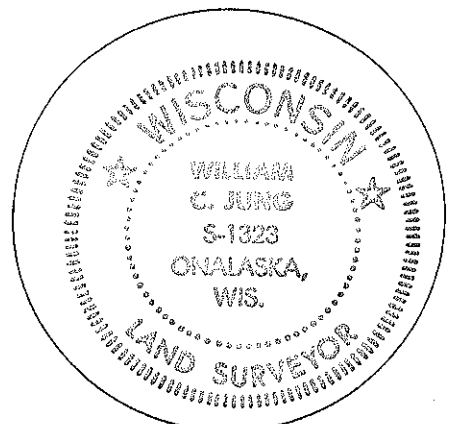
MAP SHOWING DISTANCE AND DIRECTION TO OTHER PUBLIC LAND SURVEY CORNERS USED FOR REESTABLISHING THE CORNER

(not to scale)



I, WILLIAM C. JUNG, COUNTY SURVEYOR
HEREBY CERTIFY THAT THE CORNER LOCATION SHOWN ON THIS RECORD WAS DETERMINED BY ME OR UNDER MY DIRECTION AND CONTROL AND THAT THIS U. S. PUBLIC LAND SURVEY MONUMENT RECORD IS CORRECT AND COMPLETE TO THE BEST OF MY KNOWLEDGE AND BELIEF.

William C. Jung March 10, 1998
Signature Date



Seal