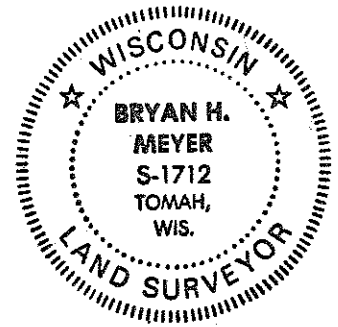


CERTIFICATE

CERTIFIED LAND CORNER

No. 119

21504352000



H. A. Sime and Associates
P. O. Box 705
Tomah, Wisconsin 54660
(608)-372-5392

I, Bryan H. Meyer, do hereby certify that on the 25th day of July 19 91, I found (evidence) ~~(evidence)~~ of the East 1/4 corner of Section 35, T 15 N, R 4 W Fourth Principal Meridian, and I re-established said corner according to the Wisconsin Statutes as shown and described hereon.

History of corner establishment since Original Government Survey

Nothing recorded.

Description of corner evidence found:

I accepted the intersection of down fences projected from the West and South as the best available evidence.

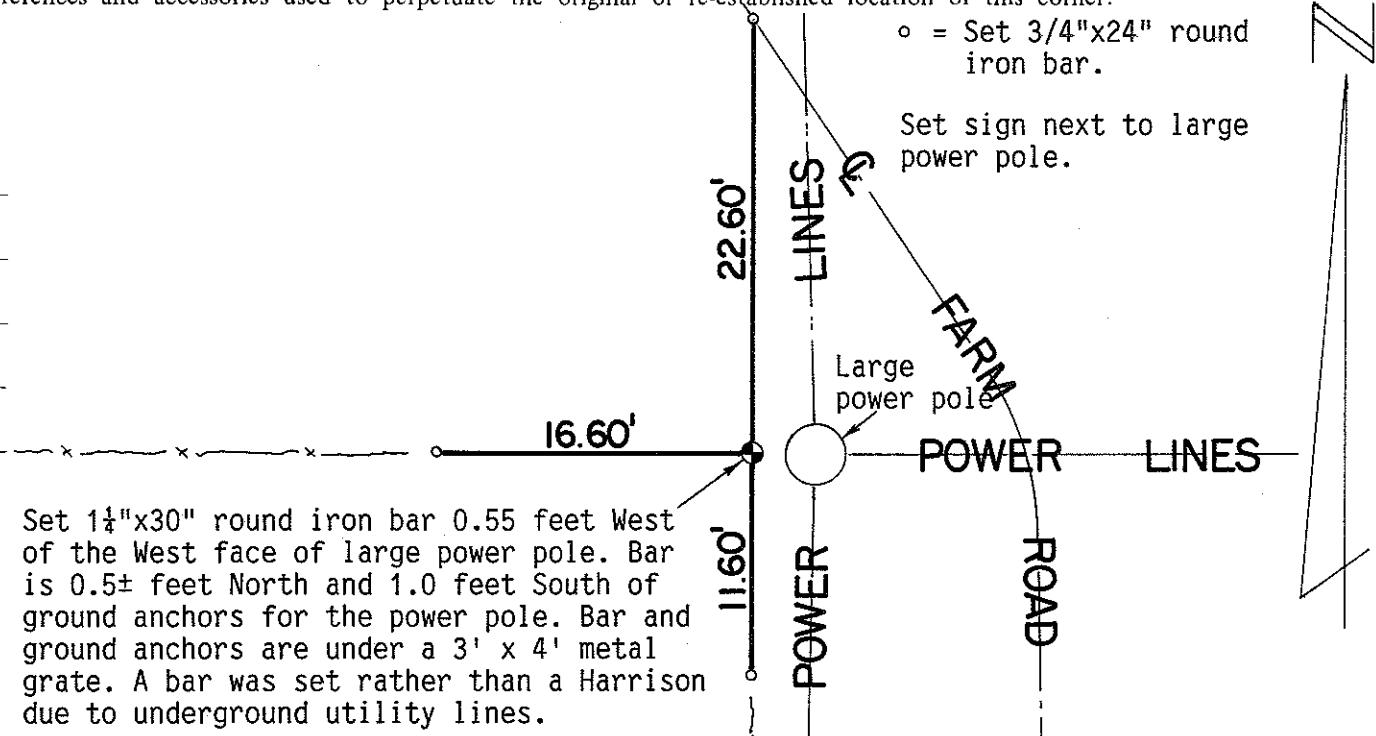
Dated this 31st day of July 19 91.
Bryan H. Meyer
Deputy County Surveyor
Title

COUNTY SURVEYOR FORM NO. 1

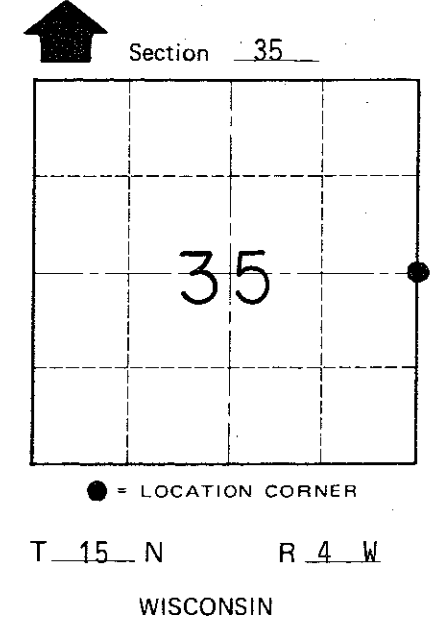
Description of corner and witness monuments, references and accessories used to perpetuate the original or re-established location of this corner:

Crew: Meyer, Kostka
Date: July 31, 1991
Weather: P. Cloudy 85°±
Witnesses to corner location:

Brent Kostka
Bryan H. Meyer



Set 1 1/2" x 30" round iron bar 0.55 feet West of the West face of large power pole. Bar is 0.5± feet North and 1.0 feet South of ground anchors for the power pole. Bar and ground anchors are under a 3' x 4' metal grate. A bar was set rather than a Harrison due to underground utility lines.



SURVEY CONTROL ORDER

Horizontal _____
Vertical _____

WISCONSIN COORDINATE SYSTEM

Corner	East (X)	North (Y)	Elevation (Z)	Zone
Control Sta. Name				

~~City/Village of~~ Town of Portland
County of Monroe