

21504350020

I, Ronald D. Parish, do hereby certify that on the 3rd day of December 1984, I found ~~(evidence)~~ (no evidence) of the S 1/2 corner of Section 35, T 15 N, R 4 W Fourth Principal Meridian, and I re-established said corner according to the Wisconsin Statutes as shown and described hereon.

History of corner establishment since Original Government Survey

No known history since the original survey

Description of corner evidence found:

Set corner at intersection of fence line to the east and center-line of 8th Drive (a Town Road). This fits the occupation to the west real well.

Dated this 20th day of Dec. 1984.

Ronald D. Parish

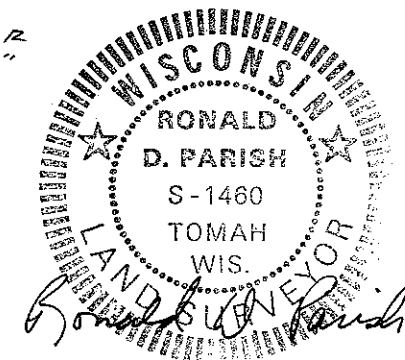
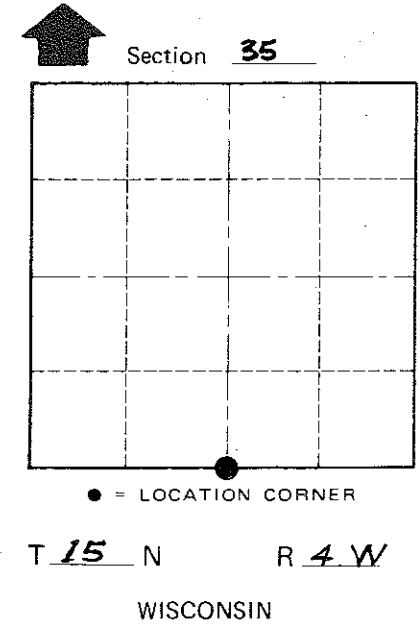
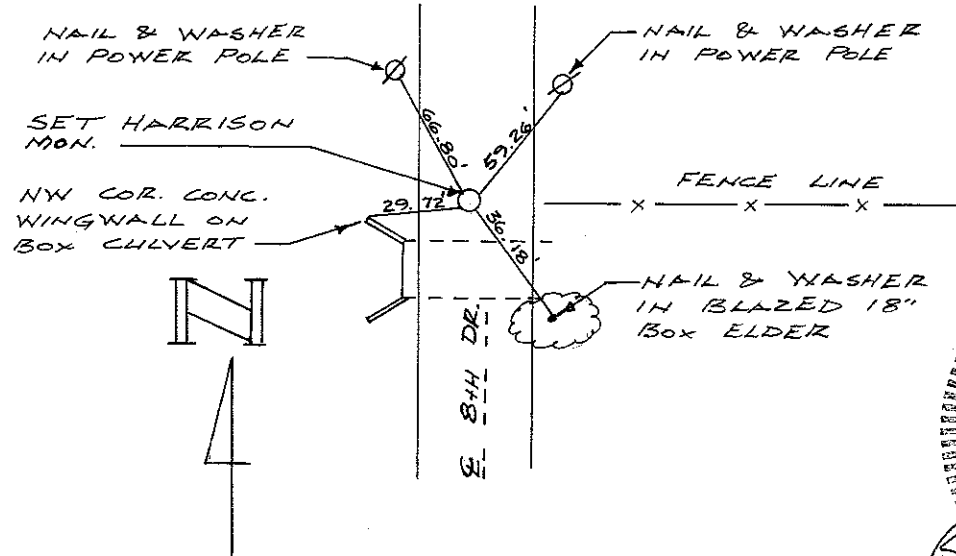
Registered Land Surveyor
Title

Description of corner and witness monuments, references and accessories used to perpetuate the original or re-established location of this corner:

Witnesses to corner location:

Ronald D. Parish

Charles Dade



COUNTY SURVEYOR FORM NO. 1

SURVEY CONTROL ORDER	
Horizontal	_____
Vertical	_____

WISCONSIN COORDINATE SYSTEM

Corner	East (X)	North (Y)	Elevation (Z)	Zone
Control Sta. Name				

City, Village or Town Portland

County of Monroe