

21504340000

I, Ronald D. Parish, do hereby certify that on the 3rd day of December 1984, I found ~~evidence~~ (no evidence) of the SW corner of Section 35, T15 N, R 4 W Fourth Principal Meridian, and I re-established said corner according to the Wisconsin Statutes as shown and described hereon.

History of corner establishment since Original Government Survey  
Holden was here in November of 1910

Dated this 20th day of Dec. 1984.

Description of corner evidence found:

Could find no evidence of corner. Set corner at intersection of three-way fence corner. This fits the occupation to the East real well and fits distance and occupation to the North.

Ronald D. Parish  
Registered Land Surveyor  
Title

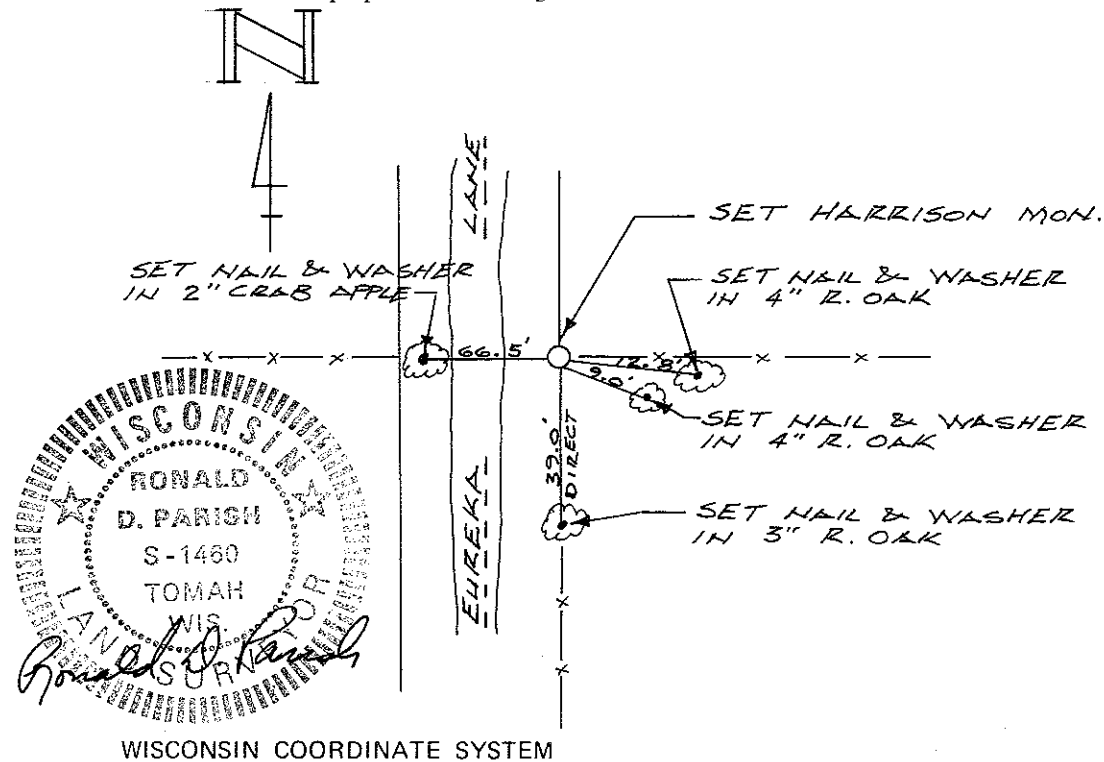
COUNTY SURVEYOR FORM NO. 1

Description of corner and witness monuments, references and accessories used to perpetuate the original or re-established location of this corner:

Witnesses to corner location:

Ronald D. Parish

Charles Dade

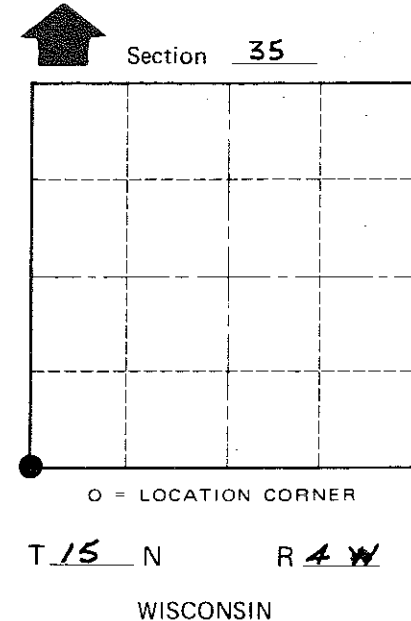


SURVEY CONTROL ORDER

Horizontal	_____
Vertical	_____

WISCONSIN COORDINATE SYSTEM

Corner	East (X)	North (Y)	Elevation (Z)	Zone
Control Sta. Name				



City, Village or Town Portland  
County of Monroe