

21504332000

I, Bryan H. Meyer, do hereby certify that on the 8<sup>th</sup> day of March 19 83, I found (evidence)  of the West 1/4 corner of Section 34, T 15 N, R 4 W Fourth Principal Meridian, and I re-established said corner according to the Wisconsin Statutes as shown and described hereon.

History of corner establishment since Original Government Survey  
Fred Holden was here in December of 1910 and set an iron thimble off an Original Government bearing tree. Harley Sime was here in March of 1961. Robert Lampman was here in                      Description of corner evidence found: December of 1978.

Dated this 21st day of March 1983.

Found Holden's iron thimble and the Original government bearing tree. (Maple)

Bryan H. Meyer  
Deputy County Surveyor



Approved: HARLEY A. SIME  
MONROE CO. SURVEYOR

COUNTY SURVEYOR FORM 2

Description of corner and witness monuments, references and accessories used to perpetuate the original or re-established location of this corner:

Date: March 8, 1983  
Weather: Snowing, +32°F

Replaced iron thimble with Harrison monument, up 8" + in mound of dirt and stones.

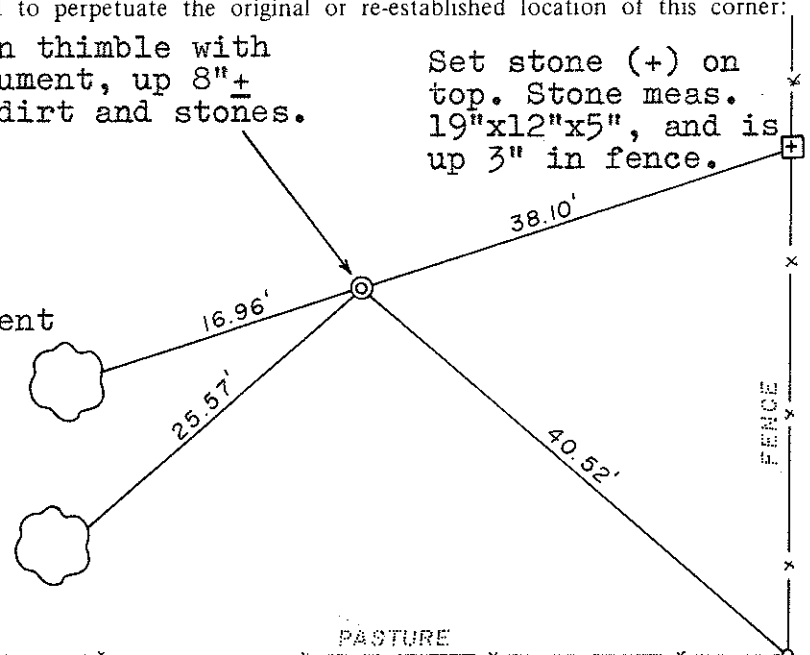
Set stone (+) on top. Stone meas. 19"x12"x5", and is up 3" in fence.

Witnesses to corner location:

Bryan H. Meyer

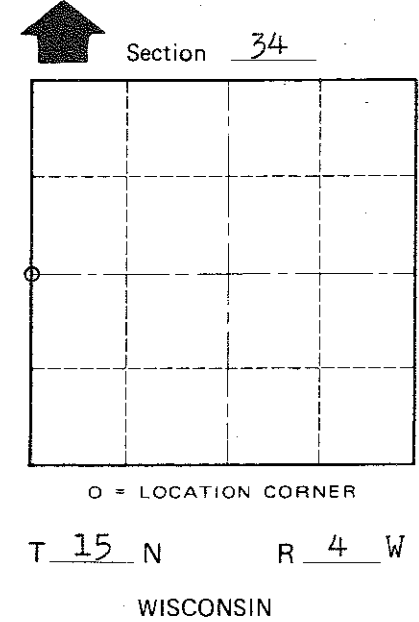
Original Government bearing tree-Now a 45" Maple.

30" Maple



Both bearing trees are double blazed Maples with each distance to a nail in a hack in the side of each tree.

Set 3/4"x24" iron bar at corner of pasture fence.



SURVEY CONTROL ORDER

Horizontal	_____
Vertical	_____

WISCONSIN COORDINATE SYSTEM

Corner	East (X)	North (Y)	Elevation (Z)	Zone
Control Sta. Name				

~~City, Village or~~ Town of Portland  
County of Monroe