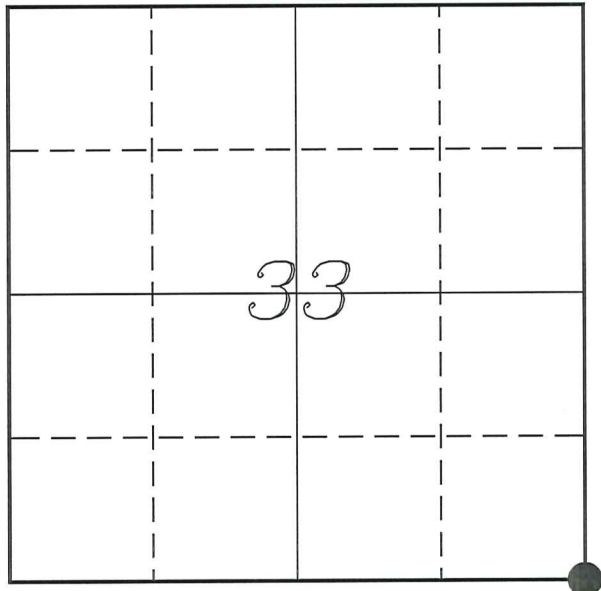


U. S. PUBLIC LAND SURVEY MONUMENT RECORD

SECTION 33, T15N, R4W
MONROE/VERNON COUNTY, WISCONSIN



LOCATION OF LANDMARK

Witnesses: Laurence E Johns III

Date: 19 April 2020

MONROE COUNTY COORDINATE SYSTEM	
Northing	299980.372
Easting	615764.544
VERNON COUNTY COORDINATE SYSTEM	
Northing	210796.103
Easting	712216.794
Datum	NAD 1983 (2011)
TYPE OF LANDMARK:	
Existing PK Nail	
BEARINGS ARE REFERENCED TO: Vernon County Coordinates (Survey Grade)	

Adjust Bearings +00°05'56"
To Convert to Monroe County

Describe or show any material discrepancy between the location of the restored corner and that of the corner previously restored or re-established.

Uriah Biggs established this corner in October 1845.

Robert Lampman was at this corner, in Jan 1979. he shows he set a Harrison Monument based on occupation and prepared a tie sheet.

Jay Adams was at this corner, in May 2013. He shows he found a 7/8" iron rod and verified its location. He prepared a tie sheet.

Chris Fechner was at this corner, in May 2016, during a survey in Section 4. He shows he found a Harrison Monument.

Describe any record evidence, monument evidence, testimonial evidence or any other material evidence you considered and whether the monument was found or restored through acceptance of an obliterated evidence location.

No bearing trees of record were located.

Found a PK Nail at the location shown on Adams' tie sheet. Most likely put in after resurfacing of the road. Signal strength indicates there may be a larger rod underneath but it was not verified.

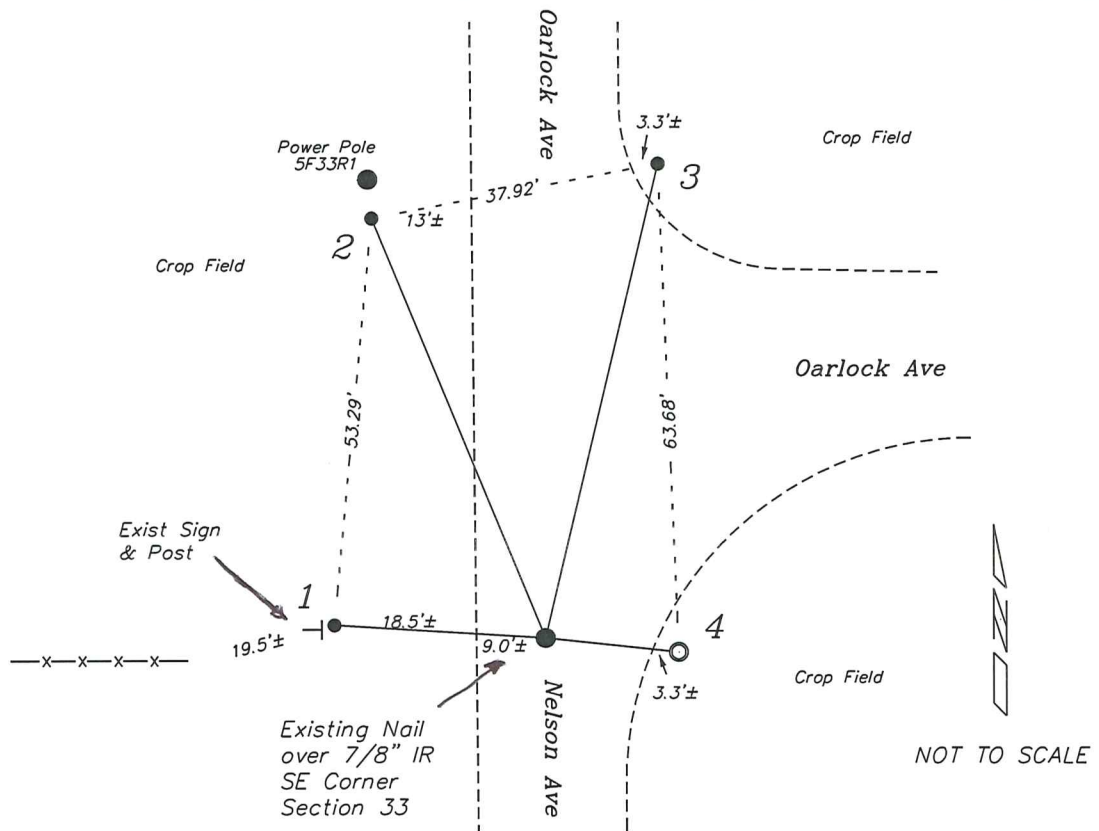
There is no record of the origin of the 7/8" iron rod or what happened to the Harrison, but most likely destroyed during road maintenance.

Adams states he verified the location of the monument and it does match two of Lampman's ties. The PK Nail does match Adams' ties.

I accepted the location of the PK Nail as the best available evidence of the original government corner.

RECORD OF DURABLE WITNESS MONUMENTS

NO	DESCRIPTION	BEARING	DISTANCE
1	Existing 3/4" Iron Rod In Grassy Area - 1' East of Sign	N 86°30'36" W (N 86°22'03" W)	27.52' (27.59')
2	Existing 3/4" Iron Rod 4' South of Power Pole 5F33R1	N 22°25'50" W (N 22°25'00" W)	59.22' (59.16')
3	Existing 3/4" Iron Rod At Field Edge	N 13°21'07" E (N 13°21'27" E)	63.50' (63.39')
4	Existing 1" Iron Pipe At Field Edge	S 83°56'45" E (S 83°14'31" E) (EAST)	17.45' (17.47') (17.50')



PLAN VIEW DRAWING OF REFERENCE TIES

Map Showing Distance And Direction To Other Public Land Survey
Corners Used For Re-Establishing The Corner

None at this time.

I, Laurence E Johns III PLS 2804, Professional Land Surveyor, hereby certify that the corner location shown on this record was determined by me or under my direction and control, and that this U.S. Public Land Survey Monument Record is correct and complete to the best of my knowledge and belief.



VERNON COUNTY U.S. PUBLIC LAND SURVEY MONUMENT RECORD

INSTRUCTIONS: THIS RECORD SHALL SHOW THE LOCATION OF THE CORNER AND SHALL INCLUDE ALL OF THE FOLLOWING ELEMENTS (A THROUGH I)

(A) IDENTIFY THE CORNER BY REFERENCE TO THE U.S. PUBLIC LAND SURVEY SYSTEM

■ = CORNER MONUMENT RESTORED

WITNESSES TO CORNER LOCATION:

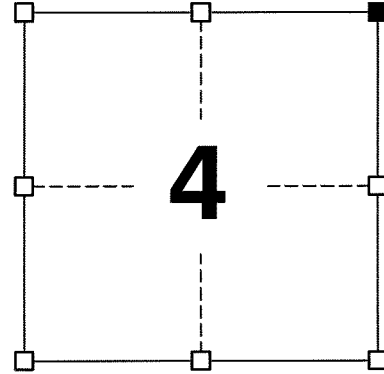
JAY P. ADAMS

GEOGRAPHIC COORDINATES,
NAD 83 (2011) ADJUSTMENT:

LONGITUDE: 90° 51' 02.1641"
LATITUDE: 43° 43' 31.7398"

WISCONSIN COUNTY COORDINATE SYSTEM (WCCS), VERNON COUNTY,
NAD 83 (2011) ADJUSTMENT:

NORTHING: 210,796.17
EASTING: 712,216.74



SECTION 4
TOWN 14 NORTH, RANGE 4 WEST
TOWN OF CHRISTIANA

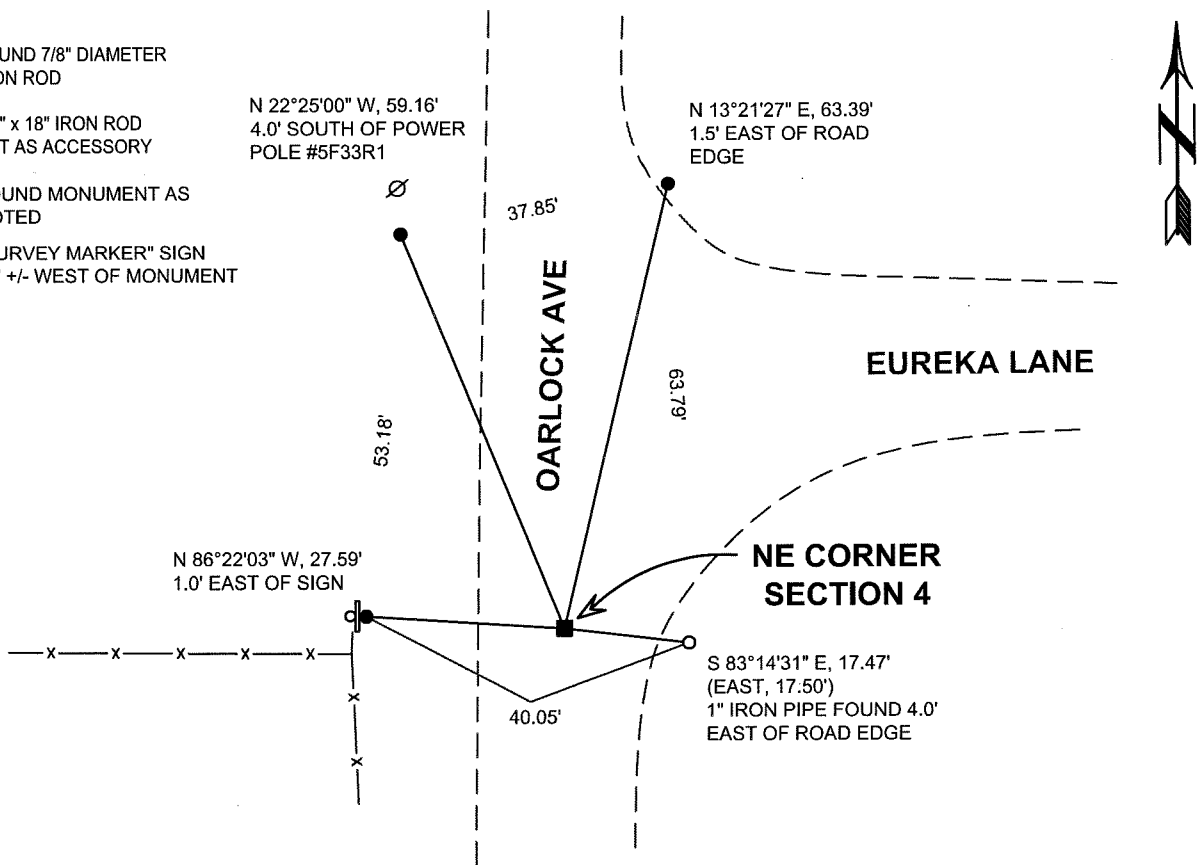
(B) DESCRIBE ANY RECORD EVIDENCE, MONUMENT EVIDENCE, OCCUPATIONAL EVIDENCE, TESTIMONIAL EVIDENCE, OR ANY OTHER MATERIAL EVIDENCE YOU CONSIDERED, AND WHETHER THE MONUMENT WAS FOUND OR PLACED.

I COULD FIND NO MONUMENTS OR BEARING TREES FROM THE ORIGINAL GOVERNMENT SURVEY. I RECOVERED A 7/8" DIAMETER IRON ROD JUST BELOW THE SURFACE OF OARLOCK AVE. AFTER VERIFICATION OF THIS MONUMENT'S LOCATION, I ACCEPTED IT AS THE BEST AVAILABLE EVIDENCE OF THE ORIGINAL GOVERNMENT CORNER. I DID NOT ATTEMPT TO VERIFY THE LENGTH OF THIS MONUMENT OR WHETHER THE HARRISON MONUMENT SET BY LAMPMAN WAS UNDER IT BUT RATHER LEFT THIS SUITABLE AND STABLE MONUMENT IN PLACE.

(C) IN THE PLAN VIEW DRAWING BELOW, PROVIDE REFERENCE TIES TO AT LEAST 4 WITNESS MONUMENTS, (WITNESS MONUMENTS SHALL BE MADE OF CONCRETE, NATURAL STONE, IRON OR ANY OTHER EQUALLY DURABLE MATERIAL.) DESCRIBE WITNESS MONUMENTS.

(D) SHOW A PLAN VIEW DRAWING DEPICTING THE RELEVANT MONUMENTS AND REFERENCE TIES, WHICH IS SUFFICIENTLY DETAILED TO ENABLE ACCURATE RELOCATION OF THE CORNER MONUMENT IF IT IS DISTURBED.

- FOUND 7/8" DIAMETER IRON ROD
- 3/4" x 18" IRON ROD SET AS ACCESSORY
- FOUND MONUMENT AS NOTED
- ⌊ "SURVEY MARKER" SIGN 28' +/- WEST OF MONUMENT



(E) DESCRIBE ANY MATERIAL DISCREPANCY BETWEEN THE LOCATION OF THE CORNER AS RESTORED OR REESTABLISHED AND THE LOCATION OF THAT CORNER AS PREVIOUSLY RESTORED OR REESTABLISHED BY DISTANCE AND DIRECTION. SHOW THE DISCREPANCY ON THE PLAN VIEW DRAWING UNDER (D), ABOVE. SHOW THE DISTANCES BETWEEN THE CORNER AS PREVIOUSLY RESTORED OR REESTABLISHED AND (1) THE CORNER AS RESTORED OR REESTABLISHED, AND (2) TO AT LEAST 2 OF THE WITNESS MONUMENTS SHOWN ON THE DRAWING IN (D) ABOVE.

N/A

(F) WAS THE CORNER RESTORED THROUGH ACCEPTANCE OF (1) AN OBLITERATED EVIDENCE LOCATION, OR, (2) A FOUND PERPETUATED LOCATION?

(2) A FOUND PERPETUATED LOCATION

(G&H) WAS THE CORNER REESTABLISHED THROUGH LOST CORNER PROPORTIONATE METHODS? IF SO, SHOW THE METHOD, INCLUDING THE DIRECTIONS AND DISTANCES TO OTHER PUBLIC LAND SURVEY CORNERS USED AS EVIDENCE OR USED FOR PROPORTIONING IN DETERMINING THE CORNER LOCATION.

N/A

CORNER HISTORY

ORIGINAL GOVERNMENT CORNER ESTABLISHED BY URIAH BIGGS IN 1845.

IN A TIE SHEET DATED 18 JANUARY 1979, ROBERT LAMPMAN SET A HARRISON MONUMENT 6 INCHES BELOW THE SURFACE OF A TOWN ROAD BASED ON OCCUPATIONAL EVIDENCE. HE USED THIS CORNER WHILE PERFORMING A SURVEY DATED 14 DECEMBER 1978.

AFFIX LAND SURVEYOR SEAL

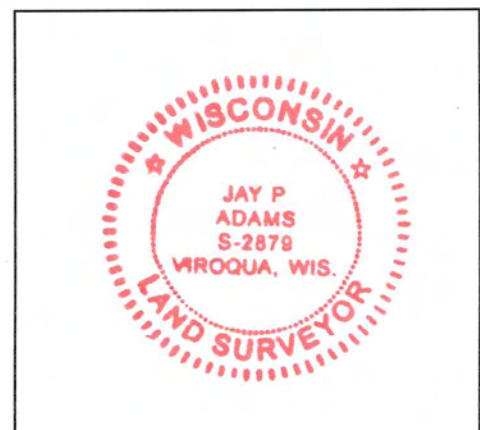
(I) I, JAY P. ADAMS, R.L.S. 2879, CERTIFY THAT THE CORNER LOCATION SHOWN ON THIS RECORD WAS DETERMINED BY ME OR UNDER MY DIRECTION AND CONTROL AND THAT THIS U.S. PUBLIC LAND SURVEY MONUMENT RECORD IS CORRECT AND COMPLETE TO THE BEST OF MY KNOWLEDGE AND BELIEF.



SIGNATURE

31 MAY 2013

DATE



VERNON COUNTY COORDINATE FORM

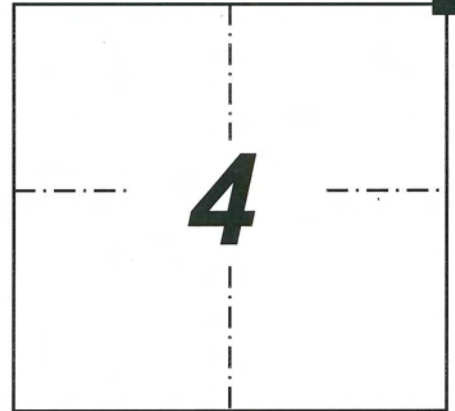
"As An Addendum To"

A CERTIFIED U.S. PUBLIC LAND SURVEY MONUMENT RECORD

INSTRUCTIONS: THIS RECORD FORM SHOULD BE USED WHEN COORDINATES ARE PROVIDED FOR A PUBLIC LAND SURVEY CORNER AND SHALL INCLUDE ALL OF THE FOLLOWING ELEMENTS (A-D)

(A) IDENTIFY THE CORNER BY REFERENCE TO THE U.S. PUBLIC LAND SURVEY SYSTEM IN DIAGRAM AT RIGHT

■ = CORNER MONUMENT



T 14 N, R 4 W

(B) COORDINATES:

GEOGRAPHIC (Degrees Minutes Decimal Seconds to 4 places):

LATITUDE: **43° 43' 31.7398"**

LONGITUDE: **090° 51' 02.1641"**

ELLIPSOID HT (m): -

HORIZONTAL DATUM: **NAD 83 (2011)**

ORTHOMETRIC HT (U.S. ft): -

VERTICAL DATUM: -

VERNON COUNTY (U.S. FEET)

Coord. Quality (+/-)

NORTHING (Y): **210,796.17**

EASTING (X): **712,216.74**

METHOD USED TO COMPUTE COORDINATES (check and complete as applicable):

RTK Observations Static Baselines OPUS Solution (attach copy of OPUS report)

Combination of conventional procedures with GPS observations to set temporary control

Was a Least Squares Adjustment Used to Compute Coordinate? **No**

For Non-OPUS Based Solutions, List the Control Stations Used for Coordinate Computations (a minimum of 2 different control stations or 2 different time combinations from the same control station are required):

Obs. #	Control Station Name	Station Coordinates (Lat/Long)	Date	Time
1	CHRISTIANA N GPS	43°43'16.23186"/90°48'33.06427"	5/06/2013	16:09 19:00

* Please List Additional Control Stations Used on Back of Form

When a direct observation of the corner is not possible, and a combination of different GPS and/or conventional procedures must be used to determine coordinate values, provide a brief description of your procedures on the back of form.

(C) REASON FOR COORDINATE SUBMITTAL (check one):

- Being Filed With a New U.S. PLS Monument Record
- To Correct the Coordinates Listed on a Previously Filed PLS Monument Record
- To Provide Coordinates for a Previously Filed PLS Monument Record without Coordinates
- To Provide Supplemental Coordinates for a Previously Filed PLS Monument Record

R.L.S. & DATE OF PLS MONUMENT RECORD: _____

(D) AGENT(S) PERFORMING GPS OBSERVATIONS & COORDINATE COMPUTATION

1) **Jay P. Adams**

2)

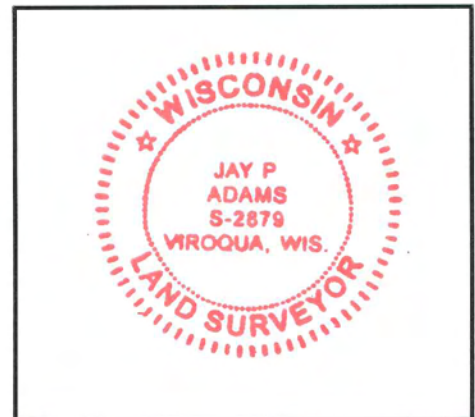
I, **JAY P. ADAMS** CERTIFY THAT THE COORDINATES PROVIDED ON THIS RECORD WERE DETERMINED BY ME OR UNDER MY DIRECTION AND CONTROL AND THAT THIS COORDINATE SUBMISSION FORM IS CORRECT AND COMPLETE TO THE BEST OF MY KNOWLEDGE AND BELIEF.

31 MAY 2013

SIGNATURE

DATE

Seal



* Please Provide Any Additional Notes/Information on Back of Form

CERTIFICATE

CERTIFIED LAND CORNER

No. 127

21504330000

I, Robert M. Lampman, do hereby certify that on the 13th day of December 1978, I found (evidence) (~~no evidence~~) of the SE corner of Section 33, T 15 N, R 4 W W, Fourth Principal Meridian, and I re-established said corner according to the Wisconsin Statutes as shown and described hereon.

History of original corner establishment:

Subdivision of Town 15 North, Range 4 West. Henry Maddin 1847, Deputy Surveyor.

Description of corner evidence found:

After having run extensive control traverse within Section 33 and having made extensive search for original corner and bearing trees in areas designated by recorded distance of original survey and/or resurveys and having done the same in areas of occupation of said corner I reset corner with aid of existing occupational evidence

Dated this 18th day of Jan. 1979.

Robert M. Lampman 5-1296

LAMPMAN & ASSOCIATES
Title

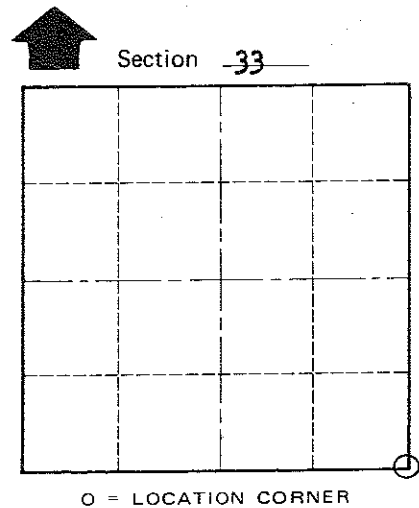
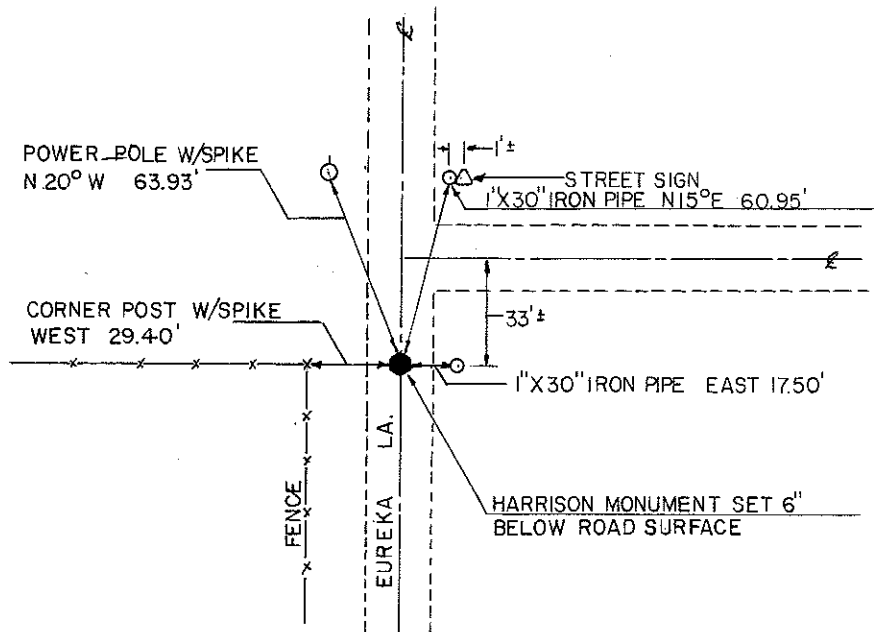
COUNTY SURVEYOR FORM NO. 1

Description of corner and witness monuments, references and accessories used to perpetuate the original or re-established location of this corner:

Witnesses to corner location:

Robert M. Lampman, Crew Chief

William Woodman



T 15 N R 4 W W
WISCONSIN

SURVEY CONTROL ORDER

Horizontal	_____
Vertical	_____

WISCONSIN COORDINATE SYSTEM

Corner	East (X)	North (Y)	Elevation (Z)	Zone
Control Sta. Name				

City, Village or Town Portland

County of Monroe