

CERTIFICATE

I, Douglas J. Malliet, do hereby certify that on the 11 day of May 19 78, I found (evidence) ~~XXXXXXXX~~ of the Northeast corner of Section 32, T 15 N, R 4 W ~~XX~~ Fourth Principal Meridian, and I re-established said corner according to the Wisconsin Statutes as shown and described hereon.

Dated this 17 day of May 19 78.

Douglas J. Malliet  
 REGISTERED LAND SURVEYOR, S-1266  
 Title

CERTIFIED LAND CORNER

No. 109

21504290000

History of original corner establishment:

No subsequent history of monument perpetuation since the original U.S. Government Survey.

Description of corner evidence found:

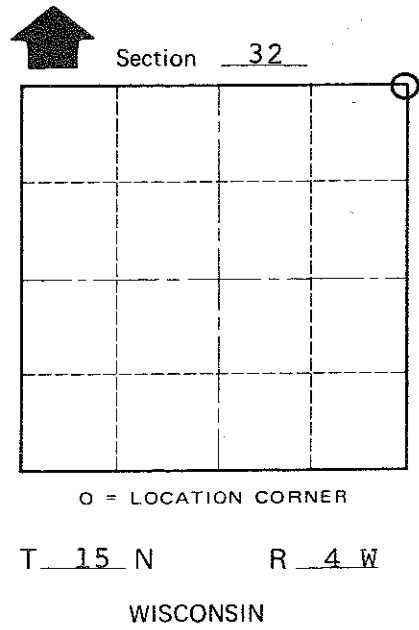
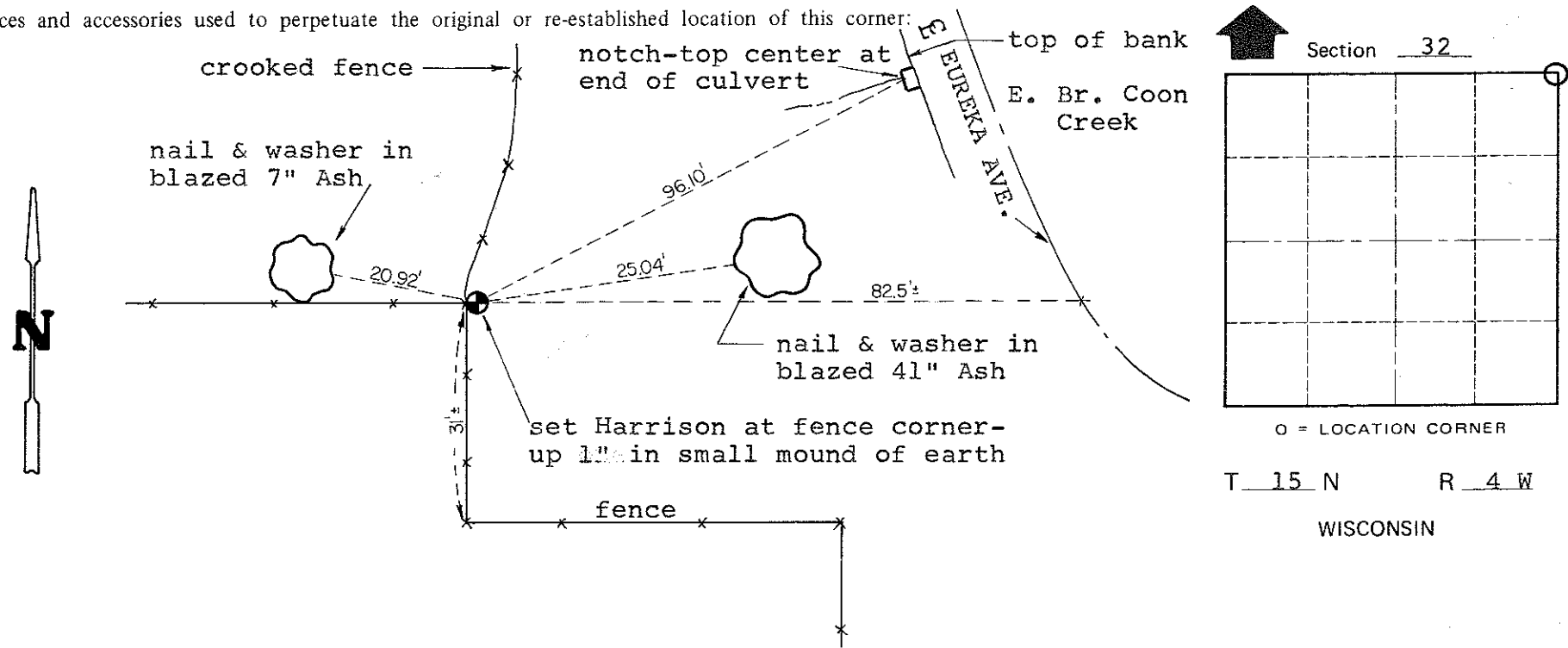
This corner was established at an old occupied fence corner. This location agrees well with the occupied N $\frac{1}{4}$  corner of Sec. 32, according to our measurements between the NE corner and the N $\frac{1}{4}$  corner of Sec. 32. Considering the surrounding hilly terrain and the age of the fence corner, the existing corner is the best evidence as to the proper location of this corner.

COUNTY SURVEYOR FORM NO. 1

Description of corner and witness monuments, references and accessories used to perpetuate the original or re-established location of this corner:

Witnesses to corner location:

Douglas J. Malliet  
Lawrence A. Feddersen



SURVEY CONTROL ORDER

Horizontal	_____
Vertical	_____

WISCONSIN COORDINATE SYSTEM

Corner	East (X)	North (Y)	Elevation (Z)	Zone
Control Sta. Name				

City, Village or Town of Portland

County of MONROE