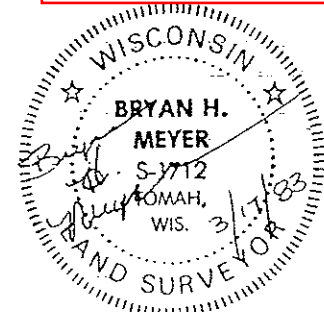


21504280000



Bryan H. Meyer
H. A. Sime and Associates
P. O. Box 705
Tomah, Wisconsin 54660
Phone: (608)-372-5392

I, Bryan H. Meyer, do hereby certify that on the 25th day of February 1983, I found (evidence) ~~of the~~ of the Northwest corner of Section 34, T 15 N, R 4 W. Fourth Principal Meridian, and I re-established said corner according to the Wisconsin Statutes as shown and described hereon.

Dated this 17th day of March 1983.

Bryan H. Meyer
Deputy County Surveyor
Title

History of corner establishment since Original Government Survey
Fred Holden was here in December of 1910. H. Sime was here in March of 1961 and set an iron pipe off an Original Government bearing tree (White Oak).

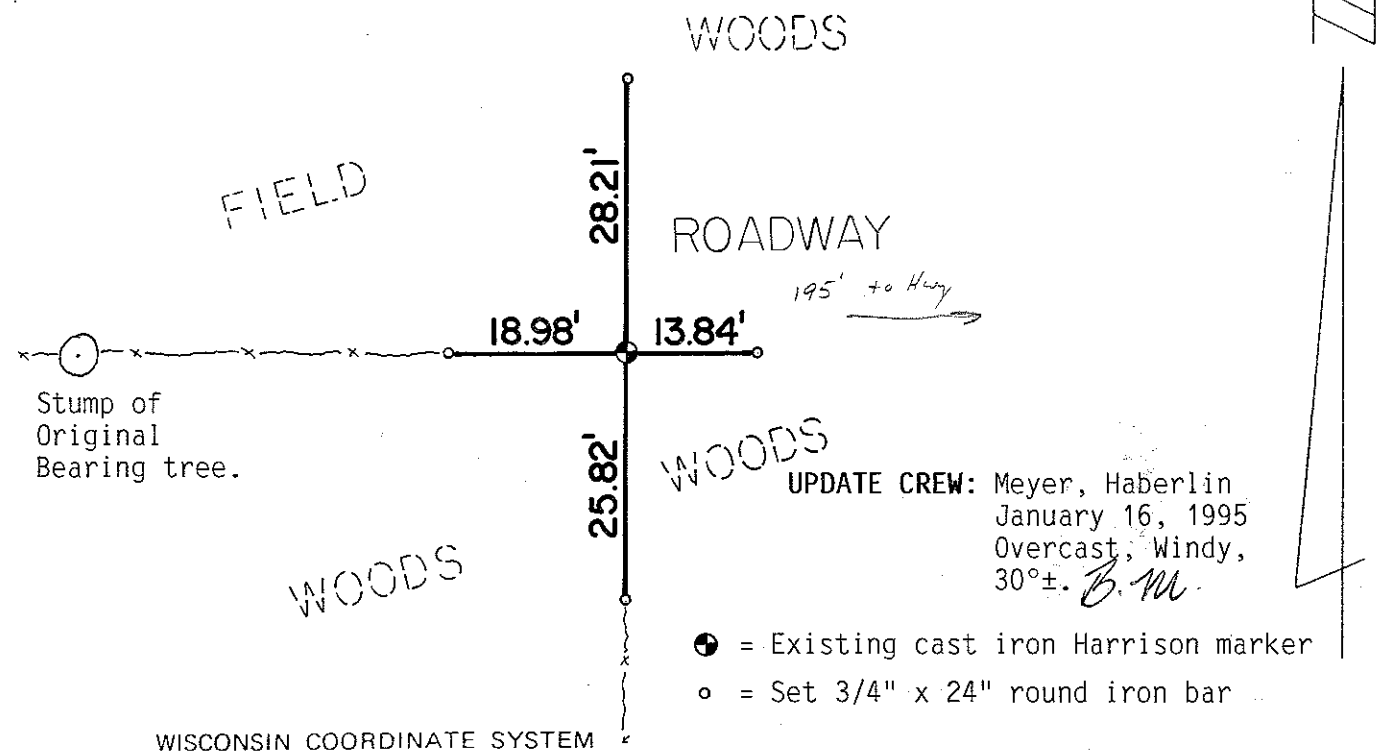
Description of corner evidence found:
Found Sime's iron pipe monument at a fence corner. Also found the Original Government bearing tree with scar still evident.

UPDATE: I happened to be passing by this corner and noticed that the Original Government bearing tree I show on my 1983 tie sheet had gone down. I stopped to check the other ties and found that my other two bearing trees had been cut down and the 1" iron pipe was bent. Found the Harrison in good condition with a sign on the South side. Established new ties as shown below.

Description of corner and witness monuments, references and accessories used to perpetuate the original or re-established location of this corner:

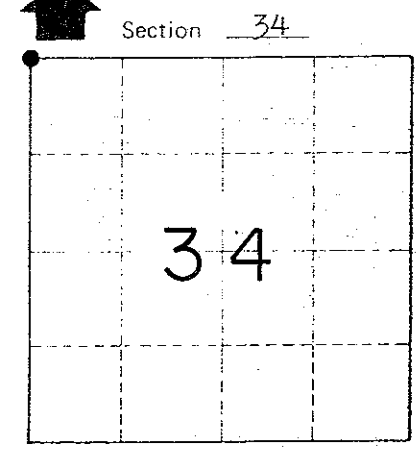
Witnesses to corner location:

Bryan H. Meyer



UPDATE CREW: Meyer, Haberlin
January 16, 1995
Overcast, Windy,
30°±. B.M.

- = Existing cast iron Harrison marker
- = Set 3/4" x 24" round iron bar



● = LOCATION CORNER
T 15 N R 4 W
WISCONSIN

SURVEY CONTROL ORDER

Horizontal
Vertical

WISCONSIN COORDINATE SYSTEM

Corner	East (X)	North (Y)	Elevation (Z)	Zone
Control Sta. Name				

~~Village of~~ Town of Portland
County of Monroe

COUNTY SURVEYOR FORM NO. 1

CERTIFICATE

I, Bryan H. Meyer, do hereby certify that on the 25th day of February 1983, I found (evidence) ~~of the~~ of the Northwest corner of Section 34, T 15 N, R 4 W Fourth Principal Meridian, and I re-established said corner according to the Wisconsin Statutes as shown and described hereon.

Dated this 17th day of March 1983.

Bryan H. Meyer
Deputy County Surveyor

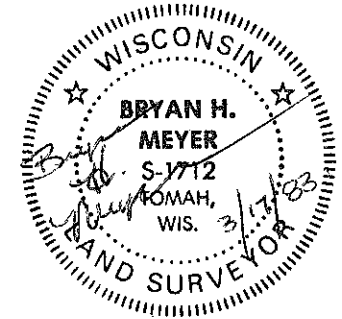
CERTIFIED LAND CORNER

History of corner establishment since Original Government Survey

Fred Holden was here in December of 1910. H. Sime was here in March of 1961 and set an iron pipe off an Original Government bearing tree (White Oak).

Description of corner evidence found:

Found Sime's iron pipe monument at a fence corner. Also found the Original Government bearing tree with scar still evident.



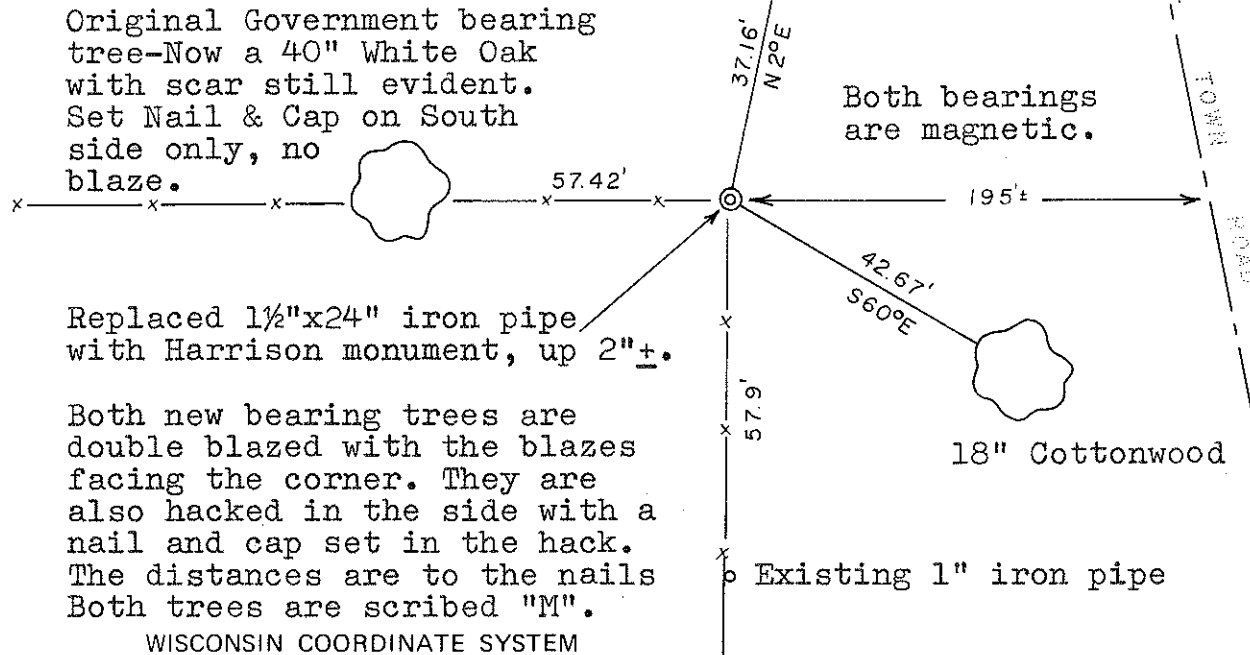
Approved: **HARLEY A. SIME**
MONROE CO. SURVEYOR

Description of corner and witness monuments, references and accessories used to perpetuate the original or re-established location of this corner:

Date: February 25, 1983 - 10:00 A.M.
Weather: Clear, Calm, +15°F

Witnesses to corner location:

Bryan H. Meyer

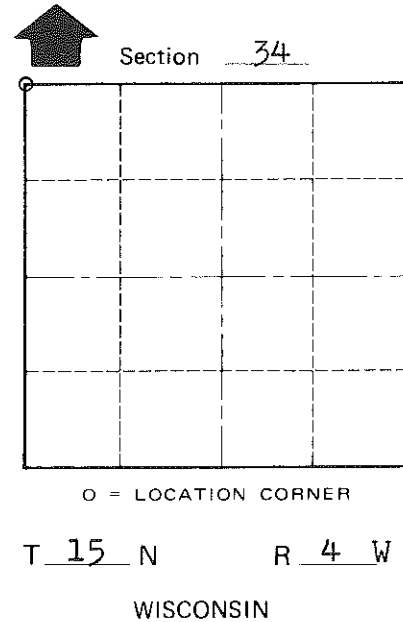


Original Government bearing tree-Now a 40" White Oak with scar still evident. Set Nail & Cap on South side only, no blaze.

Replaced 1½"x24" iron pipe with Harrison monument, up 2"±.

Both new bearing trees are double blazed with the blazes facing the corner. They are also hacked in the side with a nail and cap set in the hack. The distances are to the nails Both trees are scribed "M".

WISCONSIN COORDINATE SYSTEM



SURVEY CONTROL ORDER

Horizontal	_____
Vertical	_____

Corner	East (X)	North (Y)	Elevation (Z)	Zone
Control Sta. Name				

~~City, Village~~ Town of Portland
County of Monroe

COUNTY SURVEYOR FORM NO. 1