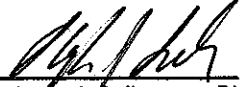


CERTIFICATE

I, Stephen J Solberg, do hereby certify that on the 10th day of January, 2007, I found (evidence) ~~(no evidence)~~ of the SW corner of Section 26, T15N, R4W, Fourth Principle Meridian, and I reestablished said corner according to the Wisconsin Statutes as shown and described hereon.

Dated this 10th day of ~~November~~ ^{January}, 2007.


 Stephen J Solberg, RLS 1846
 Eagle Ridge Surveying
 PO Box 213
 Wilton, WI 54670

CERTIFIED LAND CORNER

History of corner establishment since Original Government Survey

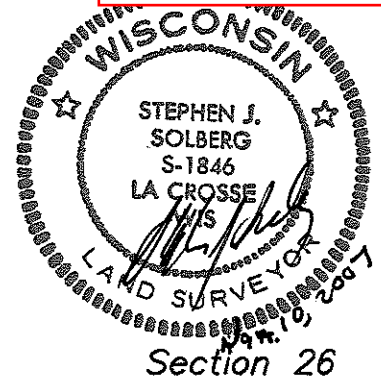
*Fred Holden was here in 1910 during a survey of Section 34.
 He also established and set iron pipes at the 20 Corner and 40 Corner West of this location during this survey.*

Description of corner evidence found:

*Found the iron pipes set by Fred Holden at both the 40 corner and 20 corner west of this location.
 Distances between these two measured well, but the distance from the 40 corner west to the N 1/4 Corner was short by 22 feet, but the terrain may account for this.
 Doubled the distance from 40 Corner to 20 Corner as the best evidence of the original location of this corner. Distances to the North, East and South fit real well.*

No. 105

21504270000



COUNTY SURVEYOR FORM NO. 1

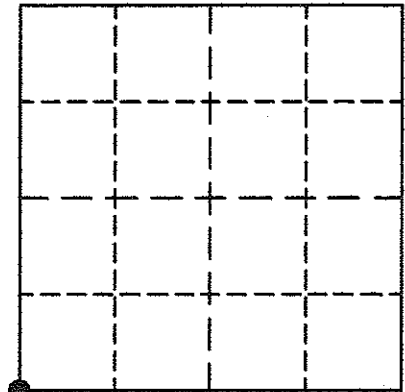
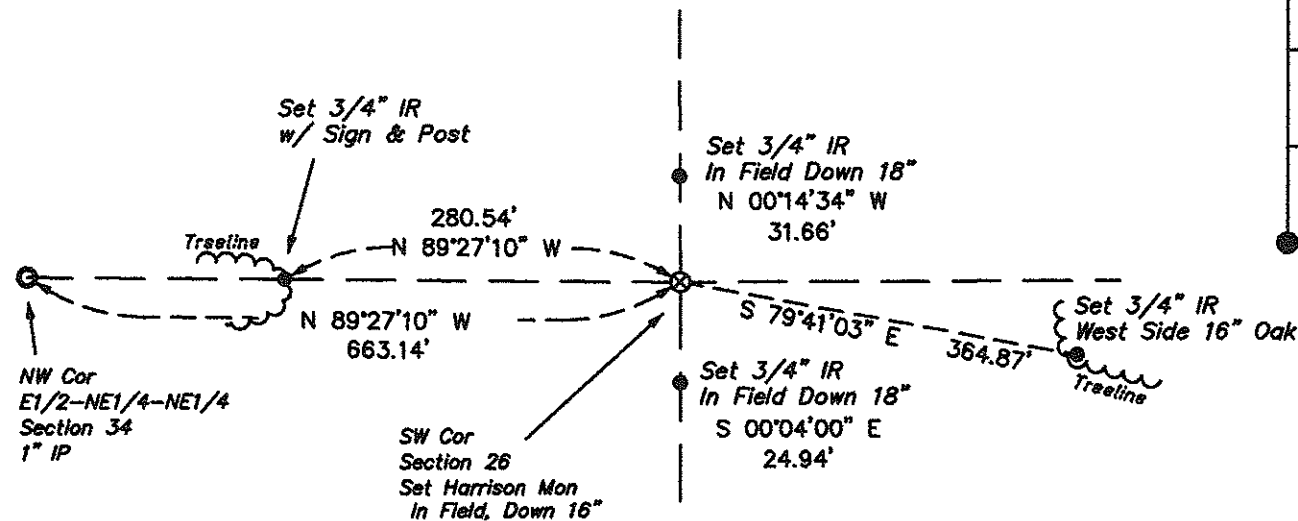
Description of corner and witness monuments, references and accessories used to perpetuate the original or re-established location of this corner:

Witness to corner location:

 Stephen J Solberg

 Laurence E Johns III

 Aaron Anderson



● = LOCATION CORNER
 T15N R4W
 WISCONSIN

SURVEY CONTROL ORDER

Horizontal
Vertical

MONROE COUNTY COORDINATE SYSTEM

Corner	East (X)	North (Y)	Elevation (Z)	Zone
	621034.17	305205.37		
Control Sta. Name				

City, Village or Town Portland
 County of Monroe