

21504262000

I, William C. Jung, do hereby certify that on the 13th day of September 1982, I found (evidence) ~~no evidence~~ of the West 1/4 corner of Section 25, T 15 N, R 4 W Fourth Principal Meridian, and I re-established said corner according to the Wisconsin Statutes as shown and described hereon.

Dated this 17th day of Jan. 1983

William C. Jung

Deputy County Surveyor
Title

History of corner establishment since Original Government Survey

Fred Holden was here in December of 1909 and set an iron pipe.

Description of corner evidence found:

Found a 1 1/4"x48" iron pipe..

Approved: **HARLEY A. SIME**
MONROE CO. SURVEYOR

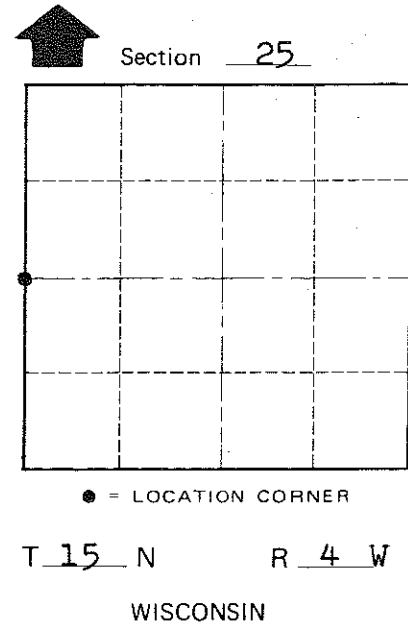
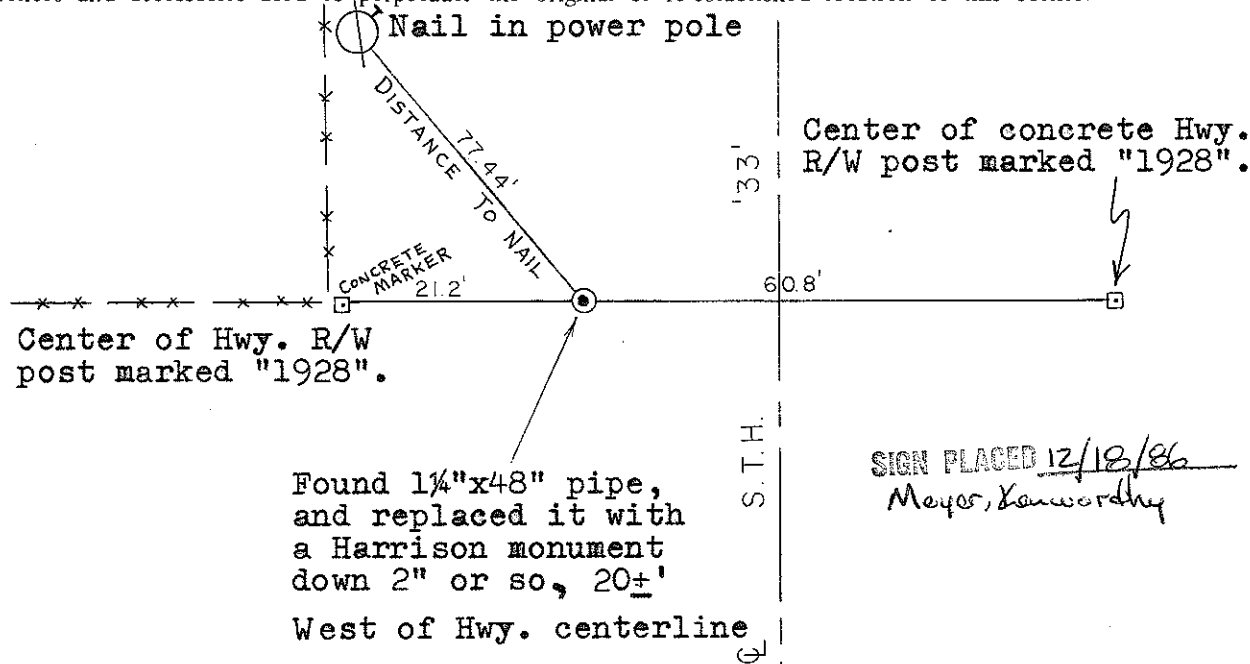
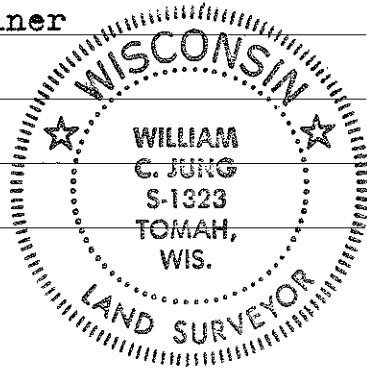
COUNTY SURVEYOR FORM NO. 1

Description of corner and witness monuments, references and accessories used to perpetuate the original or re-established location of this corner:

Witnesses to corner location:

William C. Jung

Melvin Pliner



SURVEY CONTROL ORDER

Horizontal	_____
Vertical	_____

WISCONSIN COORDINATE SYSTEM

Corner	East (X)	North (Y)	Elevation (Z)	Zone
Control Sta. Name				

~~City, Village or~~ Town of Portland
County of Monroe