

CERTIFICATE

I, Bryan H. Meyer, do hereby certify that on the 19th day of December 19 89, I found (evidence) ~~no evidence~~ of the South 1/4 corner of Section 26, T 15 N, R 4 W Fourth Principal Meridian, and I re-established said corner according to the Wisconsin Statutes as shown and described hereon.

Dated this 22nd day of Dec. 19 89.

Bryan H. Meyer
Deputy County Surveyor
Title

CERTIFIED LAND CORNER

History of corner establishment since Original Government Survey

Clayton Solberg shows a bearing and distance to this corner on the plat of Moen Second Addition to Moen Cemetery (Vol 6 Plats, Pg. 20). I was here in May of 1983 and set a survey point. Ron Parish was here in October of 1984 and shows an existing railroad spike at the corner.

Description of corner evidence found:

I found several problems with Solberg's cemetery plat. First of all he says it is located in the NW 1/4-SE 1/4 when it is actually in the NW 1/4-NE 1/4. He also shows the monuments for the lot corners to be iron pipes, however I found 1/2" round iron bars at most locations. Finally the tie distance shown to this corner is in my opinion off by 100'. Solberg's plat shows 376' when in reality it is closer to 476'. I set this corner off the North line of Solberg's cemetery plat assuming his tie distance should have been 476.00 feet. I really believe this corner should be at the road intersection but I used the cemetery plat to avoid future title problems.

Description of corner and witness monuments, references and accessories used to perpetuate the original or re-established location of this corner:

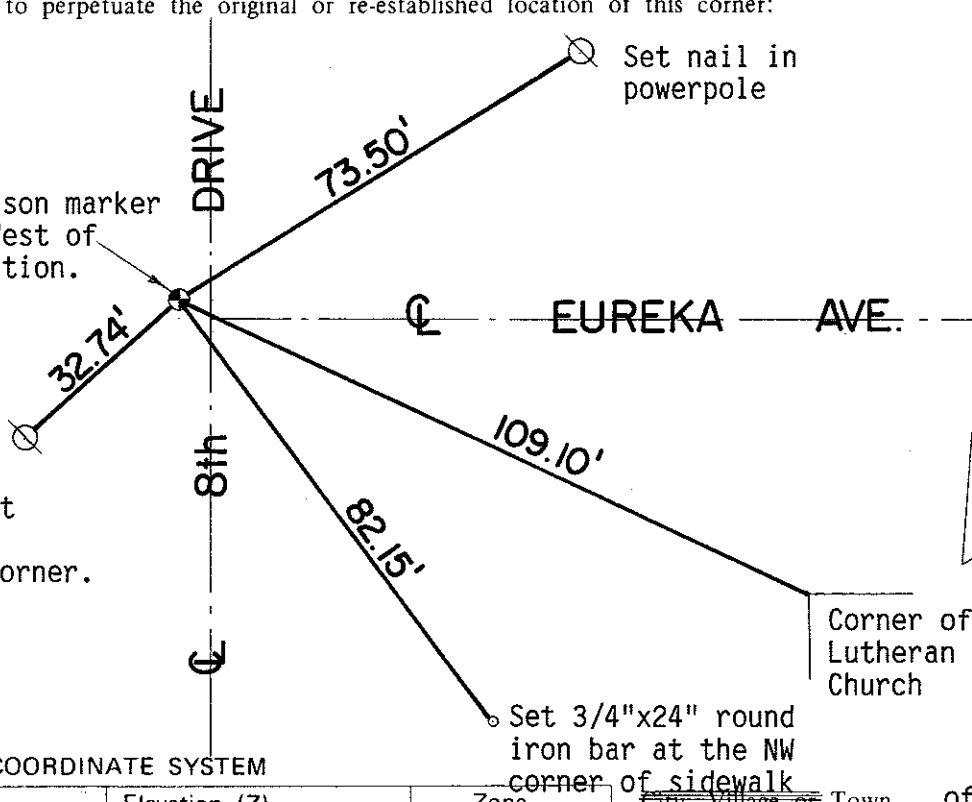
Crew: Forsythe, Kenworthy, Meyer
Date: December 19, 1989
Witnesses to corner location:

Brian Forsythe
John Kenworthy
Bryan H. Meyer

COUNTY SURVEYOR FORM NO. 1

Set cast iron Harrison marker 3'± North and 5'± West of centerline intersection.

Set nail in powerpole
Set sign next to powerpole facing the corner.



SURVEY CONTROL ORDER

Horizontal	_____
Vertical	_____

Corner	East (X)	North (Y)	Elevation (Z)	Zone
Control Sta. Name				

WISCONSIN COORDINATE SYSTEM

City/Village of Portland

County of Monroe

No. 104

21504260020



H. A. Sime and Associates
P. O. Box 705, Tomah, WI
Phone: (608)-372-5392

