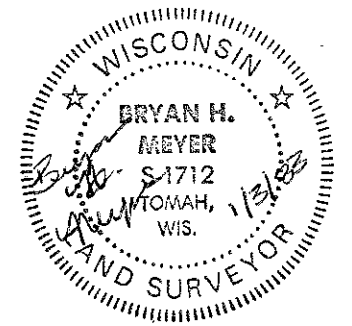


21504260000



I, Harley A. Sime, do hereby certify that on the fourteenth day of June 1982, I found (evidence) ~~of the~~ of the Southwest corner of Section 25, T15 N, R4 W Fourth Principal Meridian, and I re-established said corner according to the Wisconsin Statutes as shown and described hereon.

Dated this 15th day of June 1982.

Harley A. Sime - R. L. S. 355

County Surveyor, Monroe County

Approved: ^{Title}**HARLEY A. SIME**
MONROE CO. SURVEYOR

History of corner establishment since Original Government Survey
Fred Holden was here in December of 1909 and set a 1" iron rod.

Description of corner evidence found:

Found Holden's ^{IRON} down 3" in road, slightly bent, in centerline of Eureka Ave., on line with fences North and South. Rod is 1"x3 1/2". Replaced said rod with a Harrison monument.

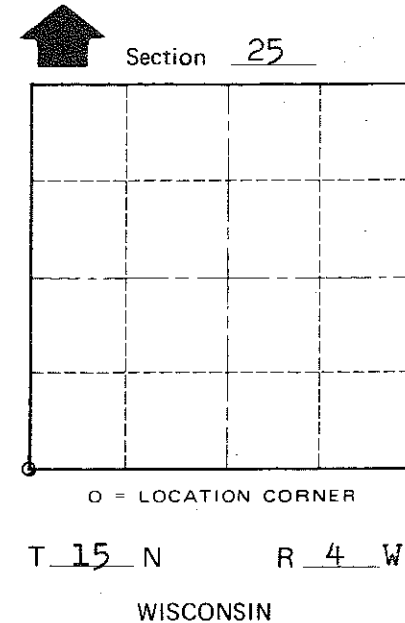
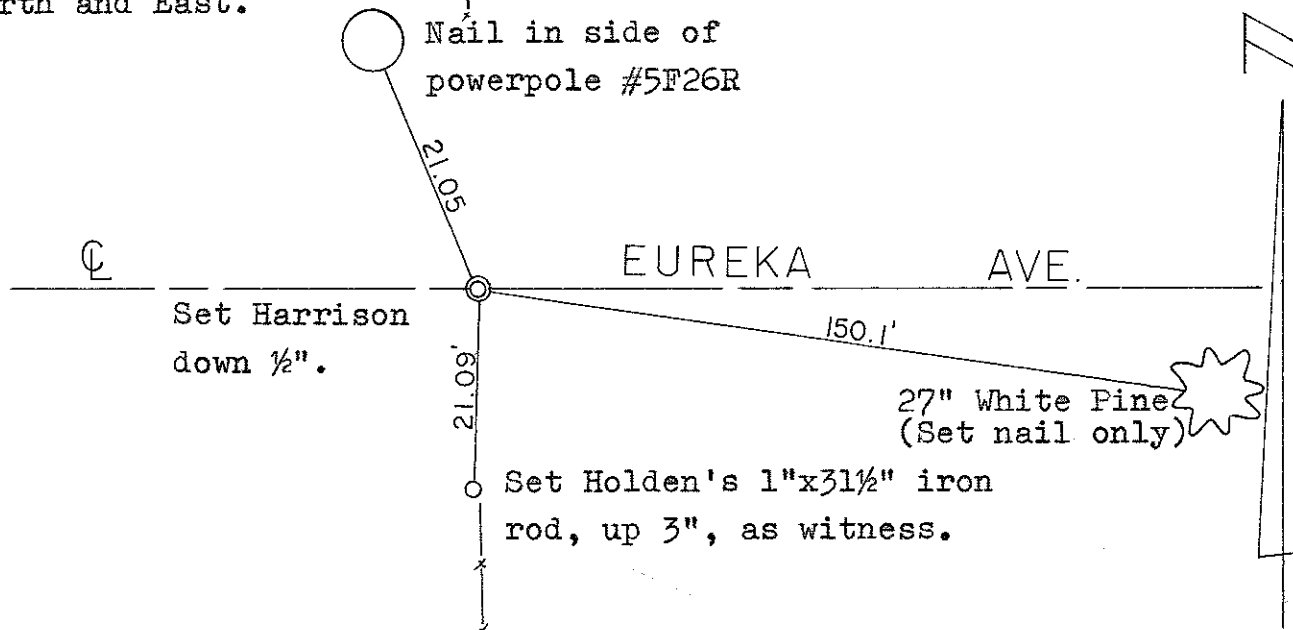
DESCRIPTION OF CORNER AND WITNESS MONUMENTS, REFERENCES AND ACCESSORIES USED TO PERPETUATE THE ORIGINAL OR RE-ESTABLISHED LOCATION OF THIS CORNER:

Set nail and cap offsets 2' North and East.

Witnesses to corner location:

Bryan Meyer

Brent Meyer



COUNTY SURVEYOR FORM NO. 1

SURVEY CONTROL ORDER

Horizontal	_____
Vertical	_____

WISCONSIN COORDINATE SYSTEM

Corner	East (X)	North (Y)	Elevation (Z)	Zone
Control Sta. Name				

~~City of Village of~~ Town of Portland
County of Monroe