

CERTIFICATE

CERTIFIED LAND CORNER

No. 74

21505242000



Bryan H. Meyer
H. A. Sime and Associates
P. O. Box 50
Tomah, Wisconsin 54660
Phone: (608)-372-5392

I, Bryan H. Meyer, do hereby certify that on the 30th day of October 19 97, I found (evidence) ~~XXXXXXXXXX~~ of the West 1/4 corner of Section 19, T 15 N, R 4 W Fourth Principal Meridian, and I re-established said corner according to the Wisconsin Statutes as shown and described hereon.

Dated this 27th day of Feb. 19 98.

Bryan H. Meyer

Deputy County Surveyor

History of corner establishment since Original Government Survey

Monroe County Surveyor Fred Holden visited this corner location in April of 1905 while doing work in Section 19. I found no recorded history of survey work involving this corner in the LaCrosse County records.

Description of corner evidence found:

I found a well established, sturdy two-way fence corner and accepted it as the corner. This corner location fits very well along the County line.

COUNTY SURVEYOR FORM NO. 1

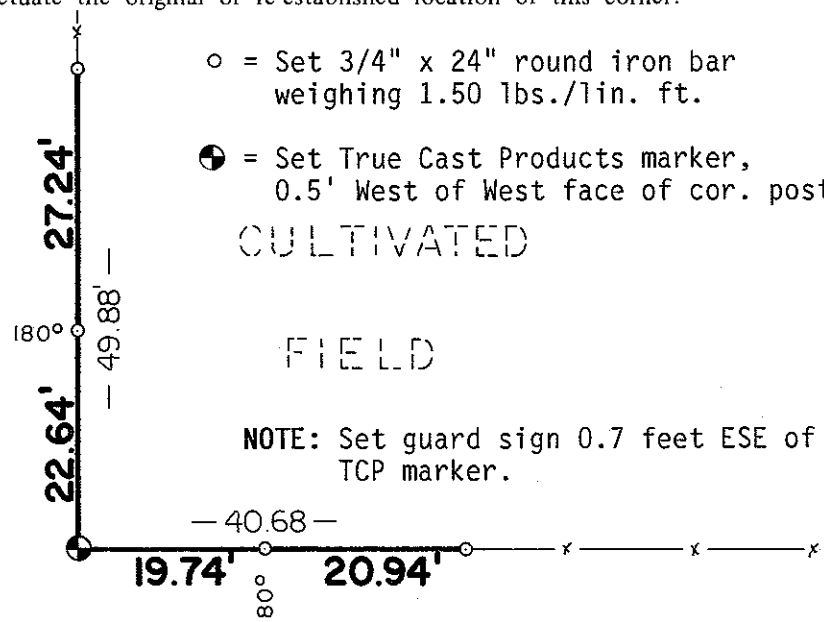
Description of corner and witness monuments, references and accessories used to perpetuate the original or re-established location of this corner:

Crew: Meyer, Malliet
Date: October 30, 1997
Weather: Overcast, 50°±
Witnesses to corner location:

Bryan H. Meyer

Douglas Malliet

PASTURE



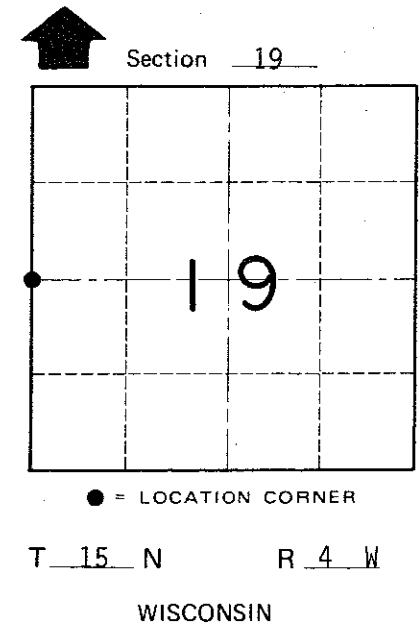
- = Set 3/4" x 24" round iron bar weighing 1.50 lbs./lin. ft.
- ⊕ = Set True Cast Products marker, 0.5' West of West face of cor. post

CULTIVATED

FIELD

NOTE: Set guard sign 0.7 feet ESE of TCP marker.

PASTURE



SURVEY CONTROL ORDER

Horizontal	_____
Vertical	_____

WISCONSIN COORDINATE SYSTEM

Corner	East (X)	North (Y)	Elevation (Z)	Zone
Control Sta. Name				

~~City, Village or~~ Town of Portland

County of Monroe