

21504240000

I, Bryan H. Meyer, do hereby certify that on the 2nd day of July 1982, I found (evidence) ~~XXXXXXXXXX~~ of the Northeast corner of Section 25, T 15 N, R 4 W Fourth Principal Meridian, and I re-established said corner according to the Wisconsin Statutes as shown and described hereon.

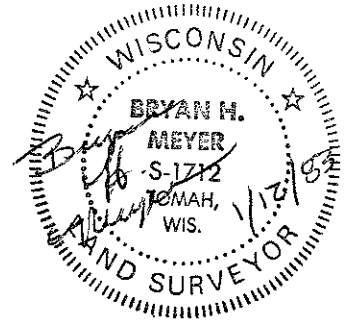
History of corner establishment since Original Government Survey
Fred Holden was here in May of 1907. Gary Sime was here in December of 1976, and established this corner, but was unable to set a marker @ the corner, due to frost.

Description of corner evidence found:

Found Sime's offset points (p.k. nails) and set a Harrison marker.

Dated this 12th day of Jan. 1983.

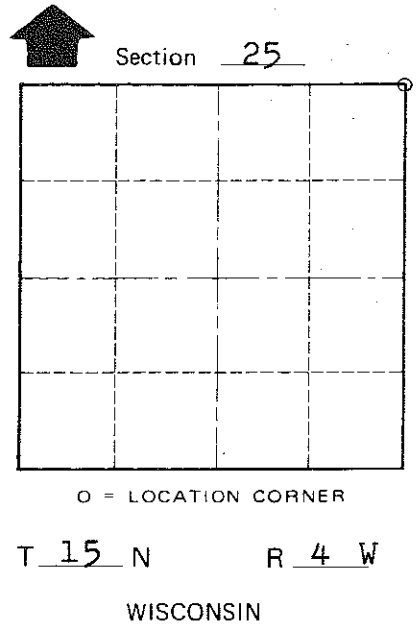
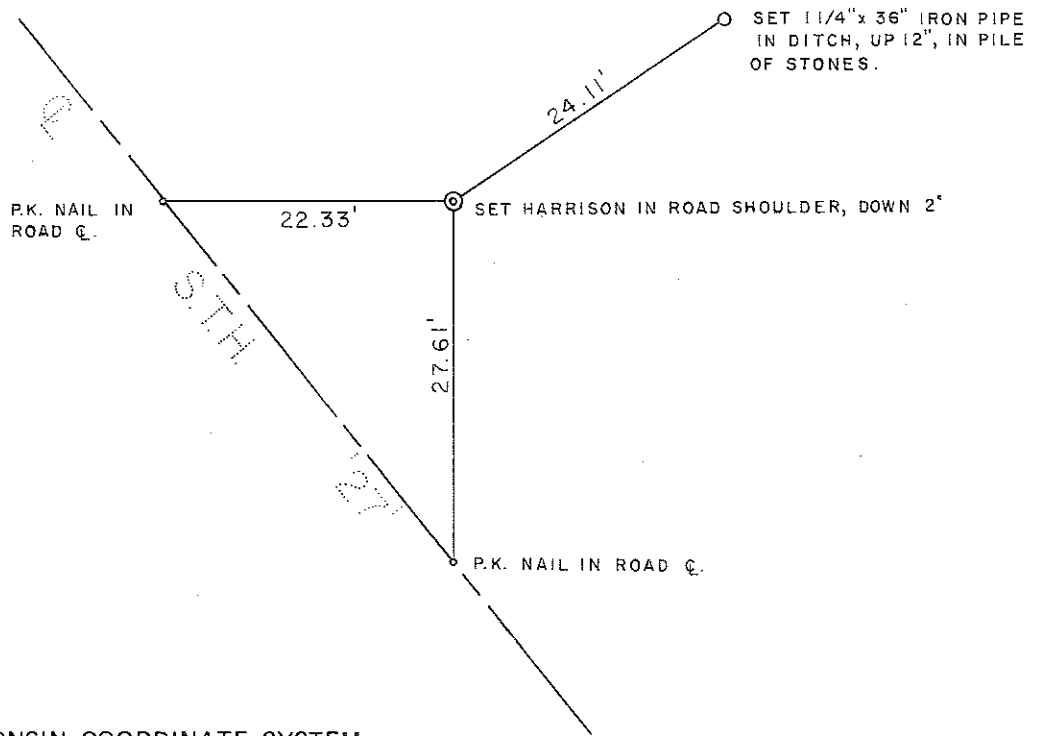
Bryan H. Meyer
Deputy County Surveyor
Title



COUNTY SURVEYOR FORM NO. 1

Description of corner and witness monuments, references and accessories used to perpetuate the original or re-established location of this corner:

Witnesses to corner location:
Bryan H. Meyer
John Fox



SURVEY CONTROL ORDER

Horizontal	_____
Vertical	_____

WISCONSIN COORDINATE SYSTEM

Corner	East (X)	North (Y)	Elevation (Z)	Zone
Control Sta. Name				

~~City, Village or~~ Town of Portland
County of Monroe