

CERTIFICATE

CERTIFIED LAND CORNER

No. 79

21504232000

I, Bryan H. Meyer, do hereby certify that on the 16<sup>th</sup> day of May 1983, I found (evidence) ~~no evidence~~ of the East 1/4 corner of Section 23, T 15 N, R 4 W Fourth Principal Meridian, and I re-established said corner according to the Wisconsin Statutes as shown and described hereon.

History of corner establishment since Original Government Survey

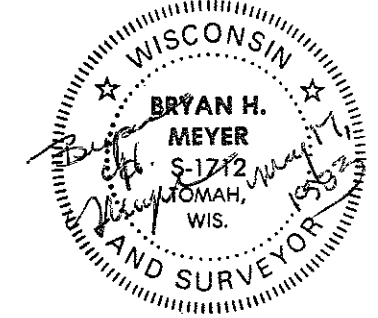
Nothing recorded.

Description of corner evidence found:

Accepted 2 way fence corner as the best available evidence.

Dated this 17<sup>th</sup> day of May 1983.

Bryan H. Meyer  
Deputy County Surveyor  
Title



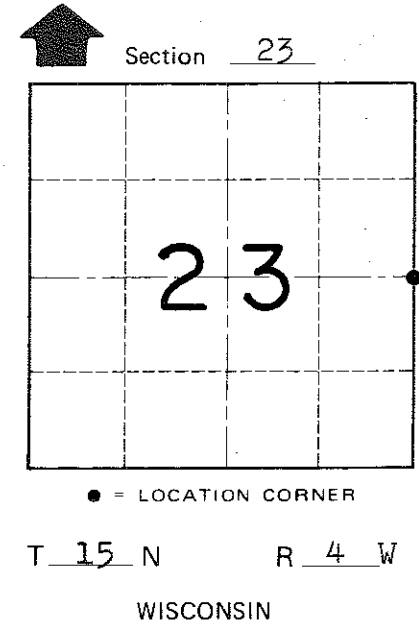
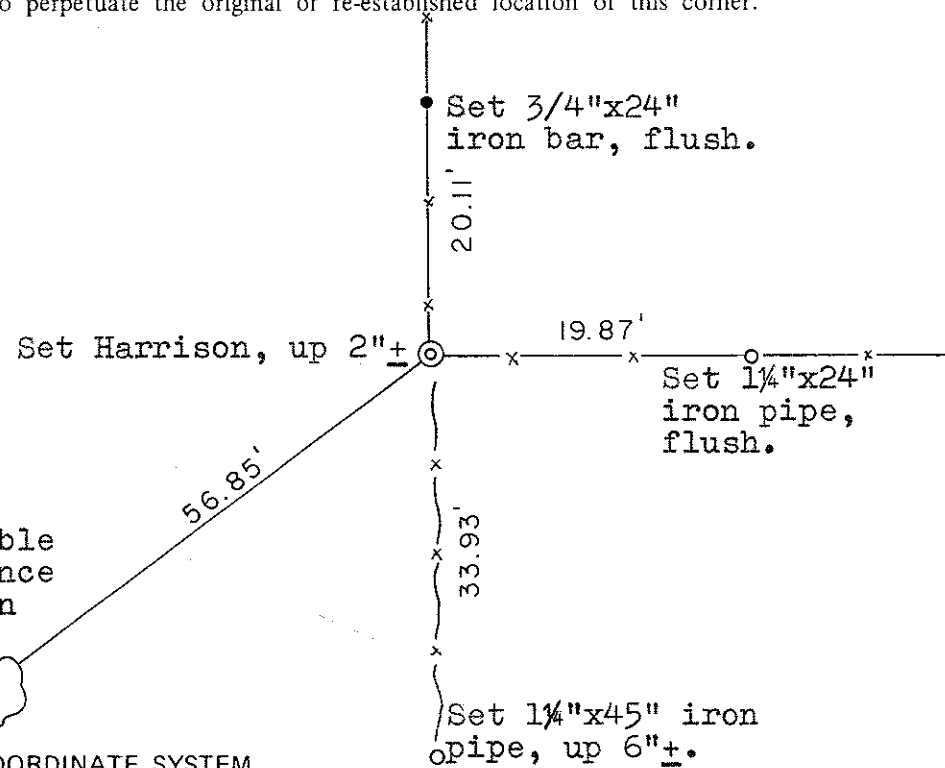
COUNTY SURVEYOR FORM NO. 1

Description of corner and witness monuments, references and accessories used to perpetuate the original or re-established location of this corner:  
Date: May 16, 1983 - 3:00 P.M.  
Weather: Overcast 60°±.

Witnesses to corner location:

Bryan H. Meyer - R.L.S. 1712  
Dallas Wilhite

Approved: **HARLEY A. SIME**  
**MONROE CO. SURVEYOR**



13" Hickory - Double blazed with distance to nail in hack on side of tree.

WISCONSIN COORDINATE SYSTEM

SURVEY CONTROL ORDER

Horizontal	_____
Vertical	_____

Corner	East (X)	North (Y)	Elevation (Z)	Zone
Control Sta. Name				

~~City/Village~~ Town of Portland

County of Monroe