

21504230020

I, Bryan H. Meyer, do hereby certify that on the 10th day of May 19 83, I found (evidence) ~~no evidence~~ of the North 1/4 corner of Section 26, T 15 N, R 4 W Fourth Principal Meridian, and I re-established said corner according to the Wisconsin Statutes as shown and described hereon.

Dated this 12th day of May 19 83.

Bryan H. Meyer
Deputy County Surveyor
Title

History of corner establishment since Original Government Survey

Nothing recorded
Description of corner evidence found:

I accepted the road centerline and the fences East and West as the best available evidence.

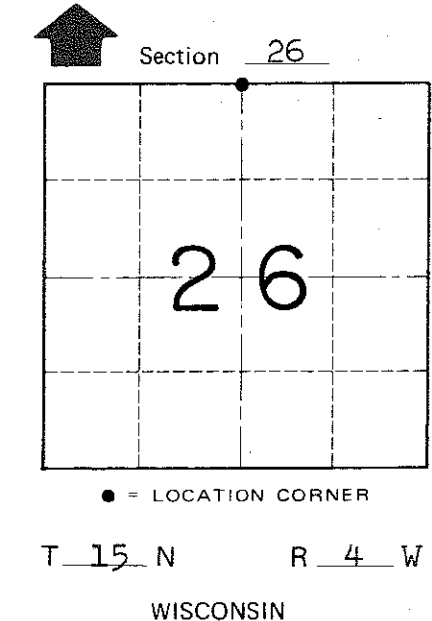
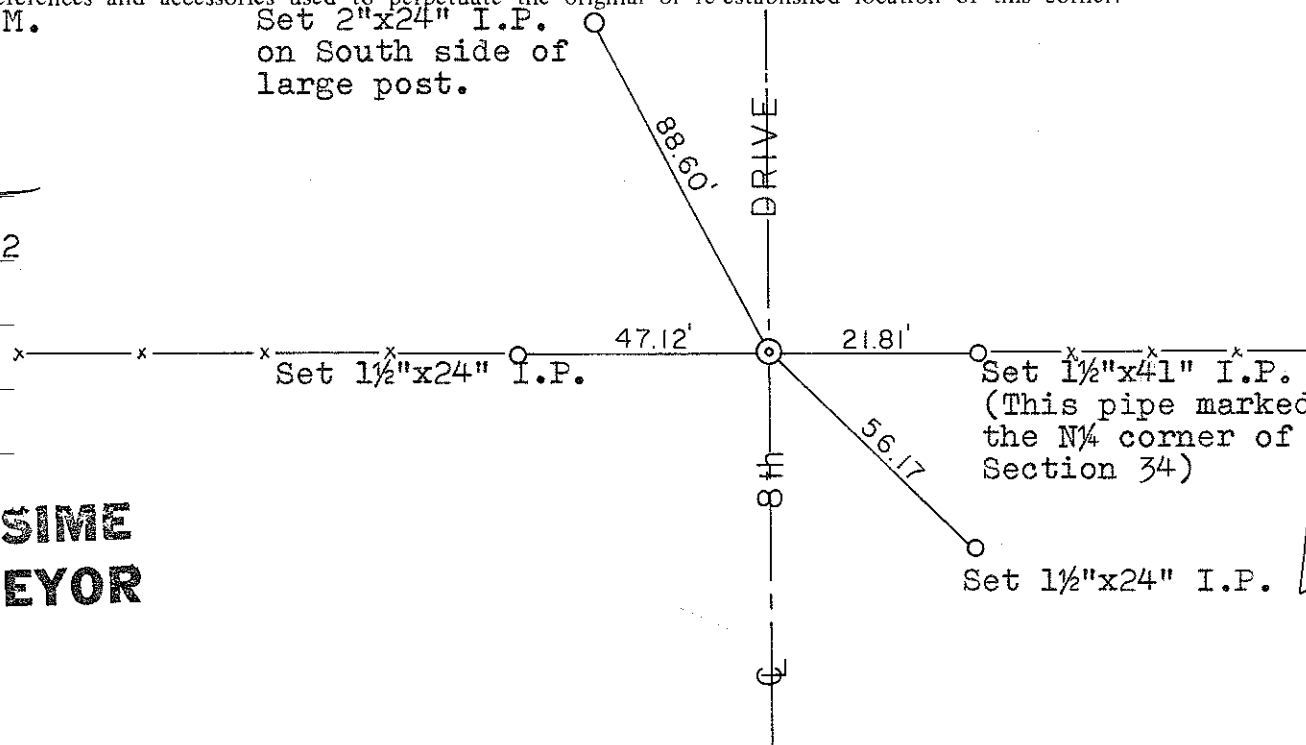
Description of corner and witness monuments, references and accessories used to perpetuate the original or re-established location of this corner:

Date: May 10, 1983 - 12:00 P.M.
Weather: Sunny, Breezy, 67°

Set 2"x24" I.P. on South side of large post.

Witnesses to corner location:

Bryan H. Meyer
Bryan H. Meyer - R.L.S. 1712



COUNTY SURVEYOR FORM NO. 1

Approved: **HARLEY A. SIME**
MONROE CO. SURVEYOR
SURVEY CONTROL ORDER

Table with 2 rows: Horizontal, Vertical

WISCONSIN COORDINATE SYSTEM

Table with 5 columns: Corner, East (X), North (Y), Elevation (Z), Zone

~~City, Village or~~ Town of Portland
County of Monroe