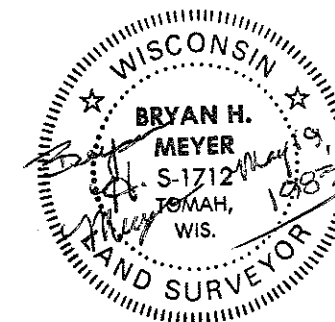


CERTIFICATE

CERTIFIED LAND CORNER

No. 83

21504230000



I, Bryan H. Meyer, do hereby certify that on the 18th day of May 19 83, I found ~~nothing~~ (no evidence) of the Northeast corner of Section 26, T 15 N, R 4 W Fourth Principal Meridian, and I re-established said corner according to the Wisconsin Statutes as shown and described hereon.

Dated this 19th day of May 19 83.

Bryan H. Meyer
Deputy County Surveyor
Title

History of corner establishment since Original Government Survey

Nothing recorded.

Description of corner evidence found:

I established this corner by setting it on line and equidistant between the East 1/4 corner of Section 23 and the East 1/4 corner of Section 26.

Description of corner and witness monuments, references and accessories used to perpetuate the original or re-established location of this corner:

Date: May 18, 1983 - 10:00 A.M.
Weather: Overcast, Rain, 50°±.

Witnesses to corner location:

Bryan H. Meyer - R.L.S. 1712

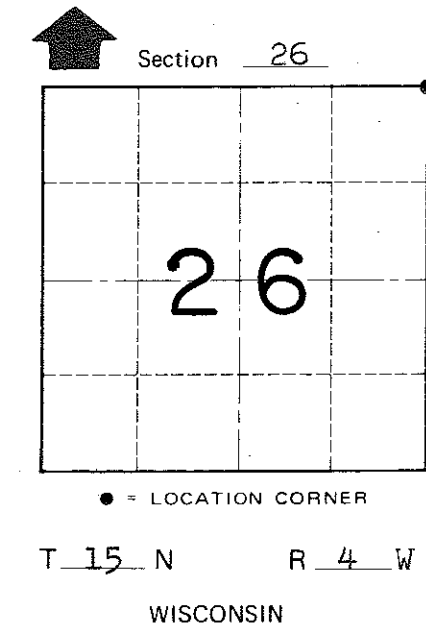
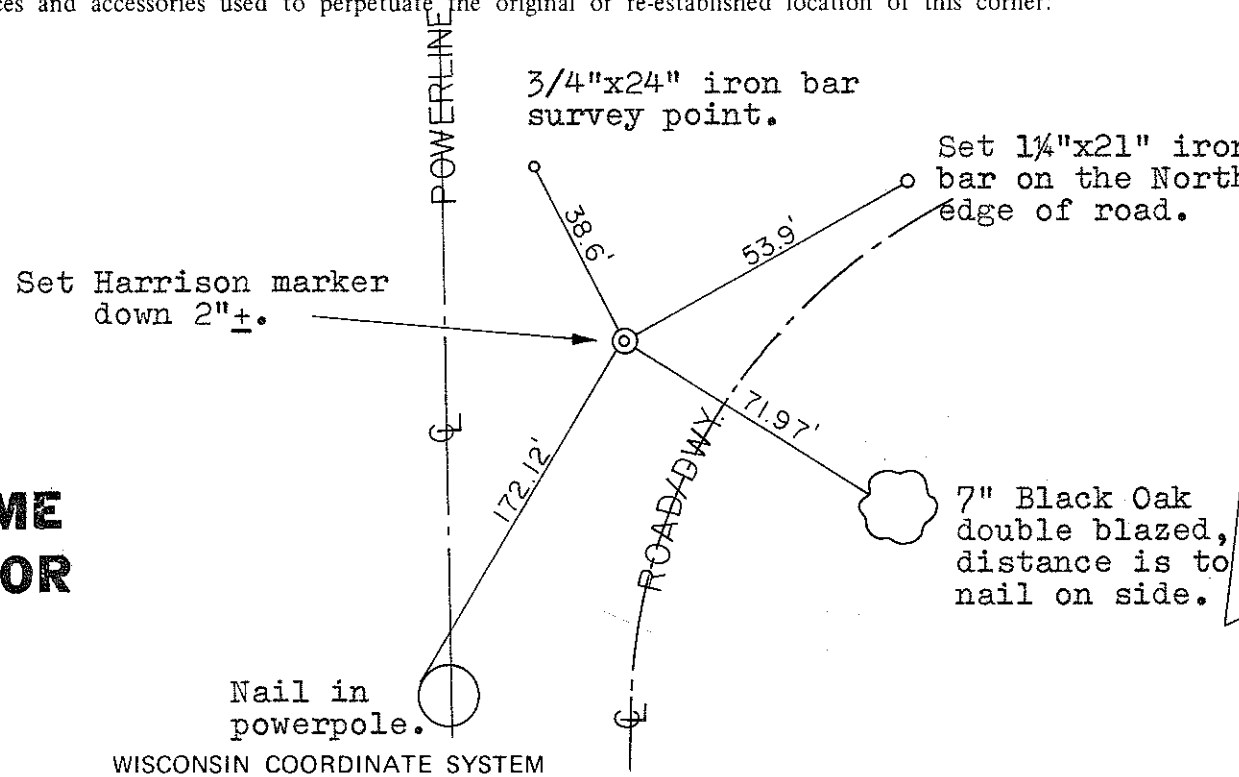
Dallas Wilhite

**Approved: HARLEY A. SIME
MONROE CO. SURVEYOR**

SURVEY CONTROL ORDER

Horizontal	_____
Vertical	_____

Corner	East (X)	North (Y)	Elevation (Z)	Zone
Control Sta. Name				



COUNTY SURVEYOR FORM NO. 1

~~City, Village or~~ Town of Portland
County of Monroe