

CERTIFICATE

I, Laurence E Johns III, do hereby certify that on the 1st day of April, 2011, I found evidence of the S 1/4 Corner of Section 22, T15N, R4W, Town of Portland, and I re-established said corner according to the Wisconsin Statutes as shown and described hereon.

Dated this 1st day of April, 2011.

Laurence E Johns III
 Laurence E Johns III RLS 2804
 Eagle Ridge Surveying, LLC
 PO Box 213
 Wilton, WI 54670

CERTIFIED LAND CORNER

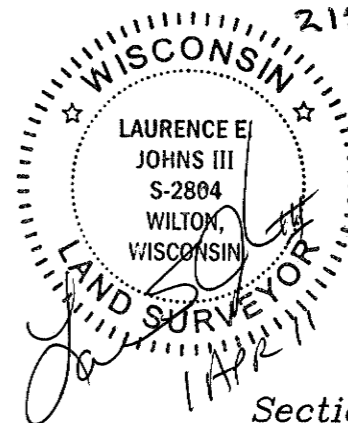
History of corner establishment since Original Government Survey

Henry Maddin established this corner in February 1847.
 Curt Cummer was at this corner during a survey in Section 22 and re-established this corner and set a 3/4" IR.

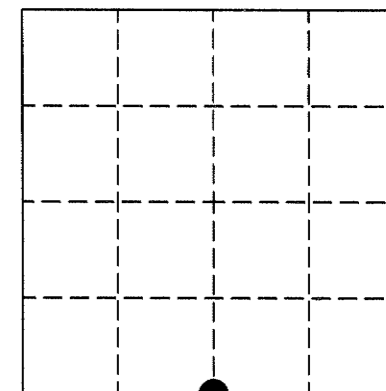
Description of corner evidence found:

I found the 3/4" Iron Rod set by Cummer at 6'± Southeast of a fence corner. The fence line to the North does not run due North but seems to follow the creek edge. The government survey call for a creek to be 45' (0.685 ch) West of this corner. The current creek bank is 43'± West. The current fence corner matches the prorated location very well. Cummer appears to have used the prorated location for his corner. I accepted his corner and replaced it with a TCP Monument.

No. 86
21504220020



Section 22



● = LOCATION CORNER
 T15N R4W
 WISCONSIN

See Section Information on Reverse

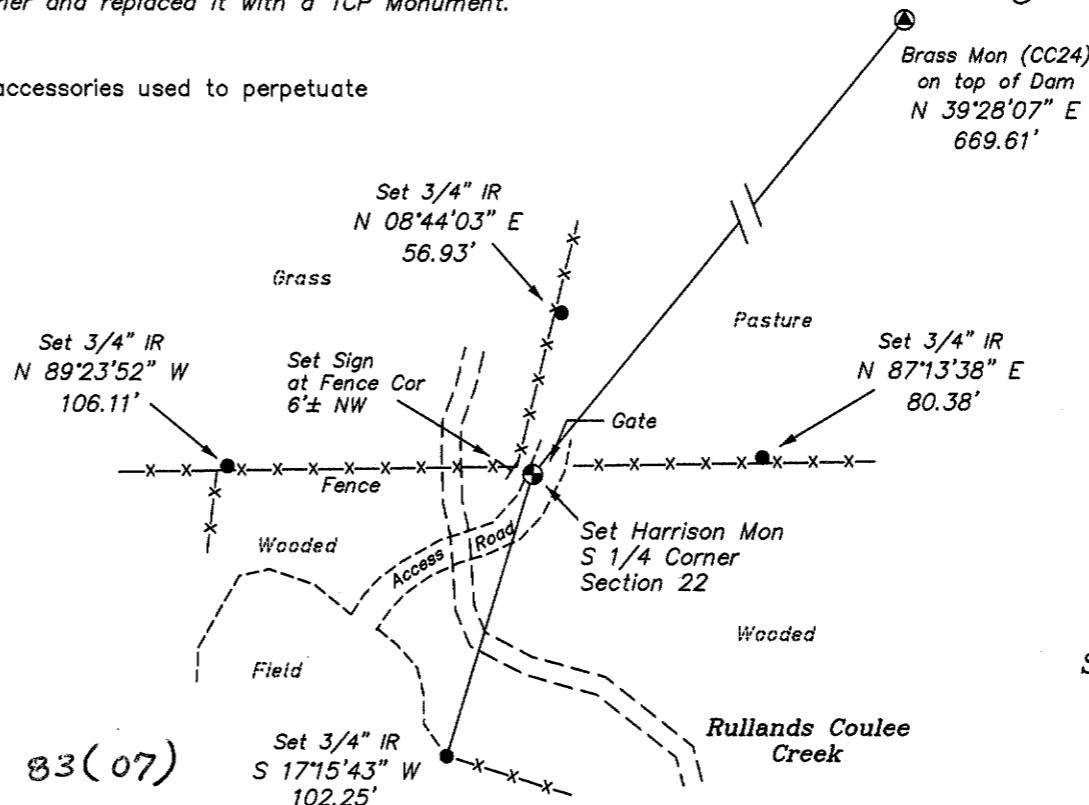
COUNTY SURVEYOR FORM NO. 1

Description of corner and witness monuments, references and accessories used to perpetuate the original or re-established location of this corner:

Witness to corner location:

 Laurence E Johns III

 Al Hoff



b.d.
 NAD 83(07)

MONROE COUNTY COORDINATE SYSTEM

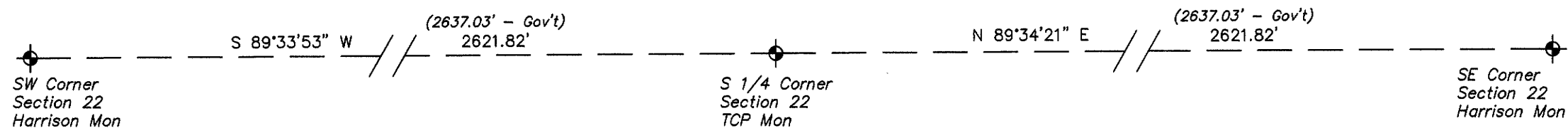
SURVEY CONTROL ORDER

| |
|------------|
| Horizontal |
| Vertical |

| | North (Y) | East (X) | Elevation (Z) | Zone |
|-------------------------------------|------------|------------|---------------|------|
| S 1/4 Corner | 310476.829 | 618381.610 | | |
| Control Sta. Name Portland C GPS | 315742.586 | 618145.926 | | |

City, Village or Town Portland
 County of Monroe

Section 22



Section 27