

CERTIFICATE

I, Robert M. Lampman, do hereby certify that on the 16th day of April 1996, I found ~~(evidence)~~ (no evidence) of the S 1/4 corner of Section 21, T15 N, R 4 W Fourth Principal Meridian, and I re-established said corner according to the Wisconsin Statutes as shown and described hereon.

Dated this 23rd day of April 1996.

Robert M. Lampman

R.L.S S-1296
Title

CERTIFIED LAND CORNER

No. 88

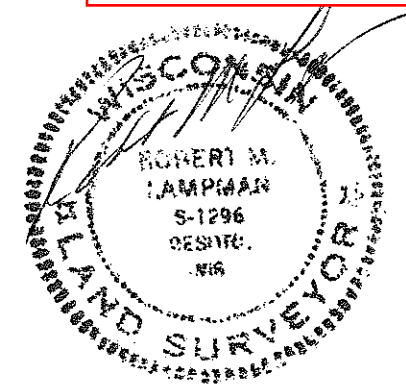
21504210020

History of corner establishment since Original Government Survey

No record of this corner since the original Government Survey.

Description of corner evidence found:

Set corner at recorded distance from the SE corner of Section 21. Corner also on line between the SE and SW corners of Section 21. Varified this location using N 1/4 corner of Section 21, occupation at the center of Section 21 and old occupation on the n/s one-quarter line North of this corner.



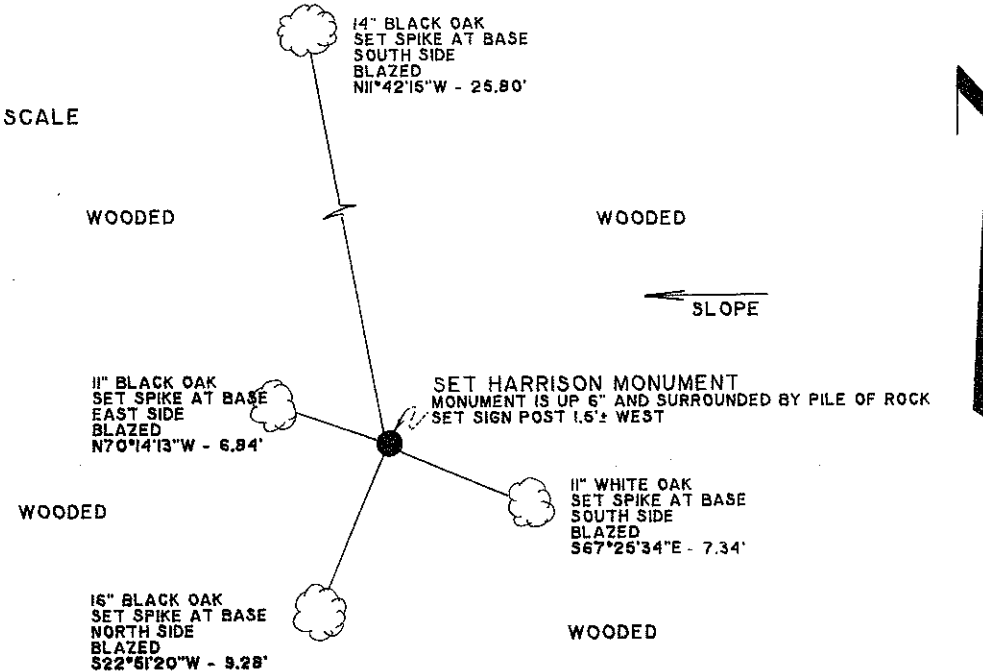
Description of corner and witness monuments, references and accessories used to perpetuate the original or re-established location of this corner:

Witnesses to corner location:

Douglas Malliet R.L.S.

Jessica A. Zamor

NOT TO SCALE

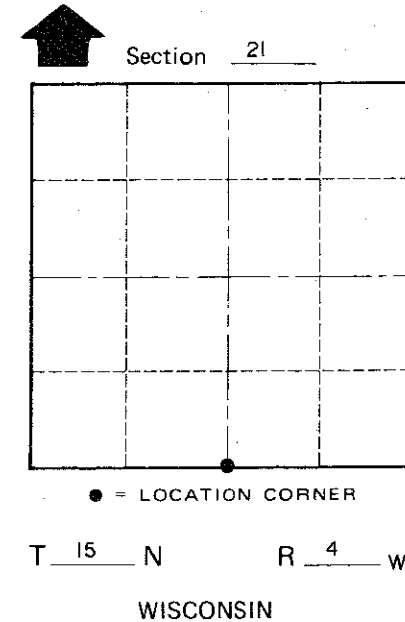


SURVEY CONTROL ORDER

Horizontal	_____
Vertical	_____

WISCONSIN COORDINATE SYSTEM

Corner	East (X)	North (Y)	Elevation (Z)	Zone
Control Sta. Name				



City, Village or Town Portland
County of Monroe

COUNTY SURVEYOR FORM NO. 1