

U.S. PUBLIC LAND CORNER MAINTENANCE

Corner ID : E1/4 Sec.20, T15N-R4W

21504202000

DATE	CREW	MONUMENT TYPE
June 13, 2014	Zachariah P. Dechant Gary L. Dechant	Found bottom section of Harrison, down 14" 15' east of centerline of Nature Road, on line with Fence to east, 12' north of driveway centerline Fire no. 28516. Set large 12" long spike over top of Harrison, mag nail offsets 1' north and east

References:

- 1) Set 3/4"x24" hex iron bar, down 8" between tele. Ped & street sign
- 2) Set 3/4"x24" hex iron bar, down 10", 11' south of power pole
- 3) Set 3/4"x24" hex iron bar, down 10" in pasture
- 4) Set 3/4"x24" hex iron bar, down 4", south side of huge stone

Bearing	Distance
N28W	66.70'
N70E	41.64'
S28E	41.02'
S70W	47.64'

COORDINATES:

NOTE: Reference markers and Harrison set on straight lines

Gary L. Dechant

June 13, 2014

CERTIFICATE

CERTIFIED LAND CORNER

No. 76

21504202000

I, Ronald D. Parish, do hereby certify that on the 5th day of May, 1989, I found ~~evidence~~ (no evidence) of the East 1/4 corner of Section 20, T15 N, R 4 W. Fourth Principal Meridian, and I re-established said corner according to the Wisconsin Statutes as shown and described hereon.

Dated this 18th day of May, 1989.

Ronald D. Parish

Registered Land Surveyor
Title

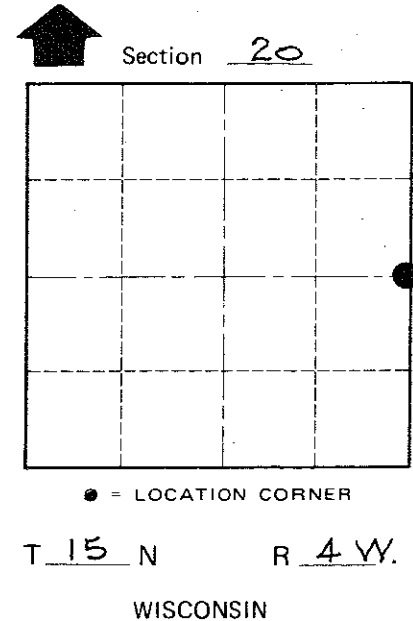
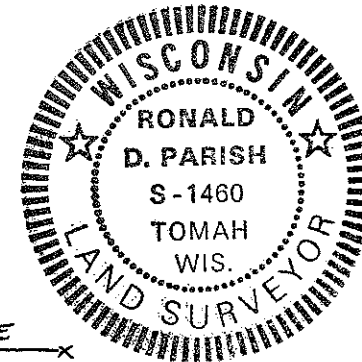
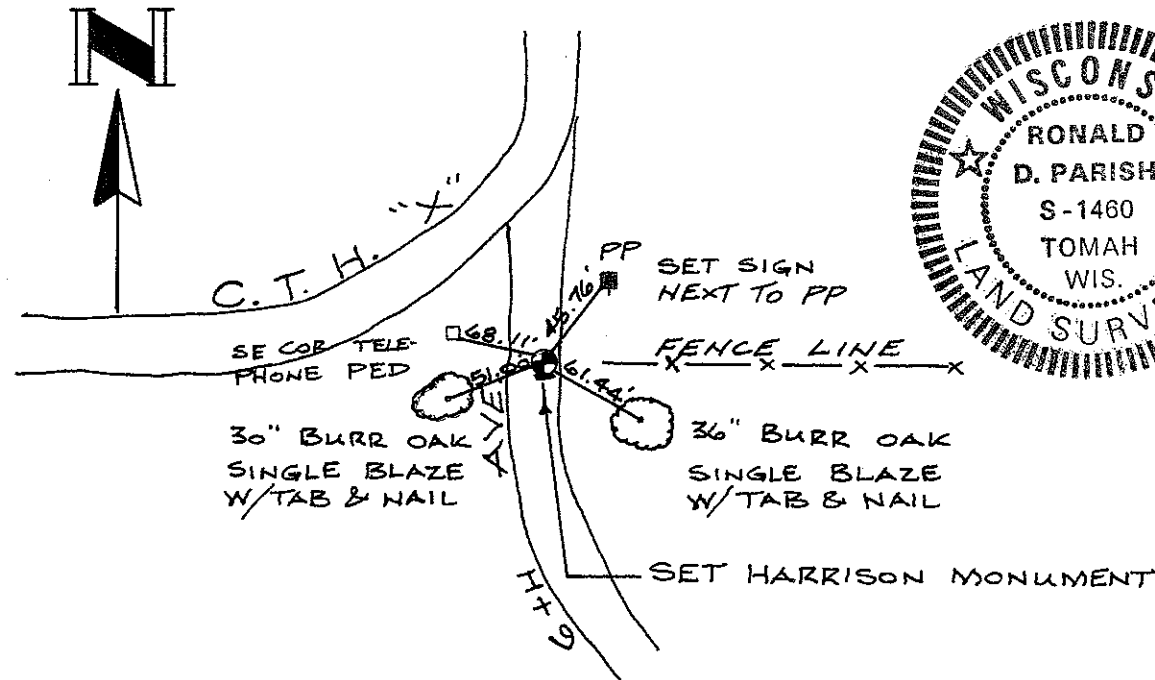
History of corner establishment since Original Government Survey
No known history since the Original Government Survey

Description of corner evidence found:
Found no evidence of corner. Set corner at intersection of North centerline and west centerline of C.T.H. "X" and fenceline to the East. This fits the dimension to the South very well. (2641.66')

Description of corner and witness monuments, references and accessories used to perpetuate the original or re-established location of this corner:

Witnesses to corner location:

Ronald D. Parish



COUNTY SURVEYOR FORM NO. 1

SURVEY CONTROL ORDER

Horizontal	_____
Vertical	_____

WISCONSIN COORDINATE SYSTEM

Corner	East (X)	North (Y)	Elevation (Z)	Zone
Control Sta. Name				

City, Village or Town PORTLAND

County of MONROE