

CERTIFICATE

I, William C. Jung, do hereby certify that on the 18th day of December 1979. I found (evidence) () of the NORTH 1/4 corner of Section 29, T 15 N, R 4 W Fourth Principal Meridian, and I re-established said corner according to the Wisconsin Statutes as shown and described hereon.

Dated this 5th day of Feb. 1981.

William C. Jung

William C. Jung, R.L.S. 1323

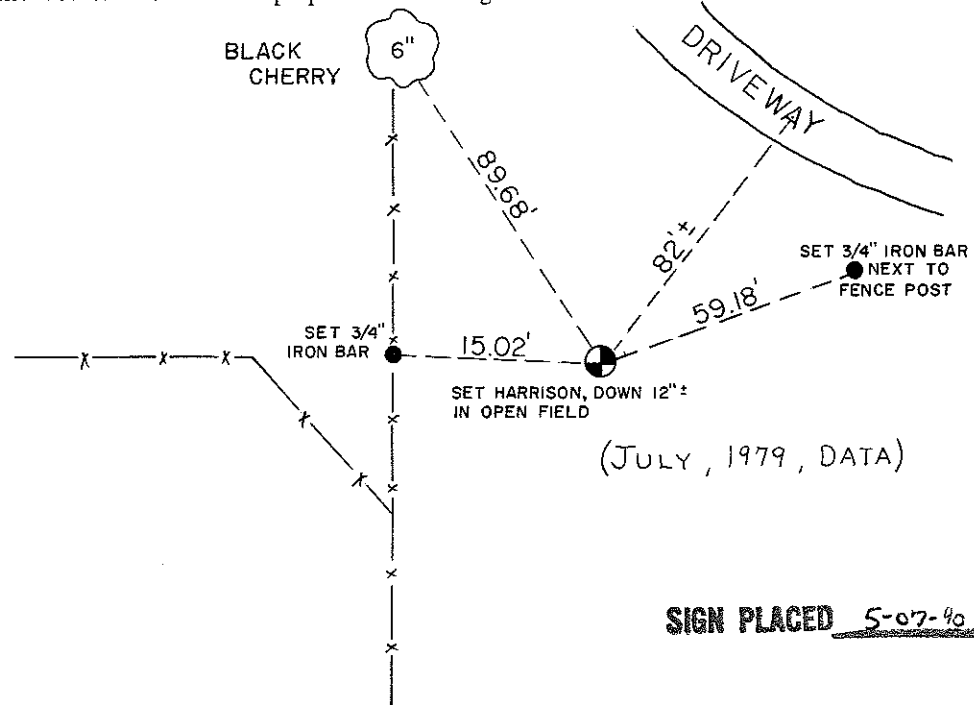
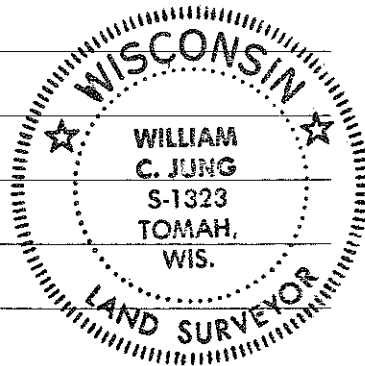
Approved: ^{Title} **HARLEY A. SIME**
MONROE CO., SURVEYOR

COUNTY SURVEYOR FORM NO. 1

Description of corner and witness monuments, references and accessories used to perpetuate the original or re-established location of this corner:

Witnesses to corner location:

Meyer
Dade
Jung
Hayden
Tormoen



(JULY, 1979, DATA)

SIGN PLACED 5-07-80 *H. Sime*



No. 90
21504200020

CERTIFIED LAND CORNER

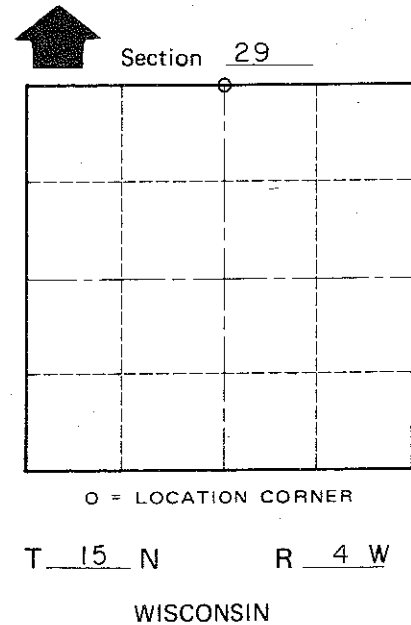
History of original corner establishment:

O. R. Dahl was at this corner in January of 1869.
Harley Sime set an iron pie at the occupied corner in 1964.

Description of corner evidence found:

Found Sime's pipe, removed it, and set a Harrison marker.
The monument is at the occupied corner. (Meyer & Dade, July, 1979)

Found the Harrison, December, 1979.



SURVEY CONTROL ORDER

Horizontal _____
Vertical _____

WISCONSIN COORDINATE SYSTEM

Corner	East (X)	North (Y)	Elevation (Z)	Zone
Control Sta. Name				

~~City, Village~~ or Town Portland
County of Monroe