

I, Garold A. Sime, do hereby certify that on the 23rd day of February 1990, I found (evidence) (~~no evidence~~) of the W<sup>1</sup>/<sub>4</sub> corner of Section 20, T 15 N, R 4 W Fourth Principal Meridian, and I re-established said corner according to the Wisconsin Statutes as shown and described hereon.

Dated this 20th day of Dec. 1990.

Garold A. Sime

Monroe County Surveyor  
Title

History of corner establishment since Original Government Survey

Fred Holden set a stone at this corner in April of 1905.  
Harley Sime found this corner in 1964.

Description of corner evidence found:

Found Stone Monument down 14" in corn field. Replaced same with Cast Iron Harrison Monument.

21504192000

COUNTY SURVEYOR FORM NO. 1

Description of corner and witness monuments, references and accessories used to perpetuate the original or re-established location of this corner:

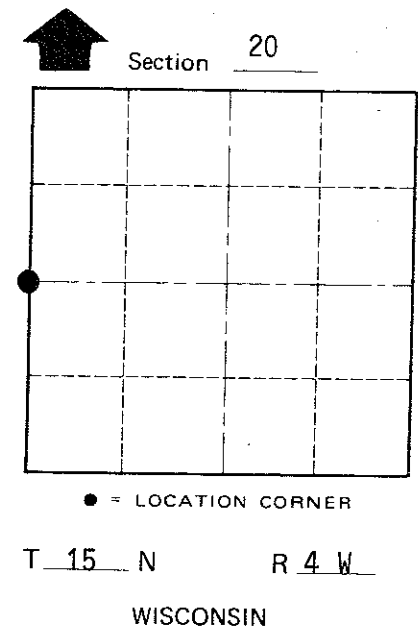
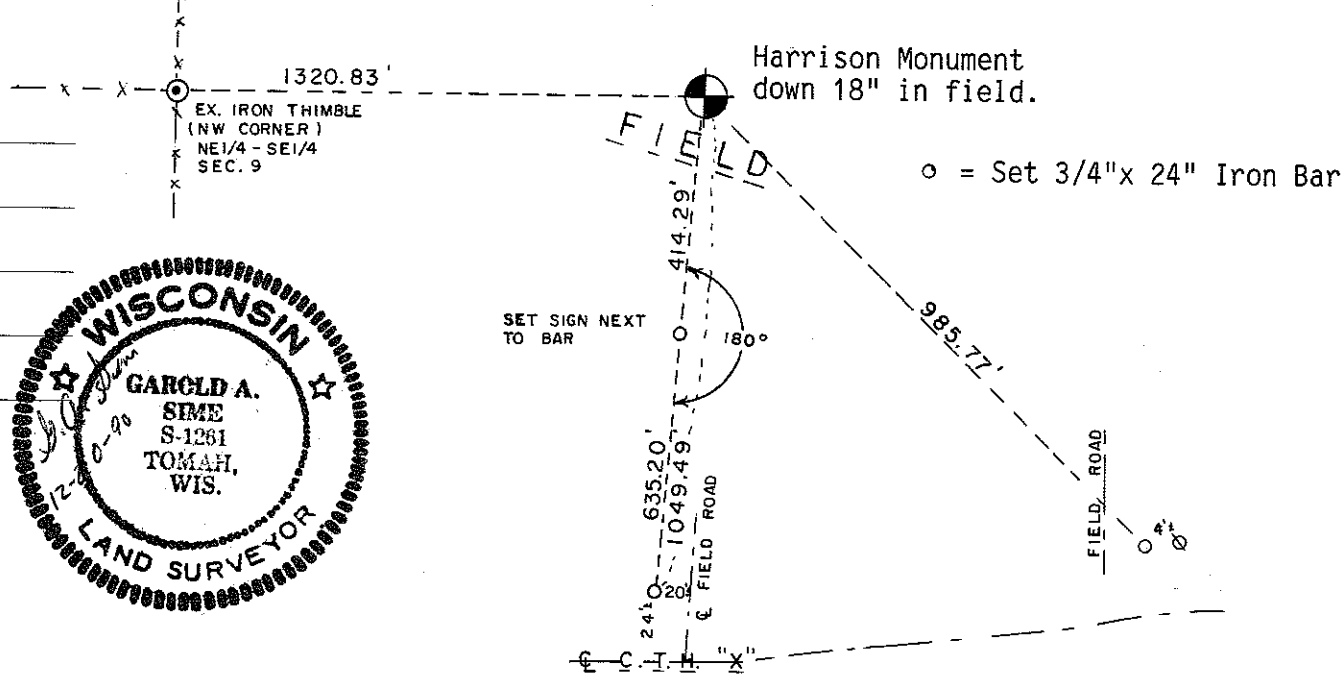
Set Cast Iron Harrison Monument at corner.

Witnesses to corner location:

Garold A. Sime, R.L.S.

John Kenworthy

Gary C. Olson (Land Owner)



SURVEY CONTROL ORDER

Horizontal	_____
Vertical	_____

WISCONSIN COORDINATE SYSTEM

Corner	East (X)	North (Y)	Elevation (Z)	Zone
Control Sta. Name				

City, Village or Town of Portland

County of Monroe