

CERTIFICATE

CERTIFIED LAND CORNER

No. 92

21504190020

I, Gary L. Dechant, do hereby certify that on the 3rd day of May 1998, I found (evidence) (no evidence) of the NW corner of Section 30, T 15 N, R 4 W Fourth Principal Meridian, and I re-established said corner according to the Wisconsin Statutes as shown and described hereon.

Dated this 14th day of May 1998.

Gary L. Dechant

Registered Land Surveyor-1744 Title

History of corner establishment since Original Government Survey

Fred Holden was here in 1905 "reestablished corner on line".

Description of corner evidence found:

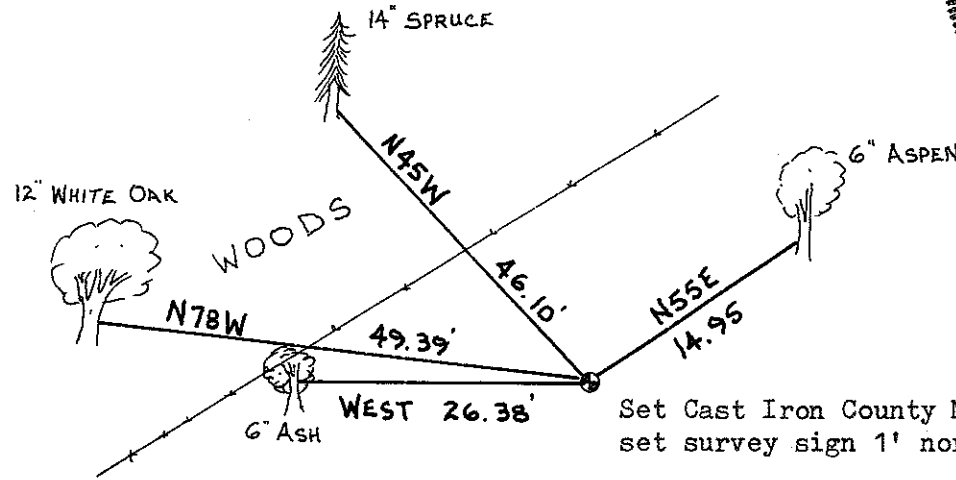
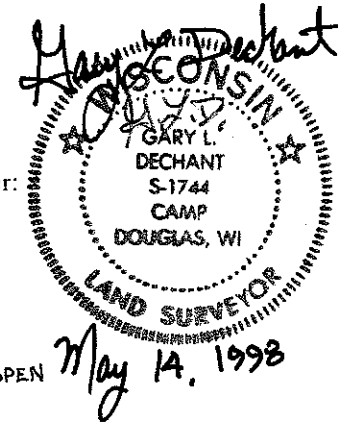
Set corner on line between section corners at prorated distances between NW section corner and occupied NW corner of the NE1/4-NW1/4. Looked for Holden's iron thimble at NW corner of NE1/4-NW1/4 but could not find it.

Description of corner and witness monuments, references and accessories used to perpetuate the original or re-established location of this corner:

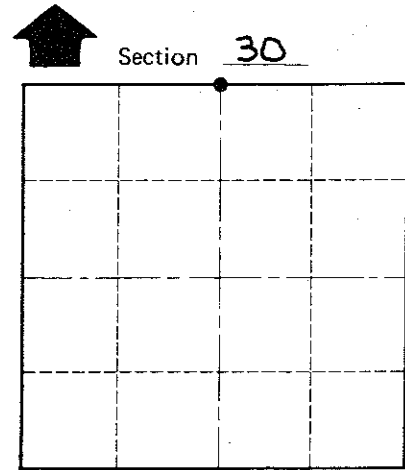
Witnesses to corner location:

David E. Madison

Gary L. Dechant



Set Cast Iron County Monument (TCP) set survey sign 1' north



• = LOCATION CORNER

T 15 N R 4 W

WISCONSIN

PASTURE

SURVEY CONTROL ORDER

Horizontal _____
Vertical _____

WISCONSIN COORDINATE SYSTEM

Corner	East (X)	North (Y)	Elevation (Z)	Zone
Control Sta. Name				

City, Village or Town PORTLAND

County of MONROE

COUNTY SURVEYOR FORM NO. 1