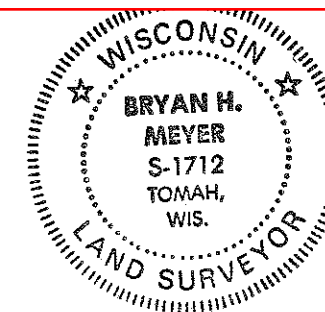


21504182000



H. A. Sime and Associates
P. O. Box 705
Tomah, Wisconsin 54660
Phone: (608)-372-5392

I, Bryan H. Meyer, do hereby certify that on the 21st day of May, 19 90, I found (evidence) ~~no evidence~~ of the West 1/4 corner of Section 17, T 15 N, R 4 W Fourth Principal Meridian, and I re-established said corner according to the Wisconsin Statutes as shown and described hereon.

Dated this 17th day of Dec., 19 90.

Bryan H. Meyer
Deputy County Surveyor
Title

History of corner establishment since Original Government Survey

Richard D. Walter was here in June of 1978, and set an iron pipe at this corner.

Description of corner evidence found:

Found a 1 1/2" iron pipe at the occupied fence corner. I accepted the pipe as the corner.

COUNTY SURVEYOR FORM NO. 1

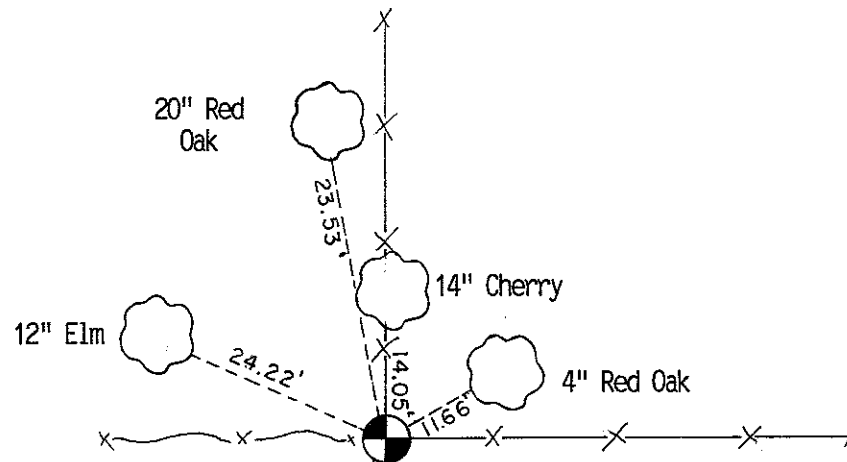
Description of corner and witness monuments, references and accessories used to perpetuate the original or re-established location of this corner:

Crew: John Kenworthy, Brian Forsythe
Date: May 21, 1990

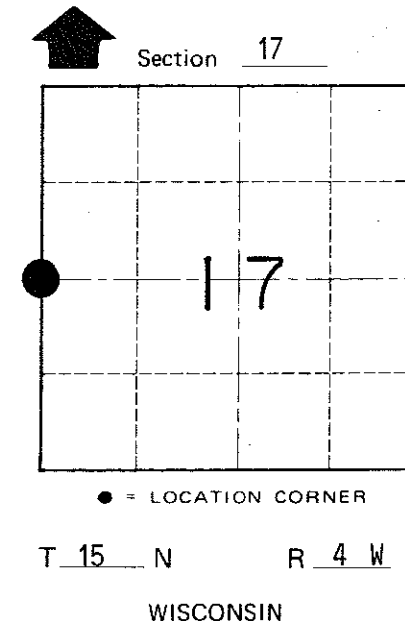
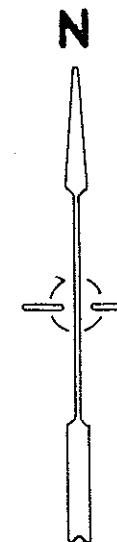
Witnesses to corner location:

Brian Forsythe

John Kenworthy



NOTE: The four trees shown are double blazed; the distance shown to each is to a nail set in a hack in the side of each tree.
Replaced 1 1/2" iron pipe with cast iron Harrison marker. Set sign and post on North side of Harrison.



SURVEY CONTROL ORDER

Horizontal	_____
Vertical	_____

WISCONSIN COORDINATE SYSTEM

Corner	East (X)	North (Y)	Elevation (Z)	Zone
Control Sta. Name				

~~City/Village~~ Town of Portland
County of Monroe