

CERTIFICATE

CERTIFIED LAND CORNER

I, Bryan H. Meyer, do hereby certify that on the 20th day of March, I found (evidence) (~~XXXXXX~~) of the North 1/4 corner of Section 19, T 15 N, R 4 W Fourth Principal Meridian, and I re-established said corner according to the Wisconsin Statutes as shown and described hereon.

Dated this 3rd day of February 2005.

Bryan H. Meyer
 Registered Land Surveyor
Title

History of corner establishment since Original Government Survey

Monroe County Surveyor Fred A. Holden was here in April of 1905.

Description of corner evidence found:

I re-established this corner on line between to the Northeast and Northwest corners of Section 19 and in an existing North-South fenceline.

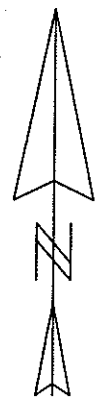
Description of corner and witness monuments, references and accessories used to perpetuate the original or re-established location of this corner:

Crew: B. Meyer, J. Hyland
 Date: March 20, 2002 - 12:30 P. M.
 Weather: Sunny, Calm, 35°±
 Witnesses to corner location:

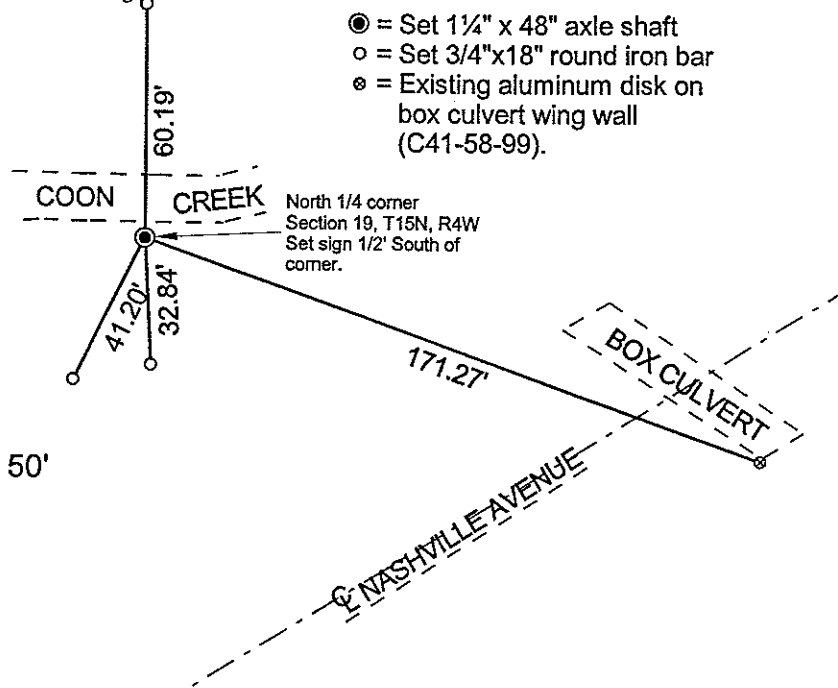
Bryan H. Meyer

John Hyland

COUNTY SURVEYOR FORM NO. 1

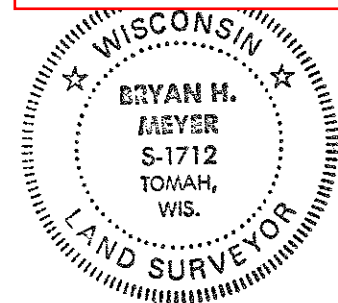


SCALE: 1" = 50'

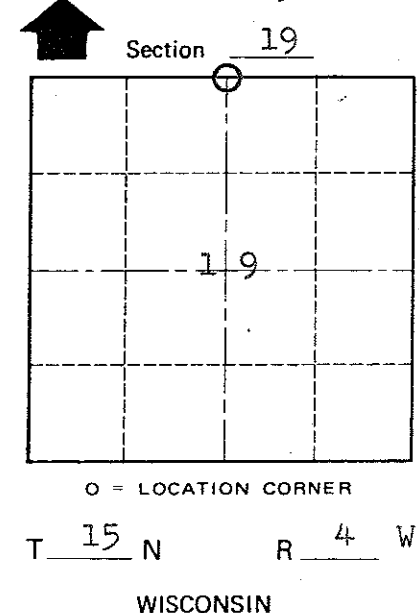


No. 72

21504180020



Bryan H. Meyer
 H. A. Sime and Associates
 P. O. Box 50
 Tomah, Wisconsin 54660
 Phone: 608-372-5392
 File Number 4541



SURVEY CONTROL ORDER

Horizontal	_____
Vertical	_____

WISCONSIN COORDINATE SYSTEM

Corner	East (X)	North (Y)	Elevation (Z)	Zone
Control Sta. Name				

City, Village or Town of Portland
 County of Monroe