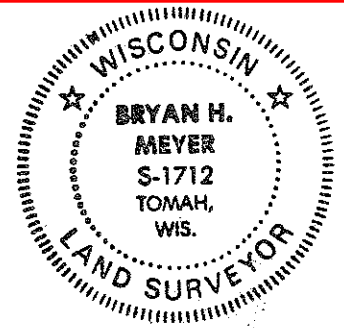


CERTIFICATE

CERTIFIED LAND CORNER

No. 56

21504172000



H. A. Sime and Associates  
P. O. Box 705, Tomah, WI  
Phone: (608)-372-5392

I, Bryan H. Meyer, do hereby certify that on the 12th day of December 19 89, I found (evidence) ~~no evidence~~ of the West 1/4 corner of Section 16, T 15 N, R 4 W Fourth Principal Meridian, and I re-established said corner according to the Wisconsin Statutes as shown and described hereon.

Dated this 15th day of Dec. 19 89.

*Bryan H. Meyer*

Deputy County Surveyor

History of corner establishment since Original Government Survey

Duke Marten was here in August of 1972 and set a 3/4" x 24" iron bar at the corner.

Description of corner evidence found:

I found Mr. Marten's iron bar and accepted it as the corner as it fits the occupied corner (fence corner).

COUNTY SURVEYOR FORM NO. 1

Description of corner and witness monuments, references and accessories used to perpetuate the original or re-established location of this corner:

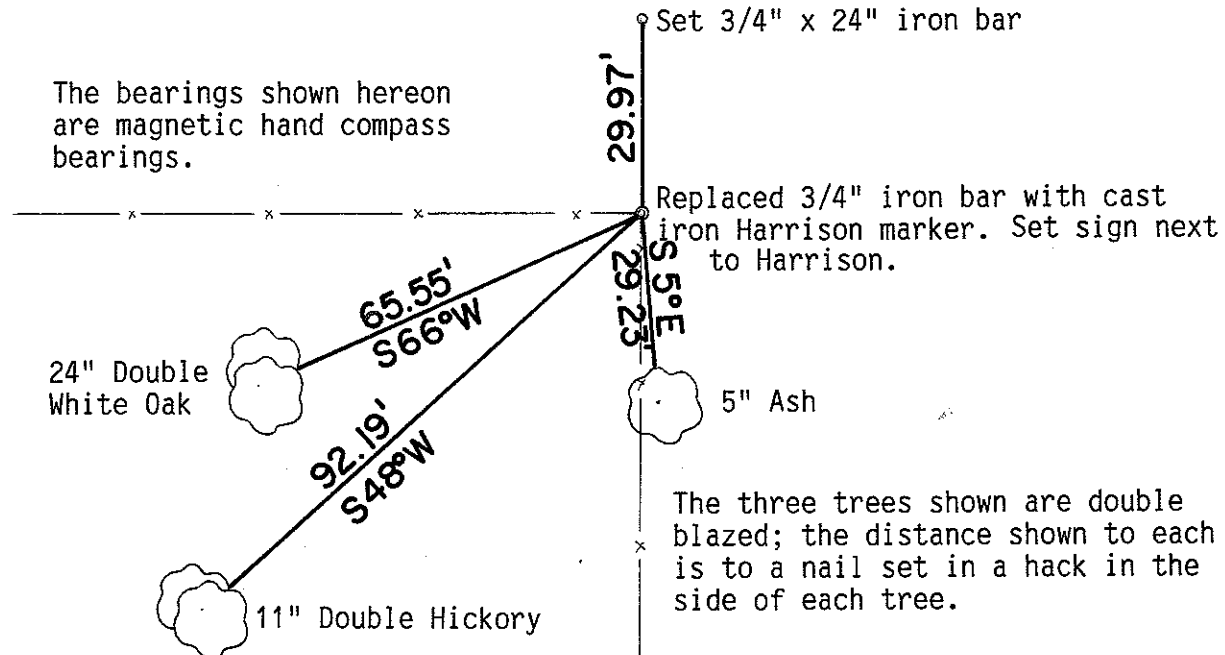
Crew: Kenworthy, Forsythe  
Date: December 12, 1989

Witnesses to corner location:

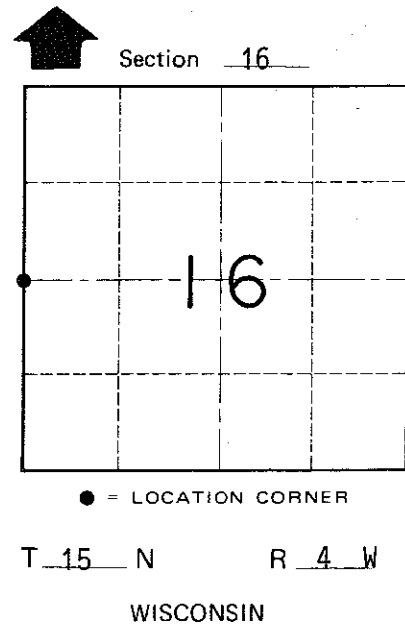
John Kenworthy

Brian Forsythe

The bearings shown hereon are magnetic hand compass bearings.



The three trees shown are double blazed; the distance shown to each is to a nail set in a hack in the side of each tree.



SURVEY CONTROL ORDER

Horizontal \_\_\_\_\_  
Vertical \_\_\_\_\_

Corner	East (X)	North (Y)	Elevation (Z)	Zone
Control Sta. Name				

~~City, Village or Town~~ of Portland

County of Monroe